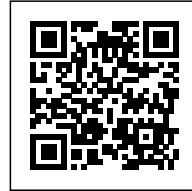




MUSEUM BERGGRUEN

Posted on May 31, 2017 by content



Categories: [expanding design practices](#), [Kuehn Malvezzi](#), [Kuehn Malvezzi](#), [Middle Density](#), [Project](#), [Technology and fabrication](#)

Tags: [Architect's role](#), [Architecture&art](#), [Art](#), [Berlin](#), [Context](#), [Cultural agitator](#), [Culture](#), [Curatorial](#), [Exhibition](#), [Extension](#), [Germany](#), [Interior design](#), [Interiors](#), [Museology](#), [Museum](#), [Outdoor space](#), [Project](#)

urbanNext Lexicon

Museum Berggruen

<https://urbannext.net/museum-berggruen/>

Kuehn Malvezzi realized the extension and interior fittings of the Museum Berggruen in the museum district of Charlottenburg, Berlin. A new glass pergola connects the Stülerbau-West with the neighbouring Kommandantenhaus, making the new sculpture garden into the center of the ensemble. A distinguished architecture of thresholds and relationships between existing buildings has become the instrument for a complete reorientation of the museum by incorporating the outdoor into the architectural composition.



ISSN : 2575-5374

urbanNext Lexicon

Museum Berggruen
<https://urbannext.net/museum-berggruen/>



ISSN : 2575-5374

urbanNext Lexicon

Museum Berggruen

<https://urbannext.net/museum-berggruen/>



The new building is situated along the historic gate and interprets elements borrowed from traditional garden design; a colonnade, open on all sides, functions as a belvedere, providing a view of the Schloss Charlottenburg on the opposite side and the sculpture garden patio, which is framed by high trees. The transparent steel construction sets itself apart from the historic façades of the two adjoining buildings and thus emphasizes their character as solitaires.

ISSN : 2575-5374

urbanNext Lexicon

Museum Berggruen

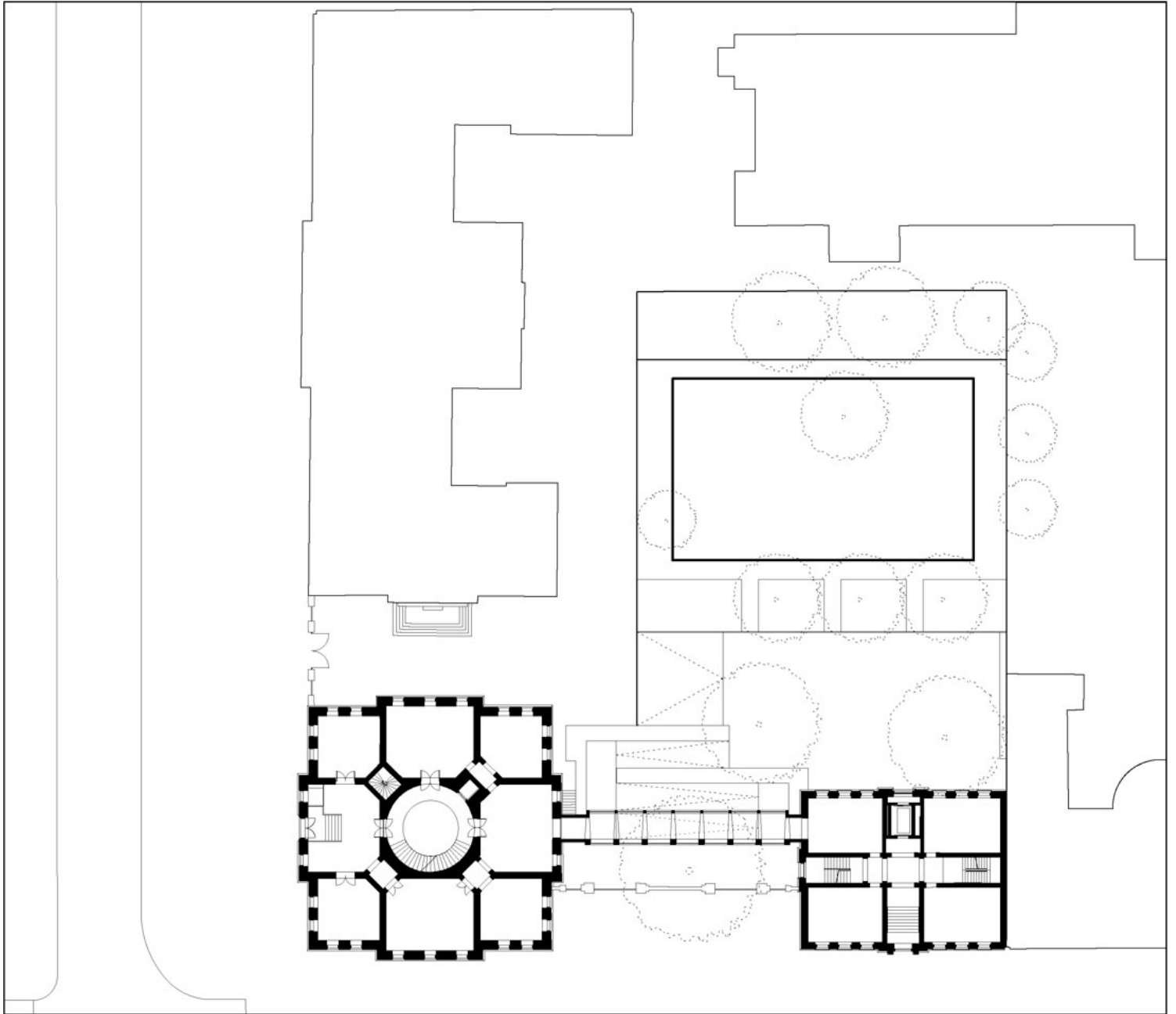
<https://urbannext.net/museum-berggruen/>



ISSN : 2575-5374

urbanNext Lexicon

Museum Berggruen
<https://urbannext.net/museum-berggruen/>



Plan

ISSN : 2575-5374

urbanNext Lexicon

Museum Berggruen

<https://urbannext.net/museum-berggruen/>



The alleyway links the collection exhibition in both houses and makes the garden accessible via a hedge-lined path. From the central rotunda of the Stülerbau the view is directed along the pergola towards the beginning of the exhibition at the Kommandantenhaus, embedding the outside into the exhibition route.

A foyer with visitors' services was added in the Stülerbau-West. The extension attaches three floors to the Museum Berggruen. The constructions include climate-control technology, safety engineering, delivery areas and a lift.

ISSN : 2575-5374

urbanNext Lexicon

Museum Berggruen
<https://urbannext.net/museum-berggruen/>



ISSN : 2575-5374

urbanNext Lexicon

Museum Berggruen
<https://urbannext.net/museum-berggruen/>



ISSN : 2575-5374

urbanNext Lexicon

Museum Berggruen
<https://urbannext.net/museum-berggruen/>

ISSN : 2575-5374