

M6B2 TOWER OF BIODIVERSITY

Posted on September 5, 2017 by urbanNext



Categories: [Energy and sustainability](#), [High Density](#), [Maison Edouard Francois](#), [Project](#), [Urban Paradigms](#)

Tags: [Active Building](#), [Affordable Housing](#), [Aluminum skin](#), [Building](#), [Collective housing](#), [Community Facilities](#), [Eco Building](#), [Ecological activation](#), [Ecological agencies](#), [Ecological researches](#), [Energetic Approach](#), [France](#), [Green roofs](#), [Paris](#), [Project](#), [Retail](#), [Second skin](#), [Urban conditions](#), [Urban Health](#), [Urban Paradigms](#), [Vegetation](#), [Vertical greenery](#)

urbanNext Lexicon

M6B2 Tower of Biodiversity

<https://urbannext.net/m6b2-tower-biodiversity/>

The relationship between building height and sustainability is a subject that currently occupies the minds of many city planners. This is because the city cannot expand infinitely into the landscape. In France, however, "village" urbanism seems to be adamantly resisting the vertical city, without truly considering its potential. One of the objectives of our project is to quell these hesitations.

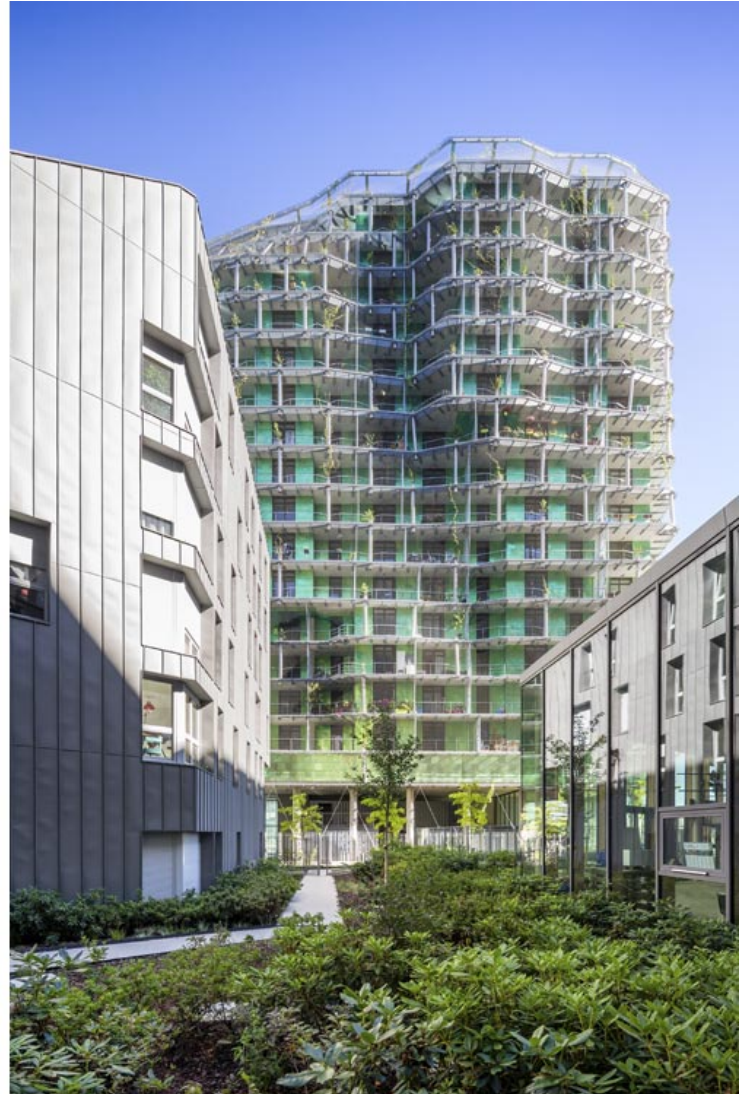


ISSN : 2575-5374

urbanNext Lexicon

M6B2 Tower of Biodiversity

<https://urbannext.net/m6b2-tower-biodiversity/>

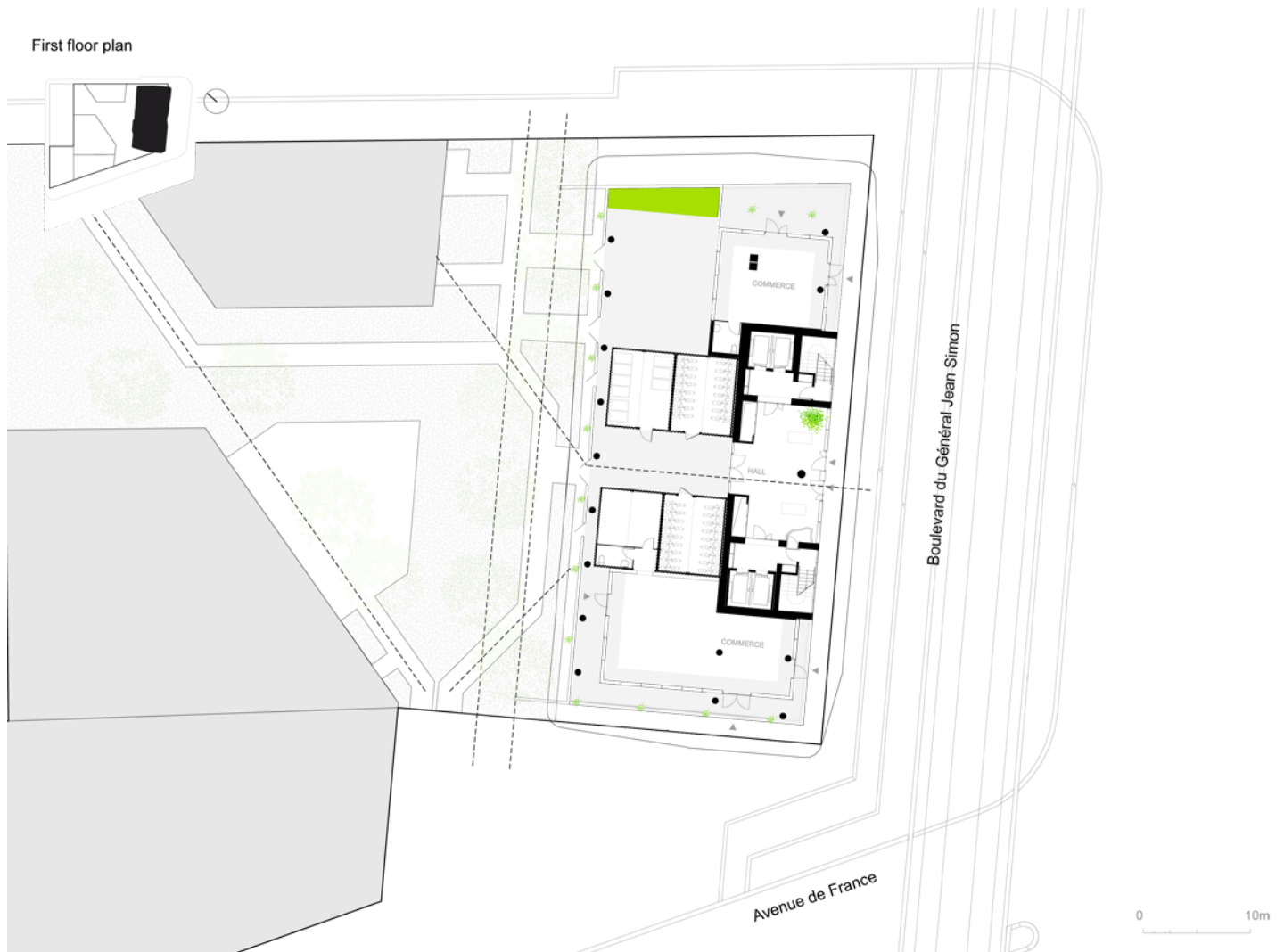


Benefiting from an exception to the 37 meter building height restriction in Paris, the tallest building of our project is 50 meters tall. Covered with plants from wild natural areas, our tower is a tool for seeding: it allows the wind to spread class 1 purebred seeds into the urban environment. Its height is a key element for its capacity to regenerate urban biodiversity. Its titanium cladding generates moiré patterns that give it a subtle, fluctuating character. The tower is thus not only a tool for neighborhood development but also a tool for development on a bigger scale, as it distills a "green" aura into the Parisian cityscape.

ISSN : 2575-5374

urbanNext Lexicon

M6B2 Tower of Biodiversity
<https://urbannext.net/m6b2-tower-biodiversity/>



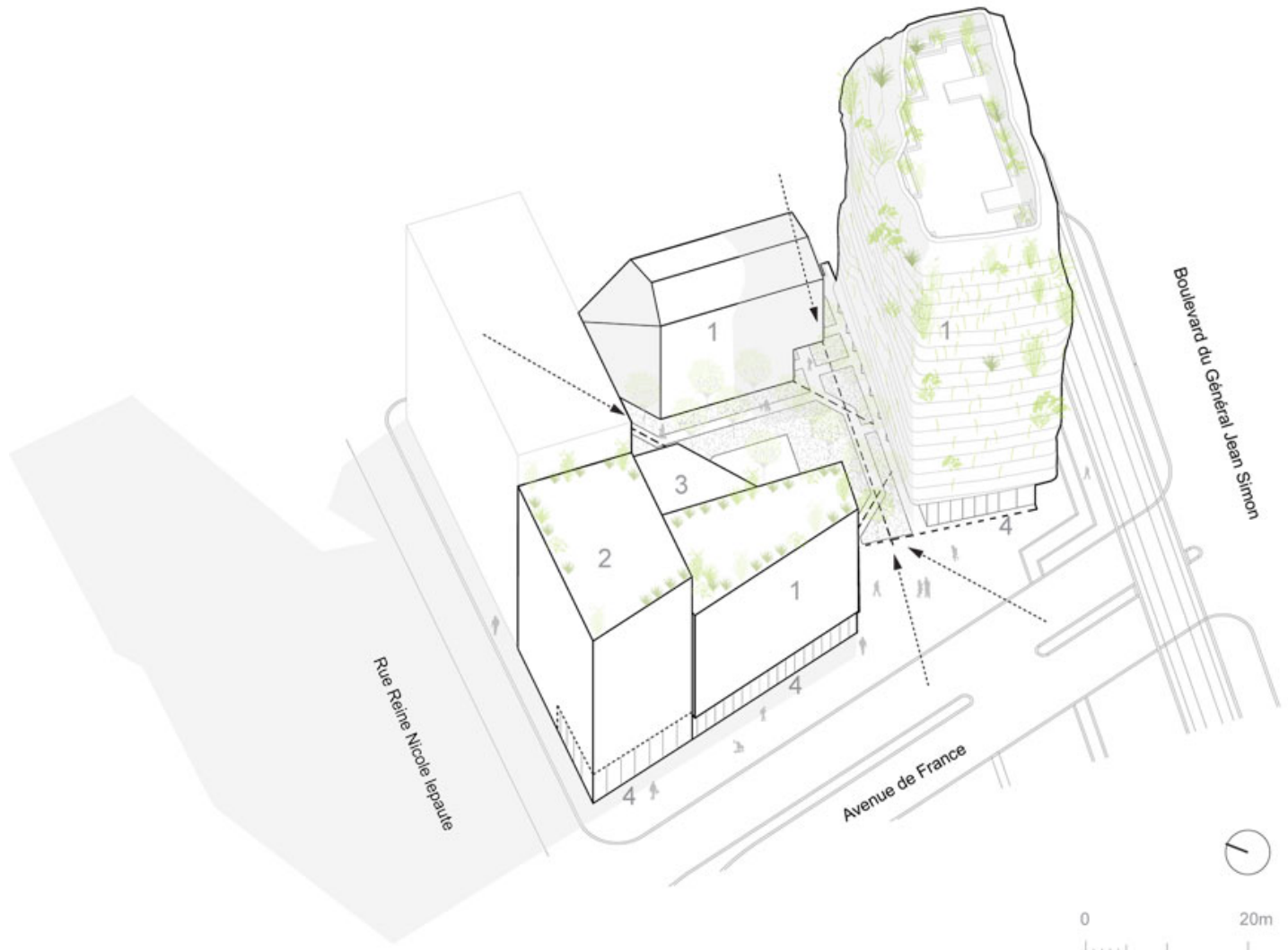
Plans

ISSN : 2575-5374

urbanNext Lexicon

M6B2 Tower of Biodiversity

<https://urbannext.net/m6b2-tower-biodiversity/>

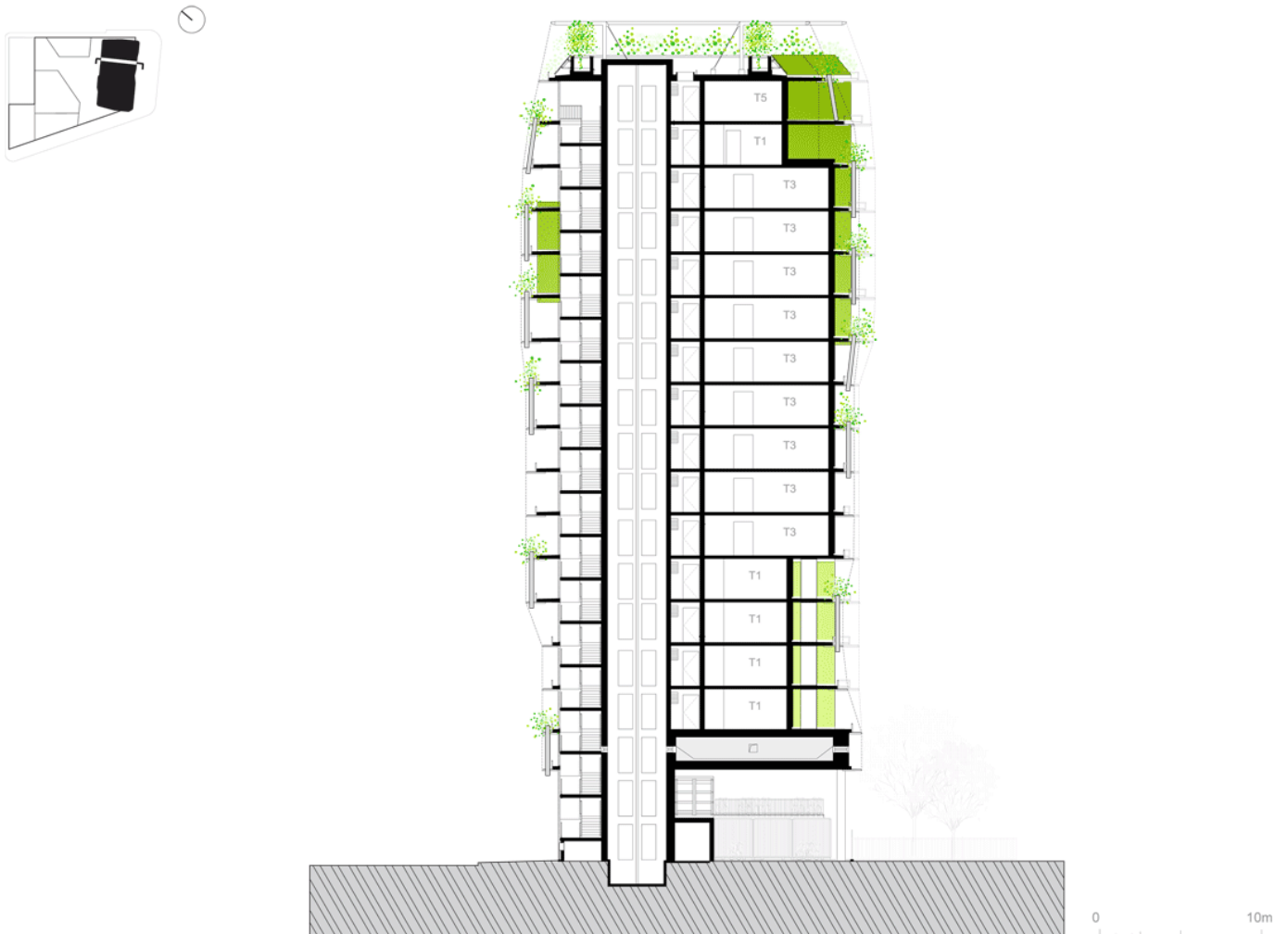


- 1- Housing
- 2- Young workers' hostel
- 3- Crèche
- 4- Shopping area

ISSN : 2575-5374

urbanNext Lexicon

M6B2 Tower of Biodiversity
<https://urbannext.net/m6b2-tower-biodiversity/>

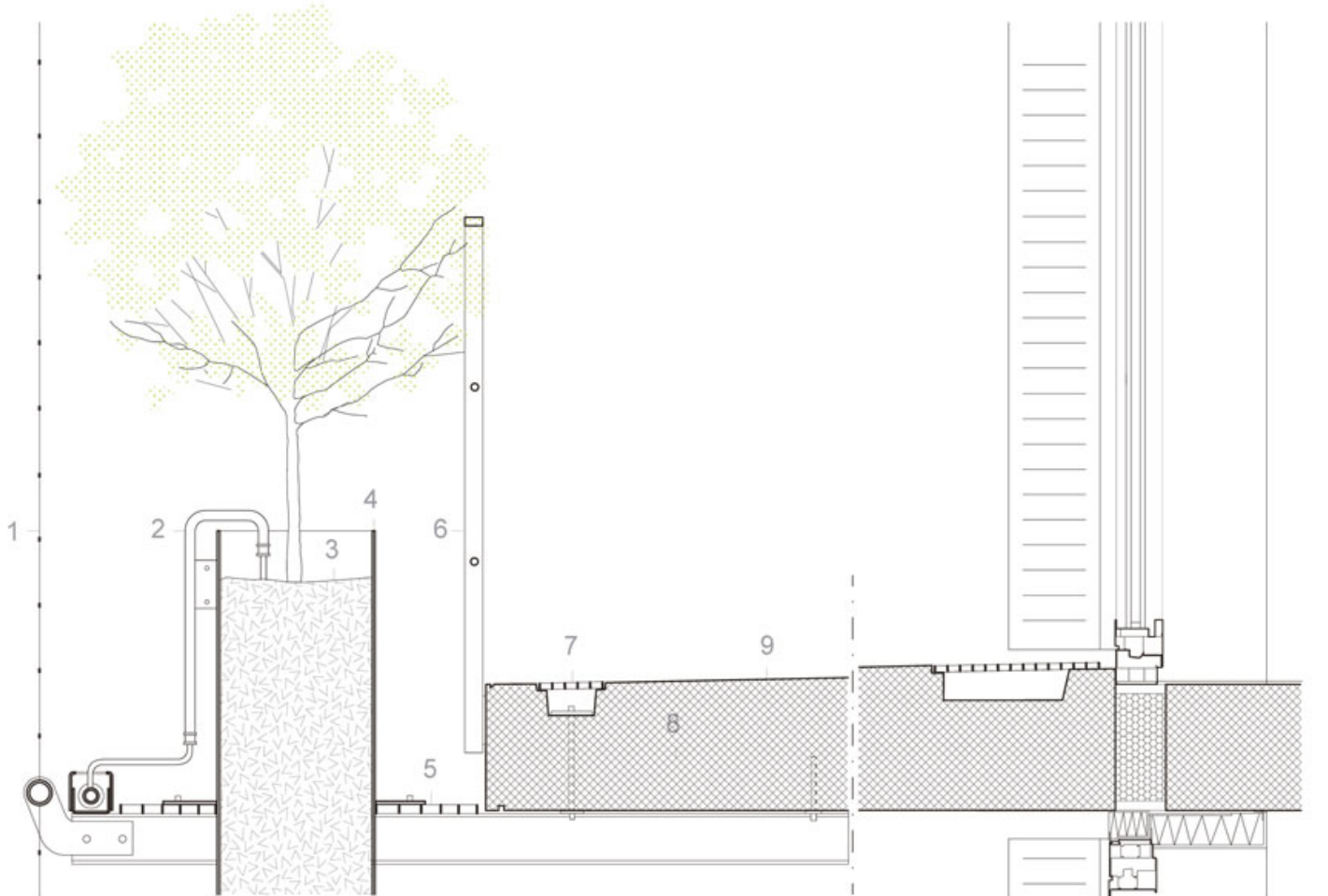


Sections

ISSN : 2575-5374

urbanNext Lexicon

M6B2 Tower of Biodiversity
<https://urbannext.net/m6b2-tower-biodiversity/>



- 1 - Stainless steel net
- 2 - Watering system
- 3 - Soil
- 4 - Stainless steel tube - Green support
- 5 - Maintenance footbridge
- 6 - Separating balustrade
- 7 - Rainwater collection
- 8 - Concrete balcony
- 9 - Impermeability

0 20cm

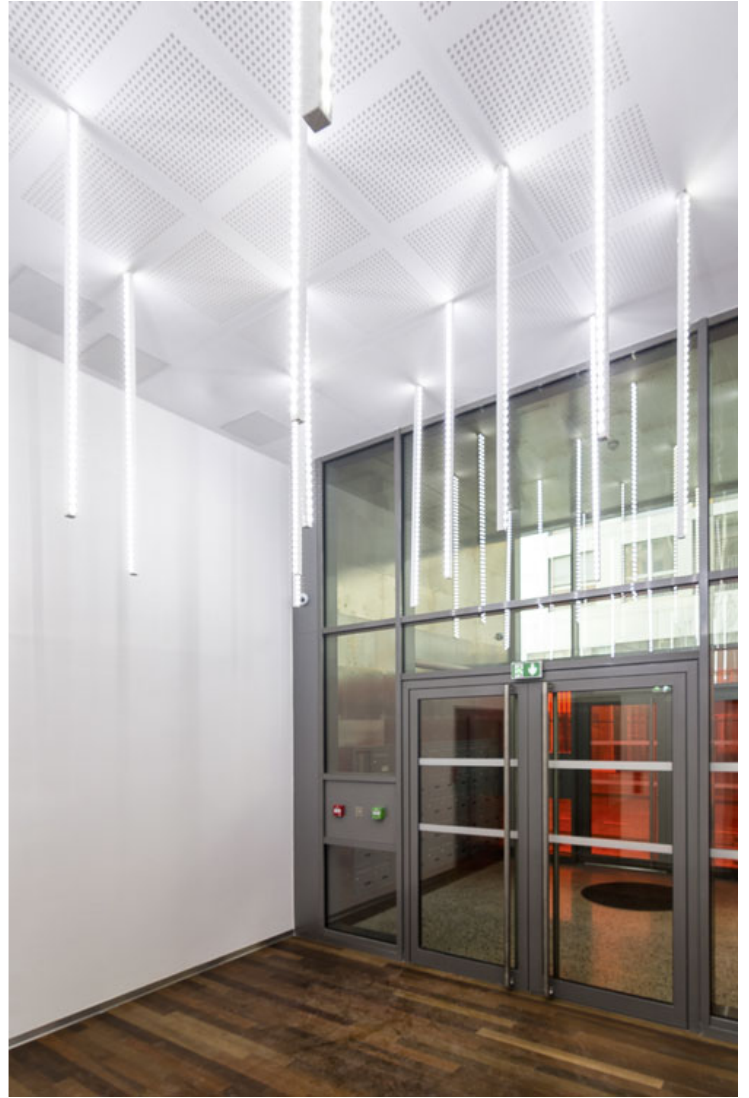
ISSN : 2575-5374

urbanNext Lexicon

M6B2 Tower of Biodiversity
<https://urbannext.net/m6b2-tower-biodiversity/>

Detail

The landscaping strategy unfolds in three stages: first with rapidly climbing vines; later with conifer trees that develop in five to ten years; and lastly with slow-growth trees like oaks that develop in twenty years or more.



ISSN : 2575-5374

urbanNext Lexicon

M6B2 Tower of Biodiversity
<https://urbannext.net/m6b2-tower-biodiversity/>

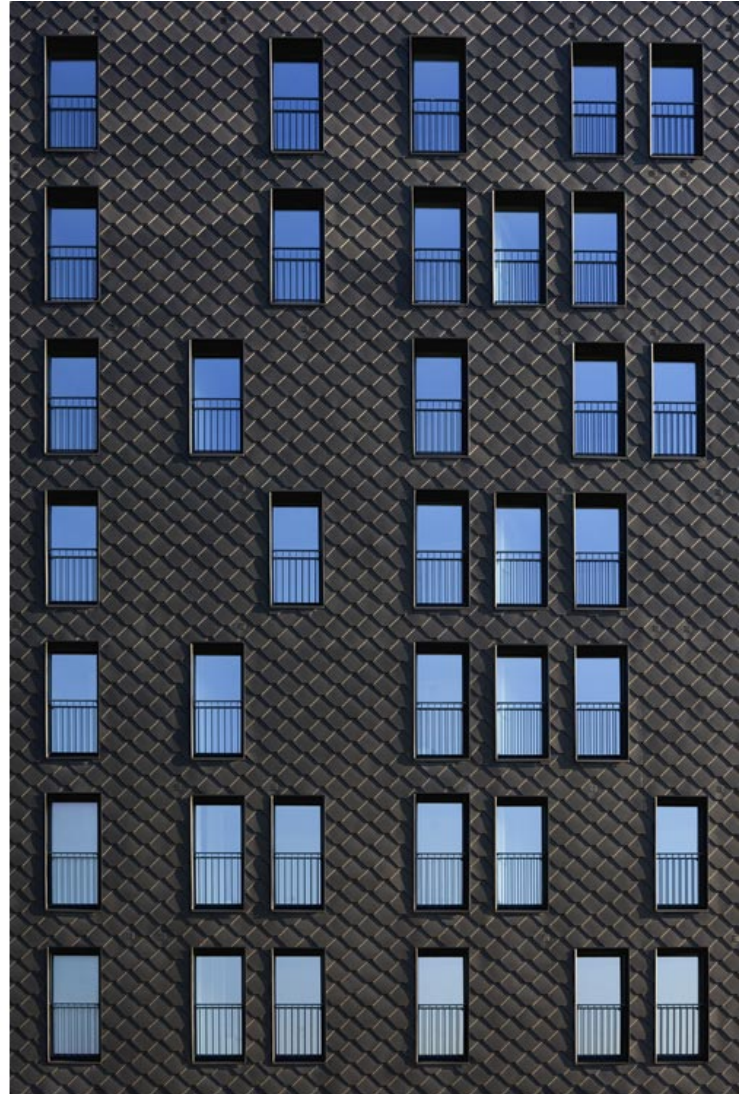
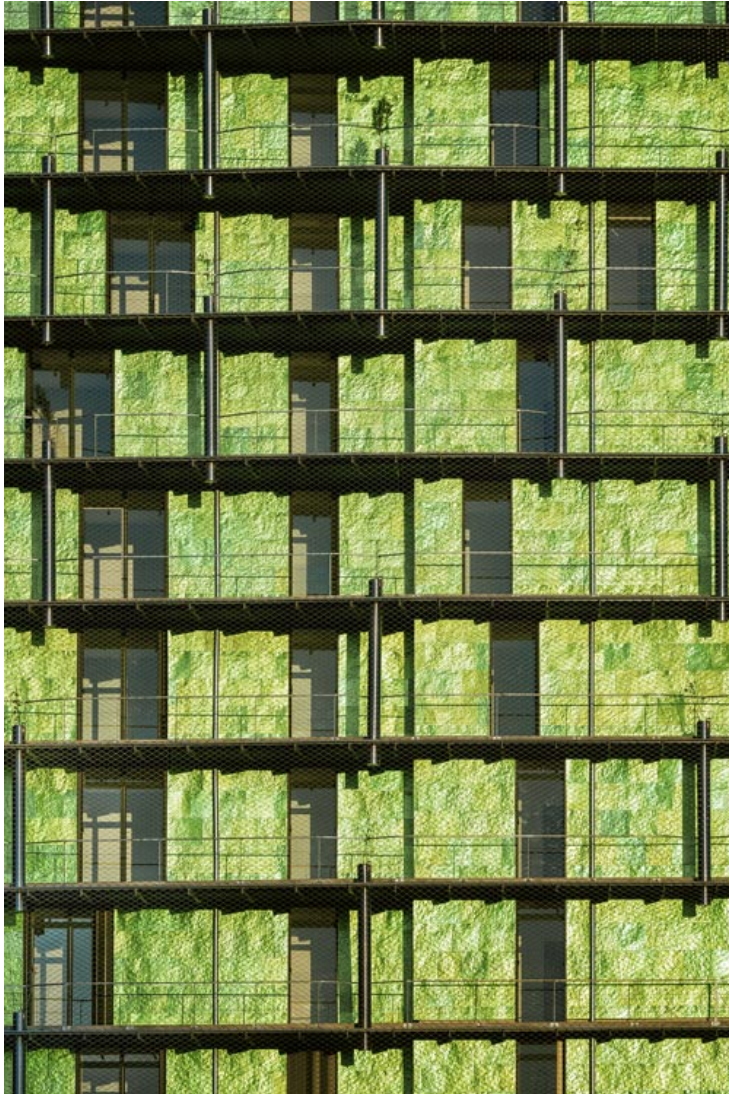


ISSN : 2575-5374

urbanNext Lexicon

M6B2 Tower of Biodiversity

<https://urbannext.net/m6b2-tower-biodiversity/>

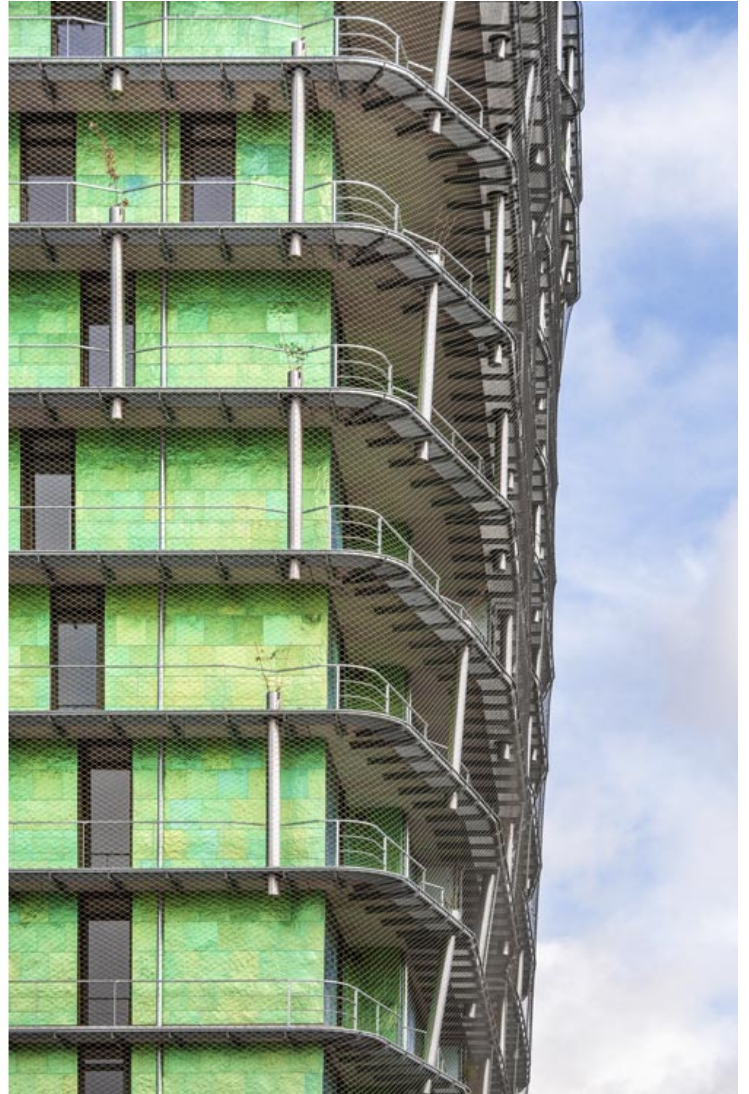


The green façade of the tower extends over the center of the block to the surrounding buildings. These smaller buildings are simpler, with metal facades in zinc and aluminum. They are placed at the corners of the block, allowing for pedestrians to stroll through a calm, protected garden filled with low vegetation, as if outside of the city.

ISSN : 2575-5374

urbanNext Lexicon

M6B2 Tower of Biodiversity
<https://urbannext.net/m6b2-tower-biodiversity/>

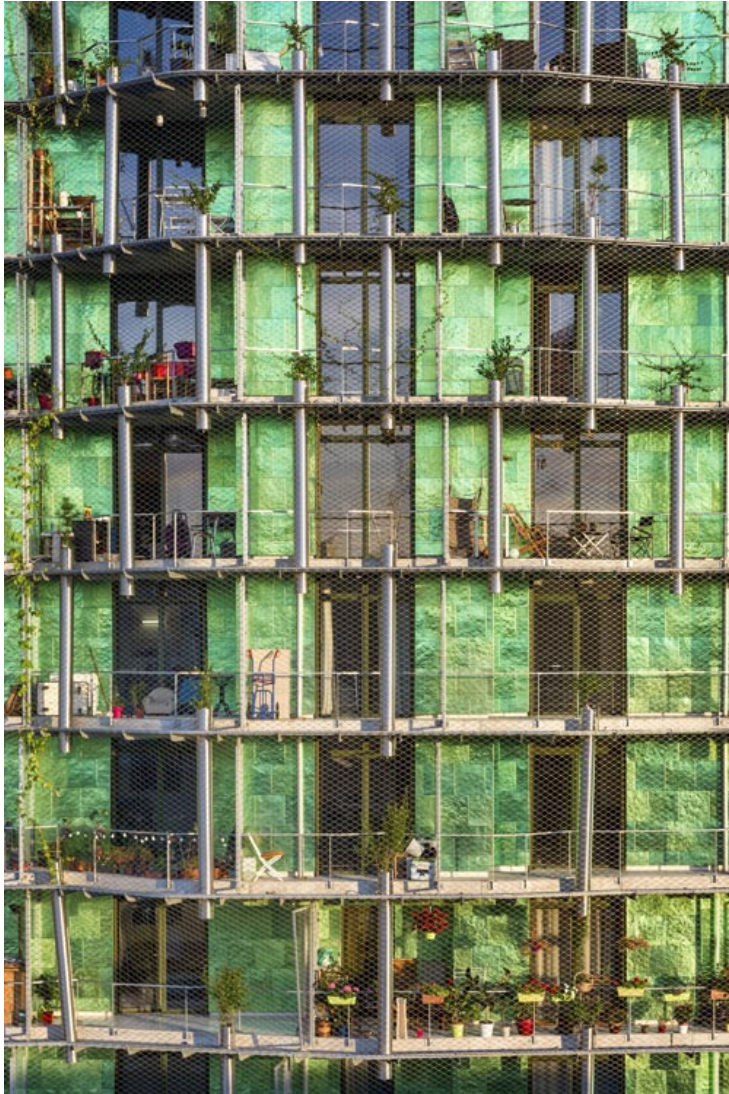


ISSN : 2575-5374

urbanNext Lexicon

M6B2 Tower of Biodiversity

<https://urbannext.net/m6b2-tower-biodiversity/>



ISSN : 2575-5374

