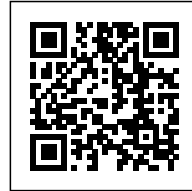




LYCÉE SCHORGE: A SOURCE OF INSPIRATION

Posted on November 27, 2018 by martabuges



Categories: [Energy and sustainability](#), [expanding design practices](#), [Kéré Architecture](#), [Low Density](#), [Project](#)

Tags: [Africa](#), [Bricks](#), [Burkina Faso](#), [Community](#), [Courtyard](#), [Creativity](#), [Design](#), [Design strategies](#), [Educational](#), [Humanitarian Practices](#), [Innovation](#), [Inspiration](#), [Landscape](#), [Local materials](#), [Privacy](#), [Project](#), [School](#), [Solar Energy](#), [Ventilation](#), [Wooden ceiling](#)

urbanNext Lexicon

Lycée Schorge: A Source of Inspiration
<https://urbannext.net/lycee-schorge/>

Located in the third most populated city in Burkina Faso, the Lycée Schorge Secondary School not only sets a new standard for educational excellence in the region, it also provides a source of inspiration by showcasing locally sourced building materials in an innovative and modern way.

ISSN : 2575-5374

urbanNext Lexicon

Lycée Schorge: A Source of Inspiration
<https://urbannext.net/lycee-schorge/>

ISSN : 2575-5374

urbanNext Lexicon

Lycée Schorge: A Source of Inspiration
<https://urbannext.net/lycee-schorge/>



Photo: Iwan Baan

The design for the school consists of nine modules which accommodate a series of classrooms and administration rooms. One of these modules also houses a dental clinic, which provides a new source of dental care for the students.

ISSN : 2575-5374

urbanNext Lexicon

Lycée Schorge: A Source of Inspiration
<https://urbannext.net/lycee-schorge/>

ISSN : 2575-5374

urbanNext Lexicon

Lycée Schorge: A Source of Inspiration
<https://urbannext.net/lycee-schorge/>



ISSN : 2575-5374

urbanNext Lexicon

Lycée Schorge: A Source of Inspiration
<https://urbannext.net/lycee-schorge/>

ISSN : 2575-5374

urbanNext Lexicon

Lycée Schorge: A Source of Inspiration
<https://urbannext.net/lycee-schorge/>



Photo: Iwan Baan

The walls of these modules are made from locally harvested laterite stone, which, when first extracted from the earth, can be easily cut and shaped into bricks. When the stone is left exposed to the atmosphere above ground, it begins to harden. The material functions really well as a wall system for the classrooms because of its thermal mass capabilities. In combination with the unique wind-catching towers and overhanging roofs, this lowers the temperature of the interior spaces exponentially.

ISSN : 2575-5374

urbanNext Lexicon

Lycée Schorge: A Source of Inspiration
<https://urbannext.net/lycee-schorge/>



ISSN : 2575-5374

urbanNext Lexicon

Lycée Schorge: A Source of Inspiration
<https://urbannext.net/lycee-schorge/>



Another major factor that helps naturally ventilate and illuminate the interiors is a massive undulating ceiling. The wave-like pattern of plaster and concrete components are slightly offset from each other, allowing the interior space to breathe and expel hot stagnant air. The off-white color of the ceiling serves to diffuse and spread indirect daylight, providing ample illumination during the day while keeping the interior learning space protected from direct solar heat gain.

ISSN : 2575-5374

urbanNext Lexicon

Lycée Schorge: A Source of Inspiration
<https://urbannext.net/lycee-schorge/>

ISSN : 2575-5374

urbanNext Lexicon

Lycée Schorge: A Source of Inspiration
<https://urbannext.net/lycee-schorge/>

ISSN : 2575-5374

urbanNext Lexicon

Lycée Schorge: A Source of Inspiration
<https://urbannext.net/lycee-schorge/>



Photo: Iwan Baan

ISSN : 2575-5374



Photo: Iwan Baan

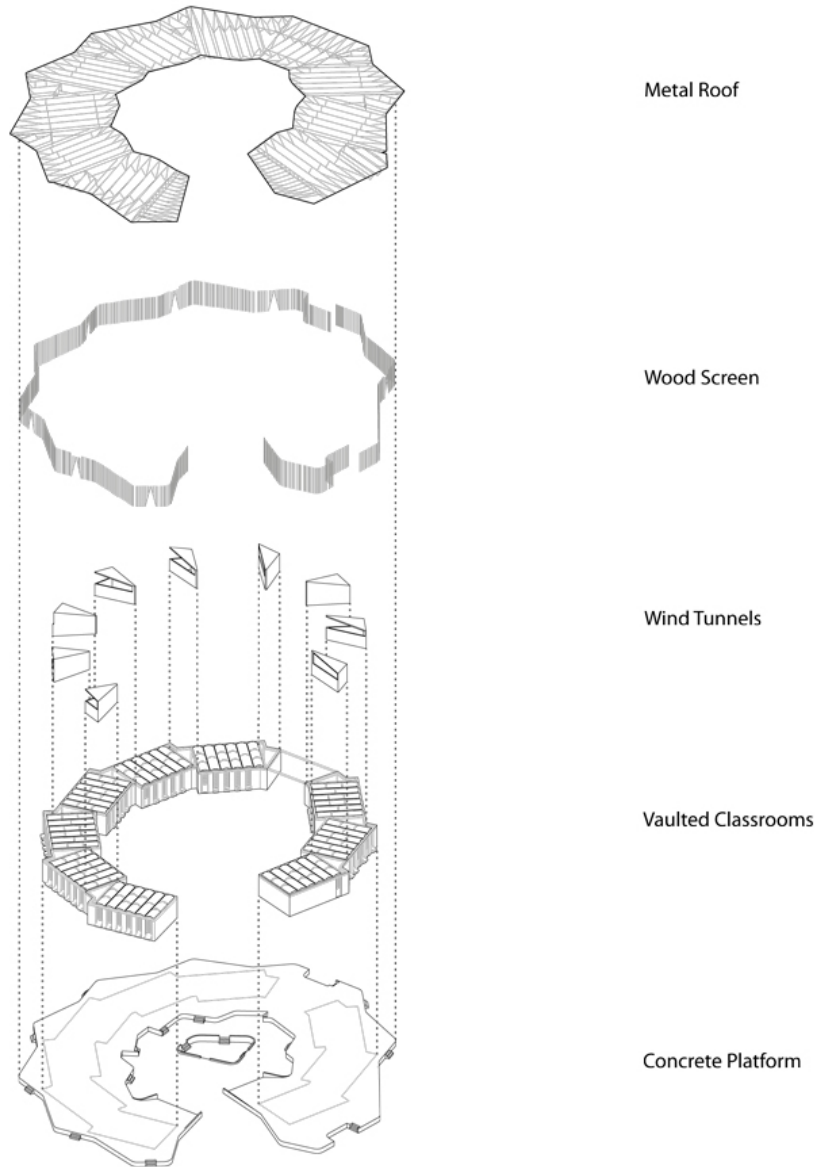
Wrapping around these classrooms like a transparent fabric is a system of wooden screens. This secondary facade is made of eucalyptus wood and acts as a shading element for the spaces immediately surrounding the classrooms. The screens not only protect the earthen classrooms from corroding dust and winds, they also help to create a series of secondary informal gathering spaces for the students as they wait to attend their classes.

In order to minimize the material transported to the site, the school furniture inside the classrooms is made from local hardwoods and leftover elements from the main building construction, such as

urbanNext Lexicon

Lycée Schorge: A Source of Inspiration
<https://urbannext.net/lycee-schorge/>

steel scraps from the roof. This way, the economy of the building is extended by reducing waste, adding additional value to the cost of construction.



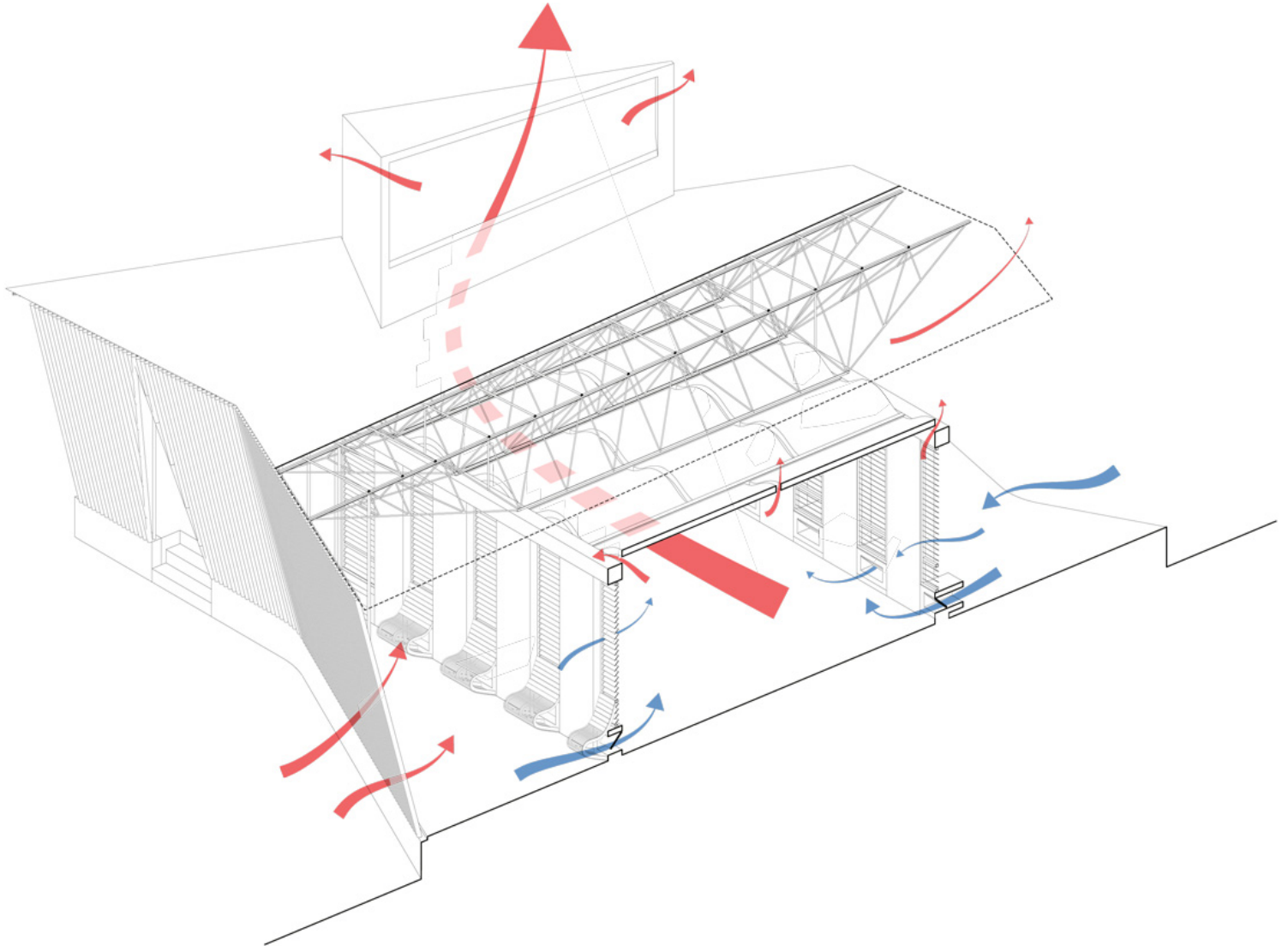
Creating a sort of autonomous “village” condition, the radial layout of the classroom modules is wrapped around a central public courtyard. This configuration not only creates privacy from the main public domain, it also shelters and protects the inner courtyard from wind and dust. An

ISSN : 2575-5374

urbanNext Lexicon

Lycée Schorge: A Source of Inspiration
<https://urbannext.net/lycee-schorge/>

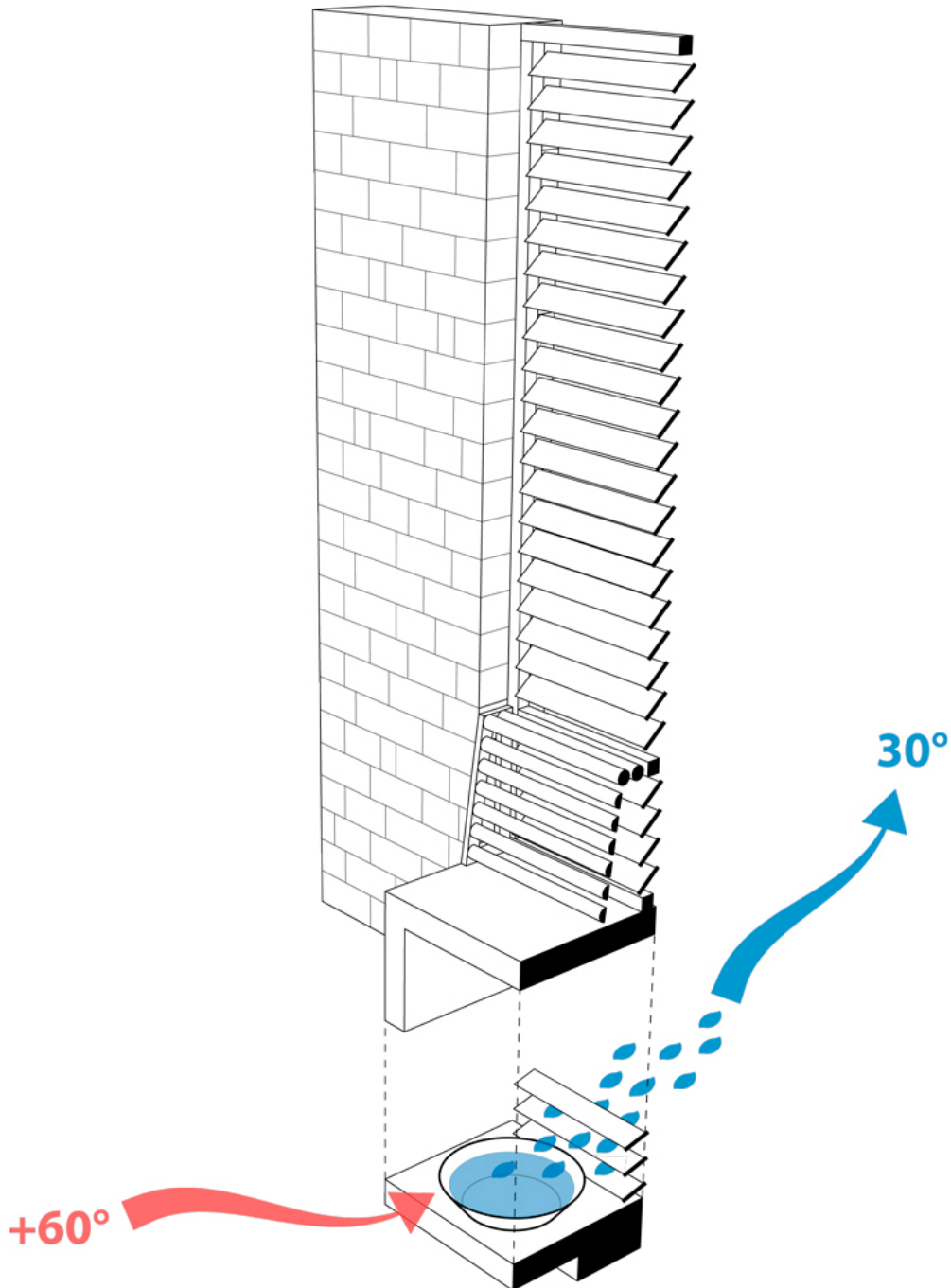
amphitheater-like condition at the center of the courtyard will accommodate informal gatherings, as well as formal assemblies and celebrations for the school and community as a whole.



ISSN : 2575-5374

urbanNext Lexicon

Lycée Schorge: A Source of Inspiration
<https://urbannext.net/lycee-schorge/>



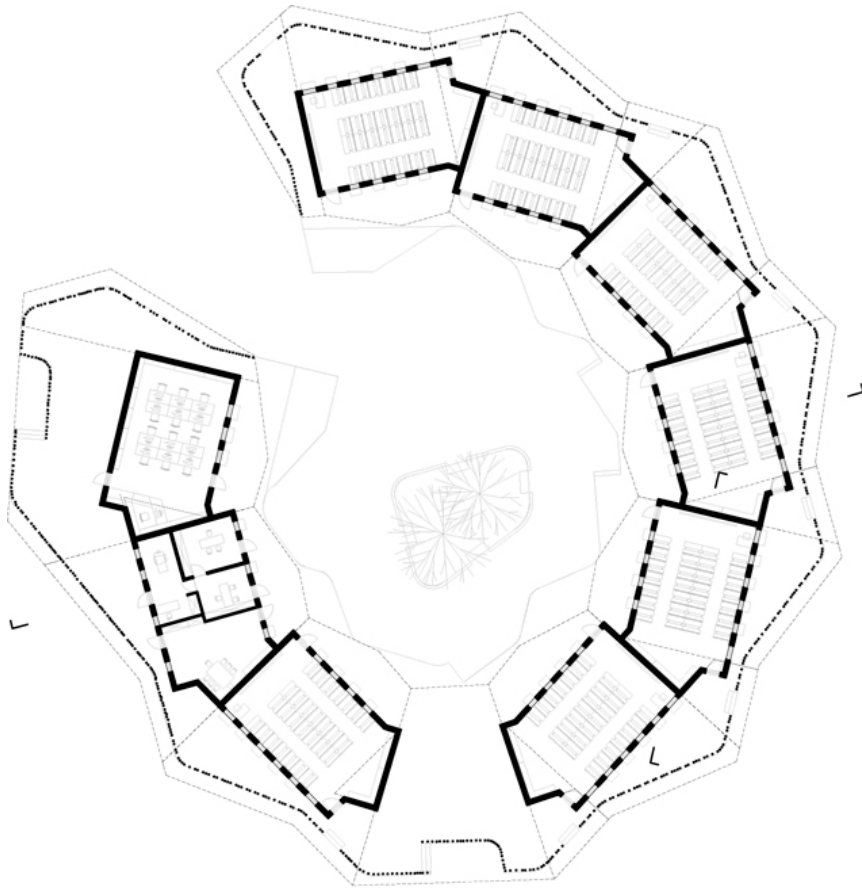
Overall, one of the most important goals of the design is to serve as a catalyst for inspiration for the

ISSN : 2575-5374

urbanNext Lexicon

Lycée Schorge: A Source of Inspiration
<https://urbannext.net/lycee-schorge/>

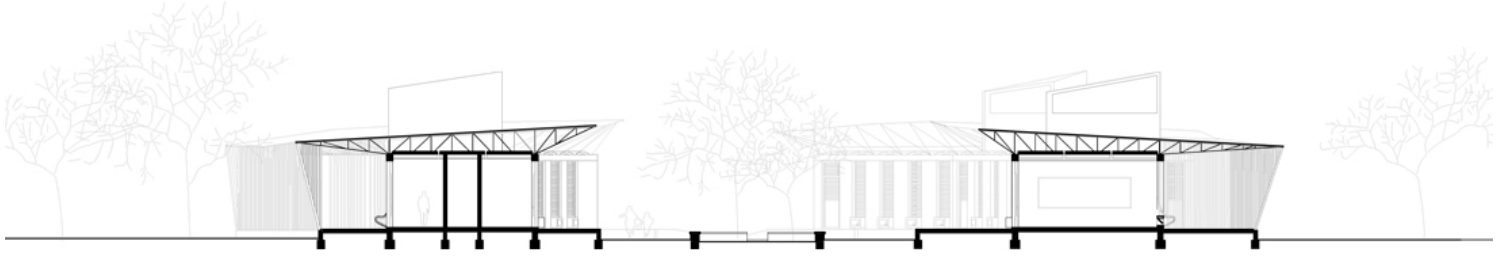
students, teaching staff, and surrounding community members. The architecture not only functions as a marker in the landscape, it is also a testament to how local materials, in combination with creativity and teamwork, can be transformed into something significant with profound lasting effects.



ISSN : 2575-5374

urbanNext Lexicon

Lycée Schorge: A Source of Inspiration
<https://urbannext.net/lycee-schorge/>



0 1 2 5 10

ISSN : 2575-5374

urbanNext Lexicon

Lycée Schorge: A Source of Inspiration
<https://urbannext.net/lycee-schorge/>

ISSN : 2575-5374