



LILJEVALCHS+: PRECISELY TAILORED OPERATION

Posted on October 4, 2022 by xavigonzalez



Categories: [Contributors](#), [Densities](#), [Formats](#), [Middle Density](#), [Project](#), [Territory and mobility](#), [Topics](#), [Wingårdhs](#)

Tags: [Architecture](#), [Concrete](#), [Cultural Facility](#), [Geometry](#), [Natural Lighting](#), [Project](#), [Skylight](#), [Stockholm](#), [Sweden](#), [Transformation](#)

urbanNext Lexicon

Liljevalchs+: Precisely Tailored Operation
<https://urbannext.net/liljevalchs-precisely-tailored-operation/>

The addition to Liljevalchs Konsthall is reserved without covering. Its posture is that of a discreet aide attending to the existing art gallery. A small, precisely tailored operation.



One hundred seventy square meters of glass roof let the whole sky into the building. It's all rather simple: a square filled with molded skylights, two meters wide and two meters high, two straight walls and two leaning. All the way up the building a thin glass membrane separates inside from

ISSN : 2575-5374

urbanNext Lexicon

Liljevalchs+: Precisely Tailored Operation
<https://urbannext.net/liljevalchs-precisely-tailored-operation/>

outside. Below, the light plays exactly the way we want it to.



ISSN : 2575-5374

urbanNext Lexicon

Liljevalchs+: Precisely Tailored Operation
<https://urbannext.net/liljevalchs-precisely-tailored-operation/>



Liljevalchs+ serves as a complement to the old art gallery, which continues to welcome visitors approaching from the main thoroughfare of Djurgårdsvägen, but our building faces Falkenbergsgatan instead. The differentiation between the two buildings is programmatic as well as visual.

ISSN : 2575-5374

urbanNext Lexicon

Liljevalchs+: Precisely Tailored Operation
<https://urbannext.net/liljevalchs-precisely-tailored-operation/>



The original entrance, which is well established as fundamental to Liljevalchs and the experience of its architecture, will retain its primacy. Our addition provides more space for exhibitions, a secondary entrance, a museum shop, and the development of the café.

ISSN : 2575-5374

urbanNext Lexicon

Liljevalchs+: Precisely Tailored Operation
<https://urbannext.net/liljevalchs-precisely-tailored-operation/>



ISSN : 2575-5374

urbanNext Lexicon

Liljevalchs+: Precisely Tailored Operation
<https://urbannext.net/liljevalchs-precisely-tailored-operation/>

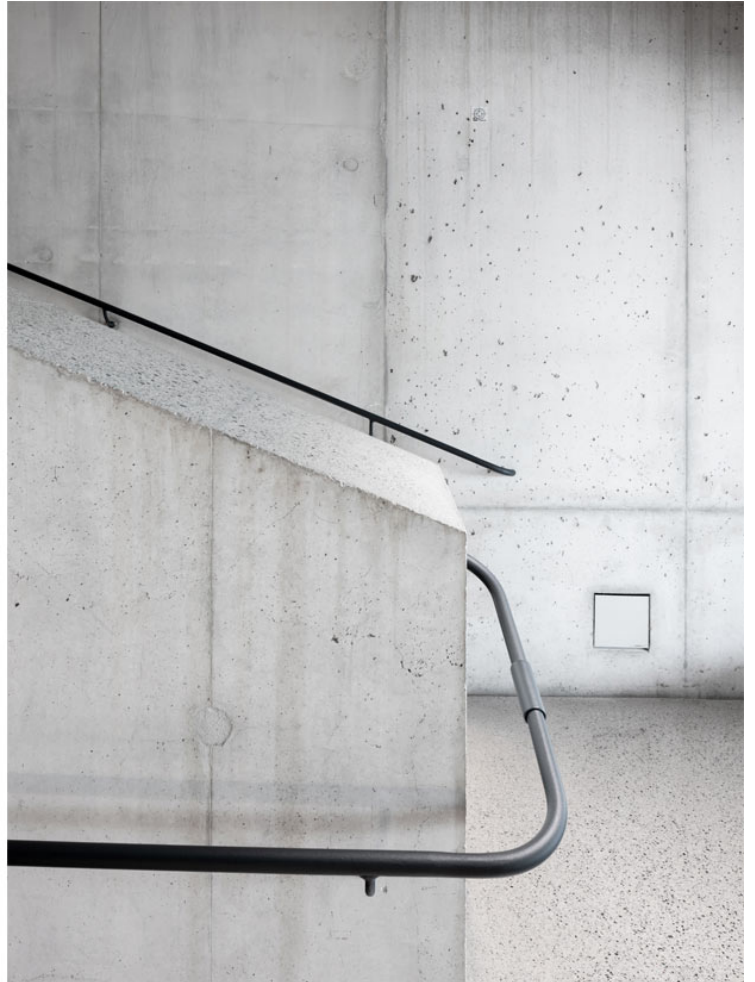


The original building has two levels: a basement with gallery spaces on top. The addition pretends to maintain the same arrangement, but in fact, it is a split-level plan with floors at six different elevations throughout the building.

ISSN : 2575-5374

urbanNext Lexicon

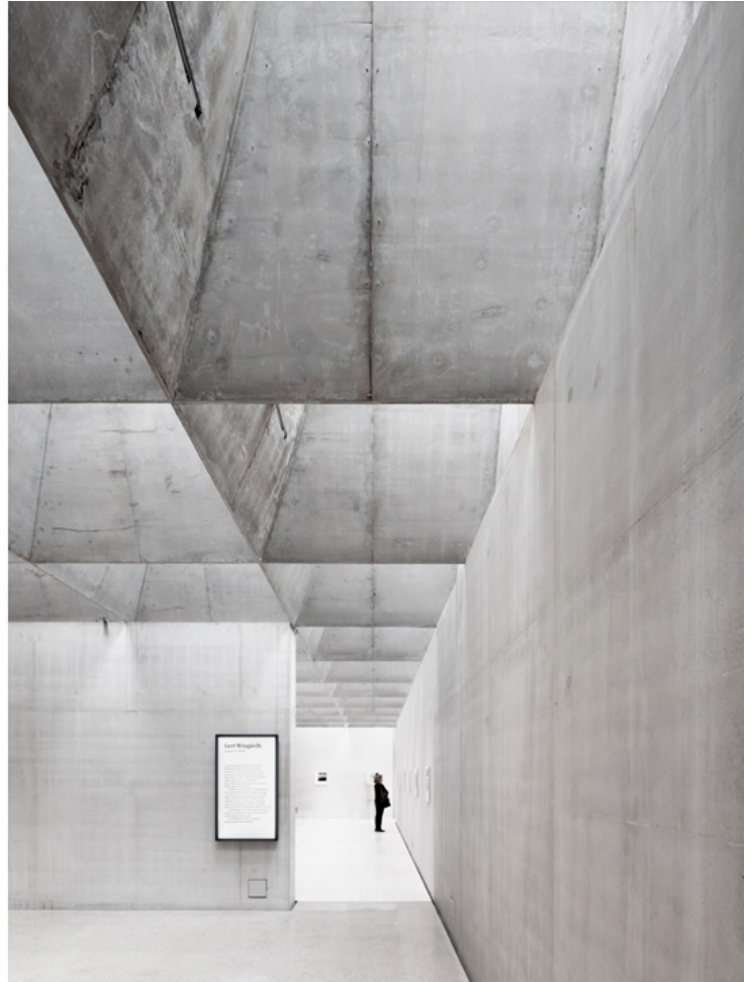
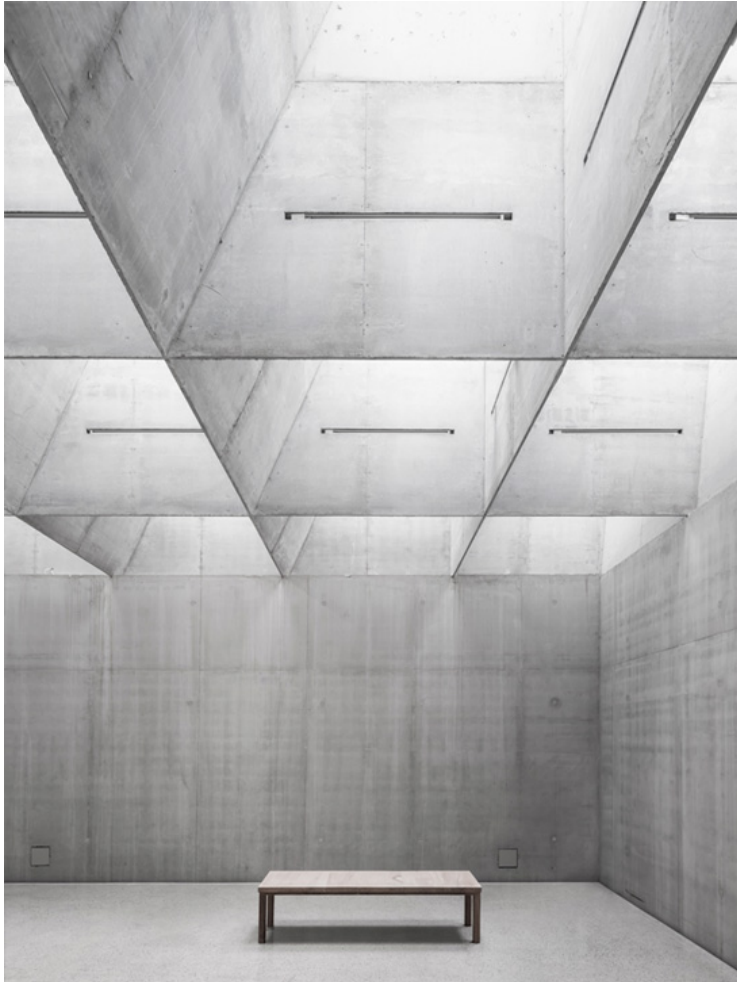
Liljevalchs+: Precisely Tailored Operation
<https://urbannext.net/liljevalchs-precisely-tailored-operation/>



ISSN : 2575-5374

urbanNext Lexicon

Liljevalchs+: Precisely Tailored Operation
<https://urbannext.net/liljevalchs-precisely-tailored-operation/>



ISSN : 2575-5374

urbanNext Lexicon

Liljevalchs+: Precisely Tailored Operation
<https://urbannext.net/liljevalchs-precisely-tailored-operation/>

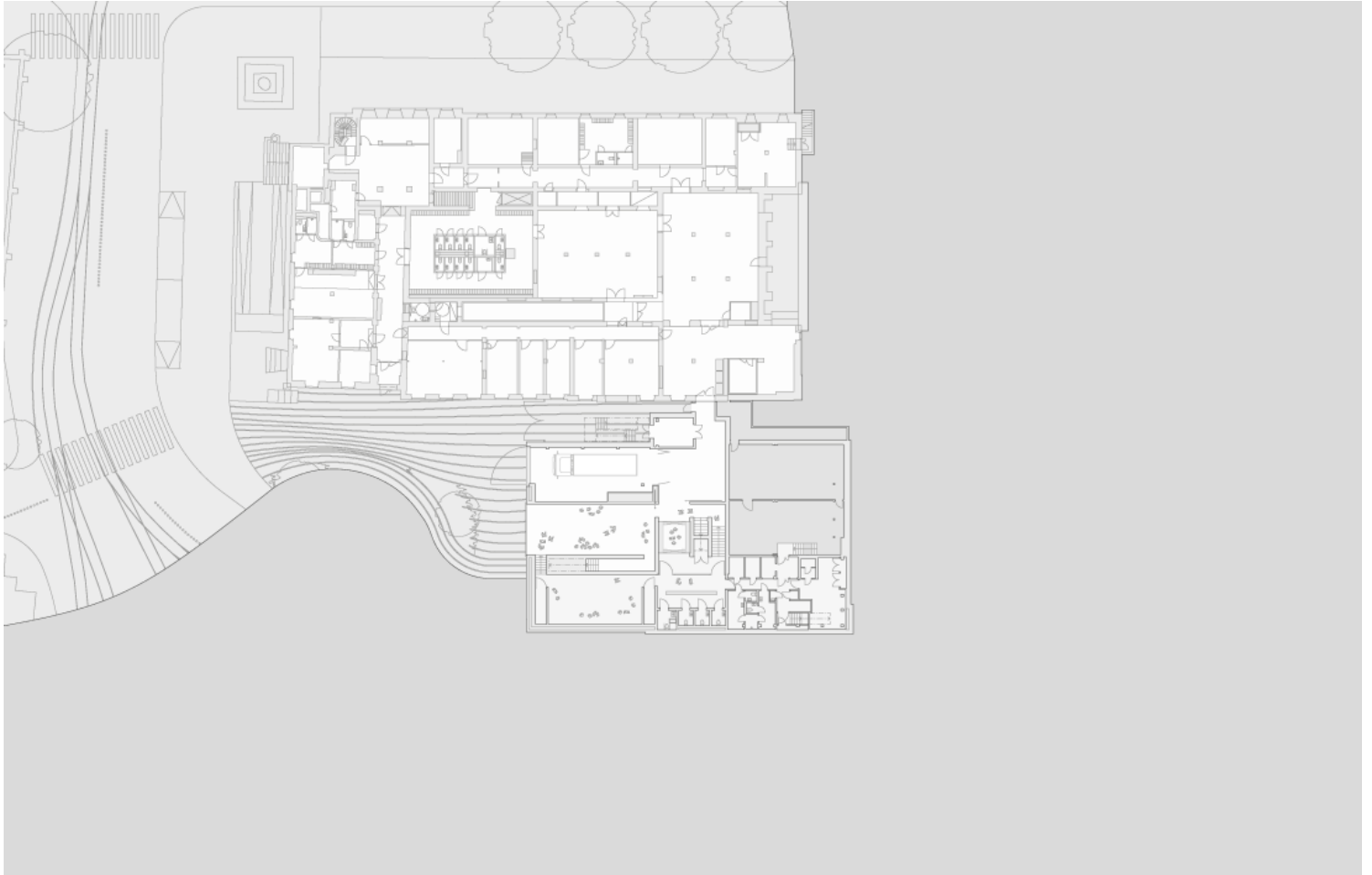


It is rectangular in form, cast like a large concrete block. Glass artist Ingegerd Råman, who worked with us on the project, decorated the façades with crystal clear bottle bottoms, creating a grid of glass.

ISSN : 2575-5374

urbanNext Lexicon

Liljevalchs+: Precisely Tailored Operation
<https://urbannext.net/liljevalchs-precisely-tailored-operation/>



ISSN : 2575-5374

urbanNext Lexicon

Liljevalchs+: Precisely Tailored Operation
<https://urbannext.net/liljevalchs-precisely-tailored-operation/>

ISSN : 2575-5374