



## LIGHT WALLS HOUSE

*Posted on November 12, 2015 by Urban UrbanNext*



---

**Categories:** [mA-style architecture](#), [Middle Density](#), [Project](#), [Territory and mobility](#), [Total Singular Housing](#)

**Tags:** [Housing](#), [Japan](#), [Private housing](#), [Project](#), [Singular Housing](#), [Territorial Approach](#), [Total](#), [Wooden ceiling](#)

# urbanNext Lexicon

Light Walls House

<https://urbannext.net/light-walls-house/>

By taking into consideration the space for the residents, the functions for living, and the relationship with the surrounding environment, creation of a diversity and richness in the house was intended by controlling the concept of light.

The site is in a shady location where a two-story neighboring house closely stands on the south side, and even the shade and shadow on the path intensify the impression of darkness. Therefore, the design intended to create a space with uniformly distributed light by adjusting the way of letting daylight in, and the way of directing the light.



ISSN : 2575-5374

# urbanNext Lexicon

Light Walls House  
<https://urbannext.net/light-walls-house/>



ISSN : 2575-5374

# urbanNext Lexicon

Light Walls House

<https://urbannext.net/light-walls-house/>



ISSN : 2575-5374

# urbanNext Lexicon

Light Walls House

<https://urbannext.net/light-walls-house/>

Along the edges of the 9.1m square roof, sky lights are made, as if creating an outline, in order to provide sunlight. The roof beams narrow the sunlight, and the slightly angled clapboard interior walls with laminated wood reflect and diffuse the light. As a result, soft and uniformly distributed light is created and surrounds the entire space. Along the outline of lighting, work spaces such as a kitchen, bathroom, and study are arranged. Private spaces such as bedrooms and storage are allocated into four boxes. The path-like spaces created between them are public spaces. Each box attempts to balance within a large spatial volume. Light coupled with the rhythm of scale raises the possibilities of the living space for the residents.



ISSN : 2575-5374



# urbanNext Lexicon

Light Walls House  
<https://urbannext.net/light-walls-house/>



ISSN : 2575-5374

# urbanNext Lexicon

Light Walls House  
<https://urbannext.net/light-walls-house/>



ISSN : 2575-5374

# urbanNext Lexicon

Light Walls House

<https://urbannext.net/light-walls-house/>



ISSN : 2575-5374



# urbanNext Lexicon

Light Walls House  
<https://urbannext.net/light-walls-house/>



ISSN : 2575-5374

# urbanNext Lexicon

Light Walls House  
<https://urbannext.net/light-walls-house/>



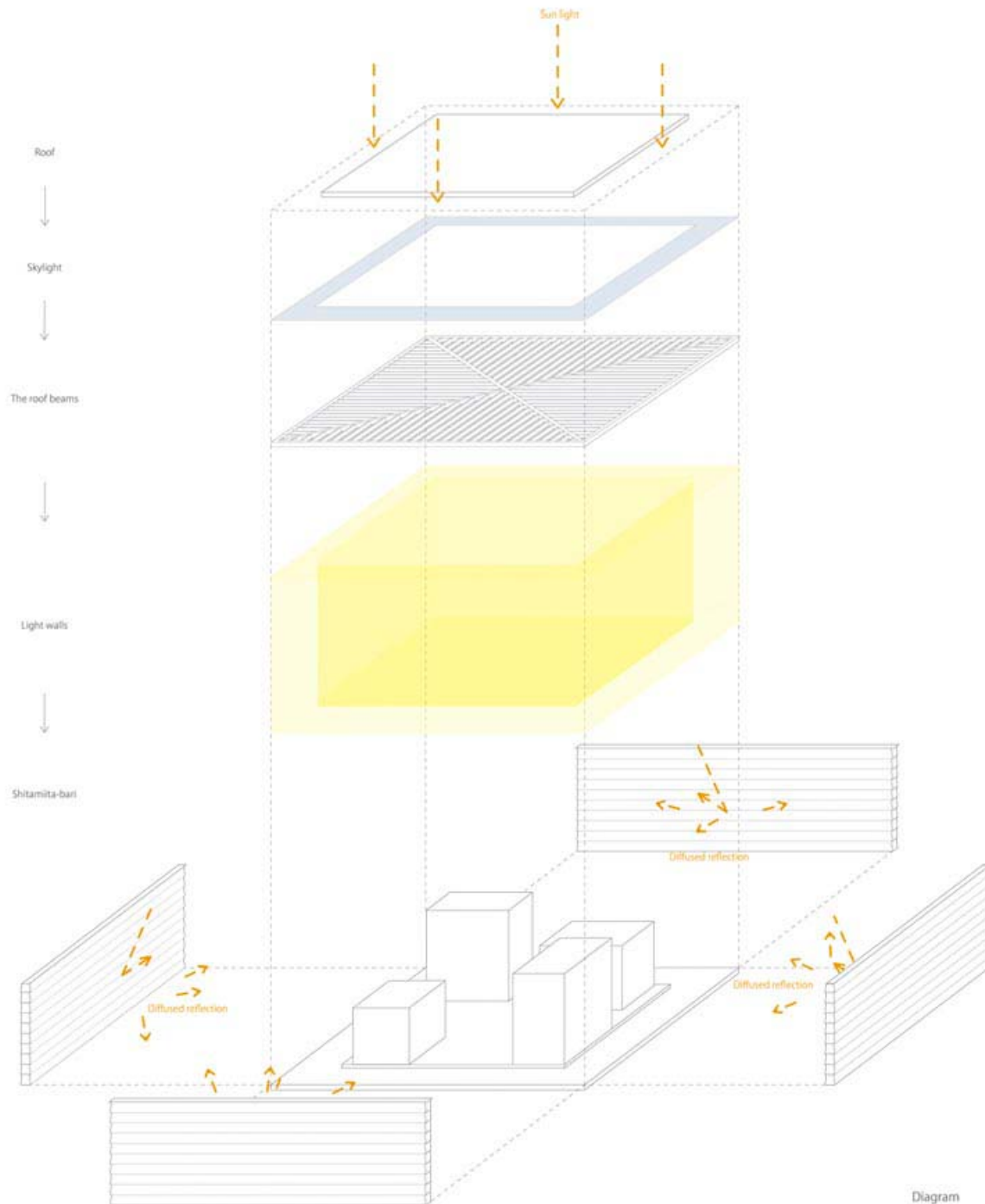
ISSN : 2575-5374



Considering each box as a house, the empty spaces in between can be seen as paths or plazas, and remind us of a small town enclosed in light. The empty spaces, which cause shortening or elongating of distances between people, are intermediate spaces for the residents, as well as intermediate spaces that are connected to the outside when the corridor is open, and these are the image of a social structure that includes a variety of individuals. In terms of a natural component, in which light is softened by small manipulations, and of a social component, in which a town is created in the house, this house turned out to be a courtyard house of light where new values are discovered.

# urbanNext Lexicon

Light Walls House  
<https://urbannext.net/light-walls-house/>

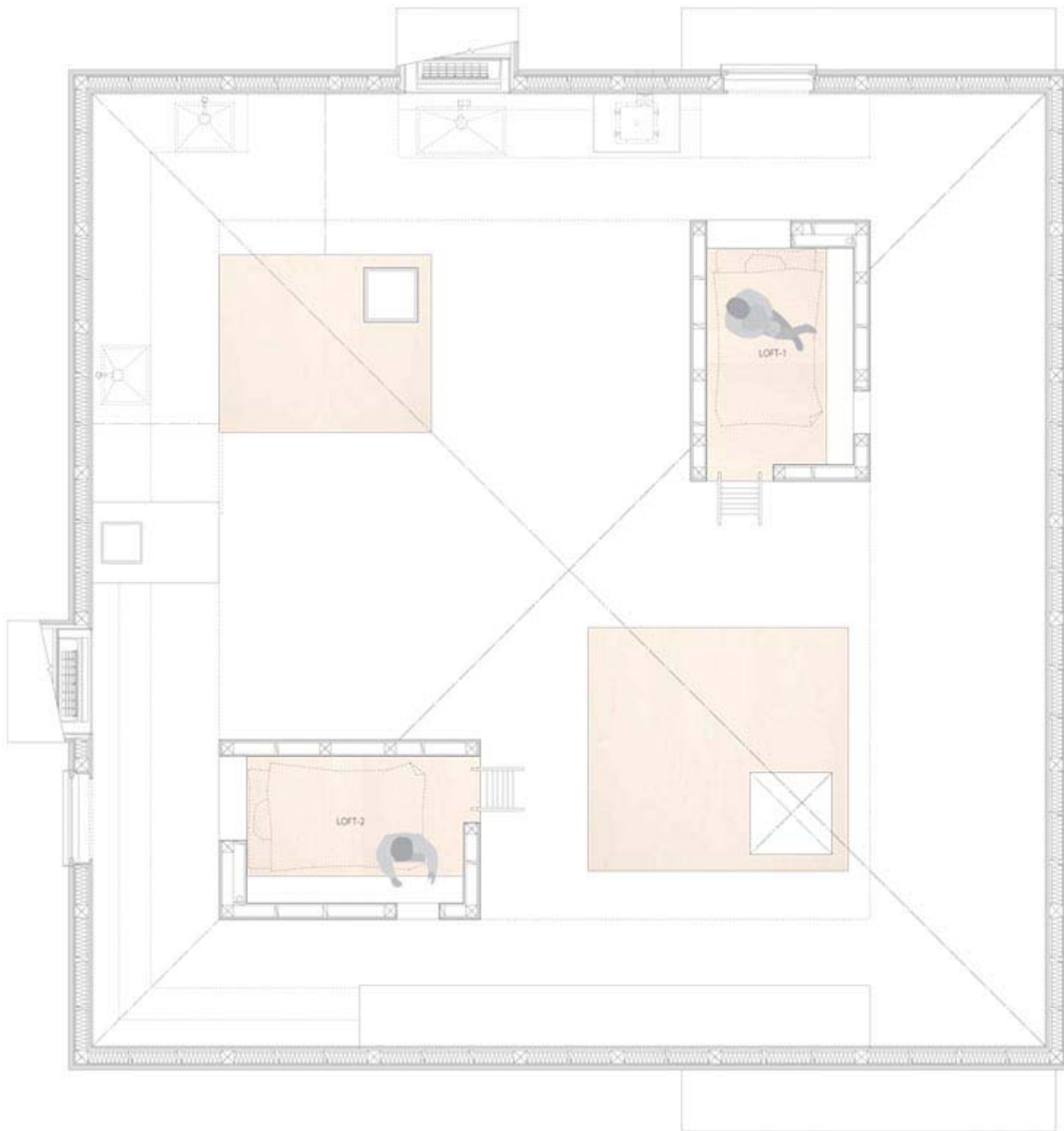


ISSN : 2575-5374



# urbanNext Lexicon

Light Walls House  
<https://urbannext.net/light-walls-house/>



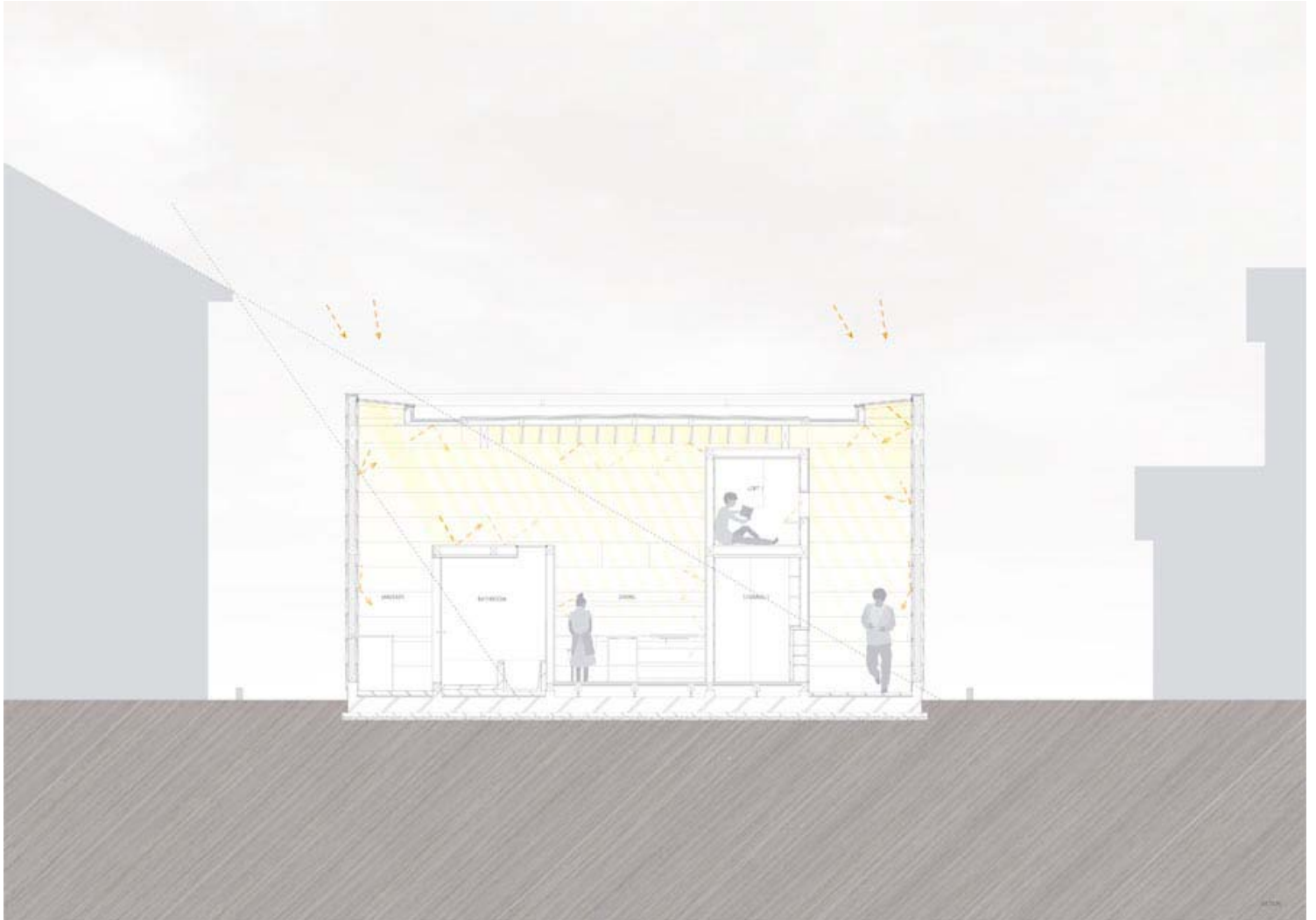
LOFT PLAN



ISSN : 2575-5374

# urbanNext Lexicon

Light Walls House  
<https://urbannext.net/light-walls-house/>



Extract from coming-soon  
**Total Singular Housing**

Related publications:  
**Total Housing**

ISSN : 2575-5374

# urbanNext Lexicon

Light Walls House

<https://urbannext.net/light-walls-house/>

**Total Latin American Architecture**

**Total China**

**Total Landscape**

ISSN : 2575-5374

# urbanNext Lexicon

Light Walls House  
<https://urbannext.net/light-walls-house/>

ISSN : 2575-5374