



## KWIECO SHELTER HOUSE

*Posted on June 24, 2016 by urbanNext*



**Categories:** [africanCities](#), [High Density](#), [Hollmén Reuter Sandman Architects](#), [Middle Density](#), [Politics and economics](#), [Project](#)

**Tags:** [Africa](#), [africanCities](#), [Architect's role](#), [Architecture&Gender](#), [Facilities](#), [Finland](#), [Gender](#), [Moshi](#), [NGO](#), [On Discourse and Practices](#), [Political & Economic Approach](#), [Political implications](#), [Political jurisdiction](#), [Project](#), [Social commitment](#), [Social contributor](#), [Social infrastructure](#), [Tanzania](#)



Kilimanjaro Women Information Exchange and Consultancy Organization (KWIECO) was founded in 1987 in Moshi, Tanzania. It provides advice on legal, health, social and economic issues to women. The fundamental principle on which KWIECO policies are founded is the promotion of human rights, economic justice and gender equality by ensuring equal access to justice and equality for women and children. Social and cultural attitudes have allowed violence against women; the law has failed to provide adequate safeguards against violence or to promote attitudes conducive to women's enjoyment of their fundamental rights.











KWIECO has been receiving an increasing number of victims of domestic violence in recent years, and it has sought to respond to their needs as far as its resources allow. Since 2008, KWIECO has collaborated with Ukumbi NGO, a Finnish non-profit organization that provides architectural services for communities in need. Together, they outlined the KWIECO Shelter project and applied for funding from the Finnish government.







A successful fundraising project allowed KWIECO to purchase a suitable plot for the building and, with the financial support from the Finnish Foreign Ministry and Finnish foundations, the first phase of the building complex was completed and opened in May 2015.











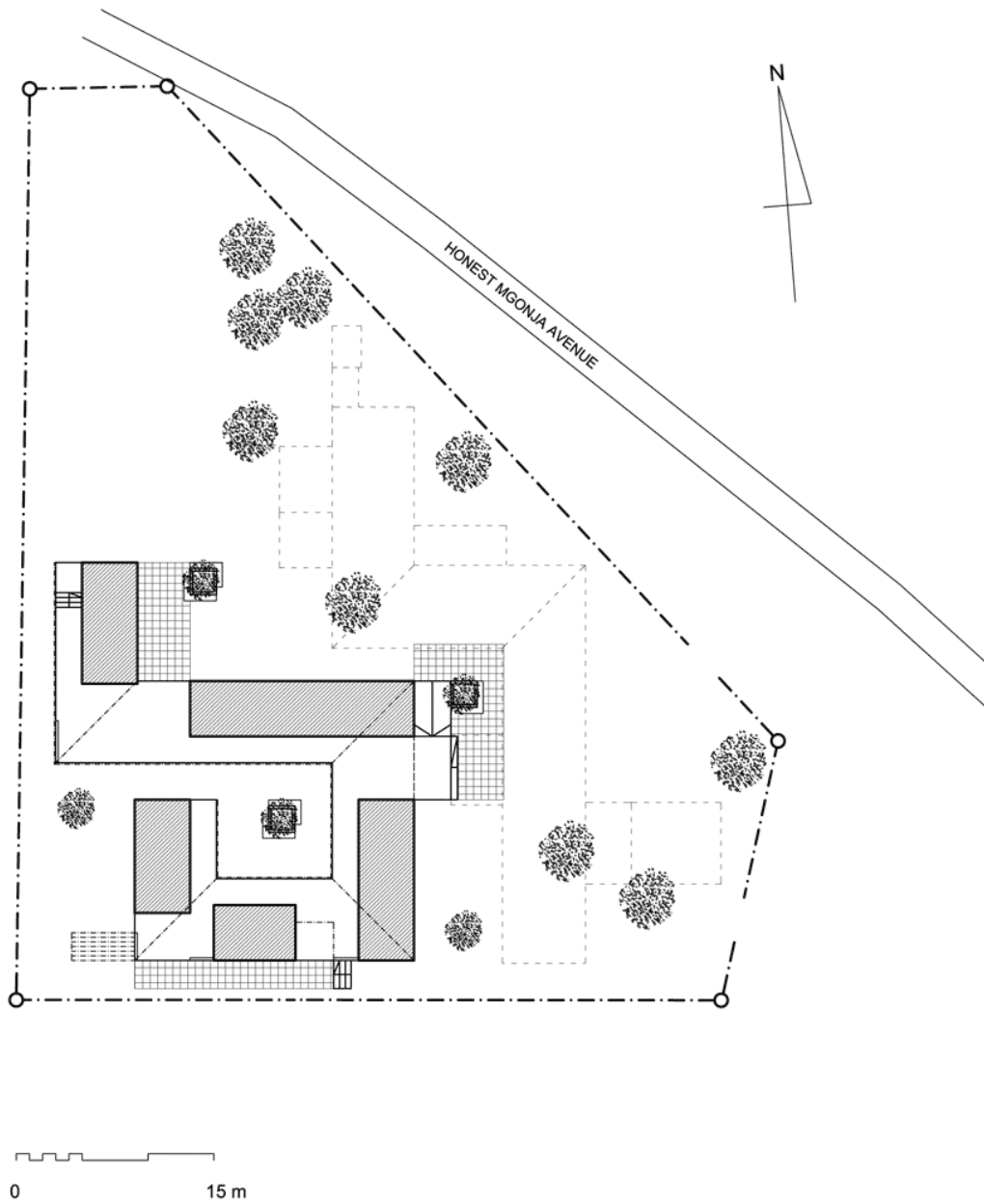


The second phase of the building complex includes spaces for community education and capacity building, as well as office spaces for KWIECO to support their work defending human rights and to increase the stability and reliability of the organization. KWIECO and Ukumbi are currently raising funds to start the construction of the second phase of the project.



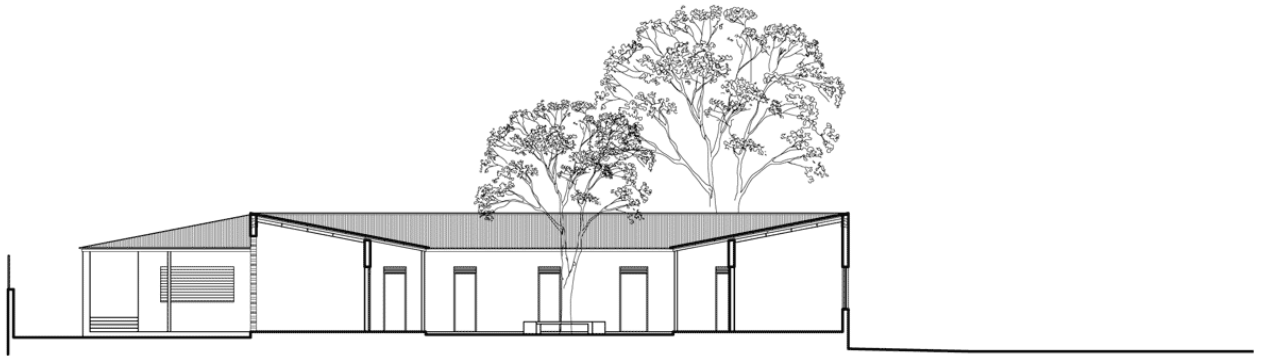
The architecture of the Shelter House is designed to respect the Tanzanian culture, climate and spatial hierarchy. Local materials, renewable energies, local manpower and know-how are of importance, as well as participatory planning to ensure the feeling of shared ownership among the people. In order to provide the clients of the shelter with a safe environment for protection and healing, the shelter is situated in the inner half of the plot; the second phase of the project will create a protecting volume for the shelter.







## Plans



SECTION A-A

## Sections

Large, covered open-air areas allow for natural ventilation and free air movement within the building, providing shade and protection from rain. Covered outdoor spaces are used for meetings and seminars. Roof windows provide daylight to the rooms, thus minimizing the need for electrical lighting during the daytime. Glass tiles are made out of recycled bottles to create ambience and bring colorful light into the bathrooms. Water is heated using low-tech solar heaters. The roof structure has an insulating layer between the corrugated iron roof and the ceiling. In some rooms, the ceiling is made of banana leaves.







The doors of the shelter have a metal frame with bamboo as the surface material. The main gate refers to a culturally important habit among the Tanzanian women: a kanga skirt with a printed message is worn to deliver a subtle message. The Swahili words on the "kanga" of the main gate read: "Equal rights for all are the basis of development."



