



## KATHLEEN ANDREWS TRANSIT GARAGE

*Posted on June 23, 2022 by xavigonzalez*



---

**Categories:** [Contributors](#), [Densities](#), [Formats](#), [gh3\\*](#), [Middle Density](#), [Project](#), [Territory and mobility](#), [Topics](#)

**Tags:** [Efficiency](#), [Lighting design](#), [Mass Transportation](#), [Materials](#), [Mobility](#), [Project](#), [Public Transport](#), [Sustainability](#), [Traffic](#), [Transportation](#)

# urbanNext Lexicon

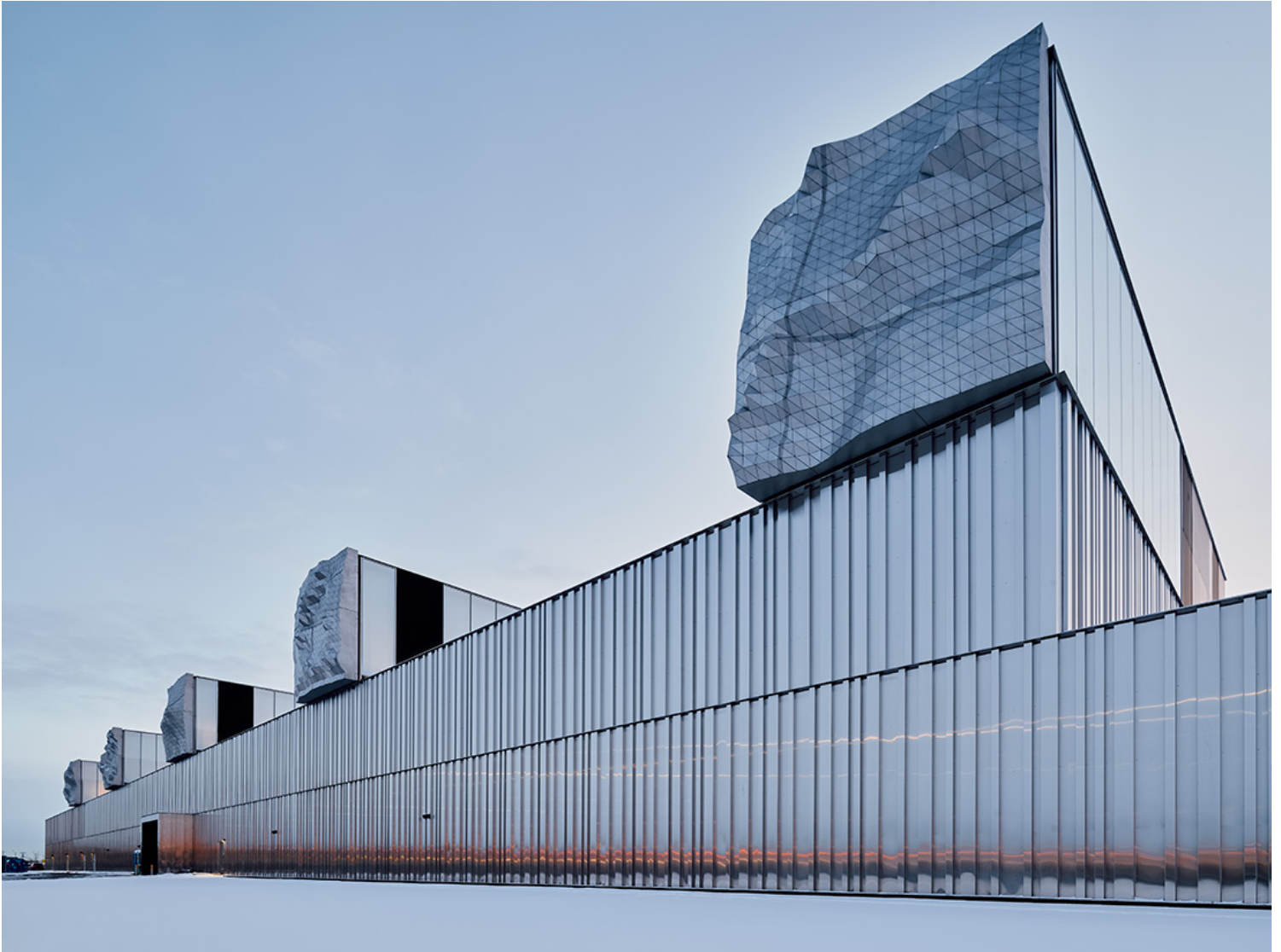
Kathleen Andrews Transit Garage  
<https://urbannext.net/kathleen-andrews-transit-garage/>

Edmonton's Kathleen Andrews Transit Garage (KATG) is a municipal bus maintenance and storage facility designed to set new standards for an often-overlooked building type. Reconciling demanding technical requirements with simple and rigorous architecture, KATG elevates a conventionally utilitarian building and honors its important role within a growing, equitable, sustainable, and resilient contemporary city. Functional efficiency and high sustainability are matched by formal refinement, historic preservation, and public art, enriching both the lives of the people who work there and the wider community it serves.

ISSN : 2575-5374

# urbanNext Lexicon

Kathleen Andrews Transit Garage  
<https://urbannext.net/kathleen-andrews-transit-garage/>

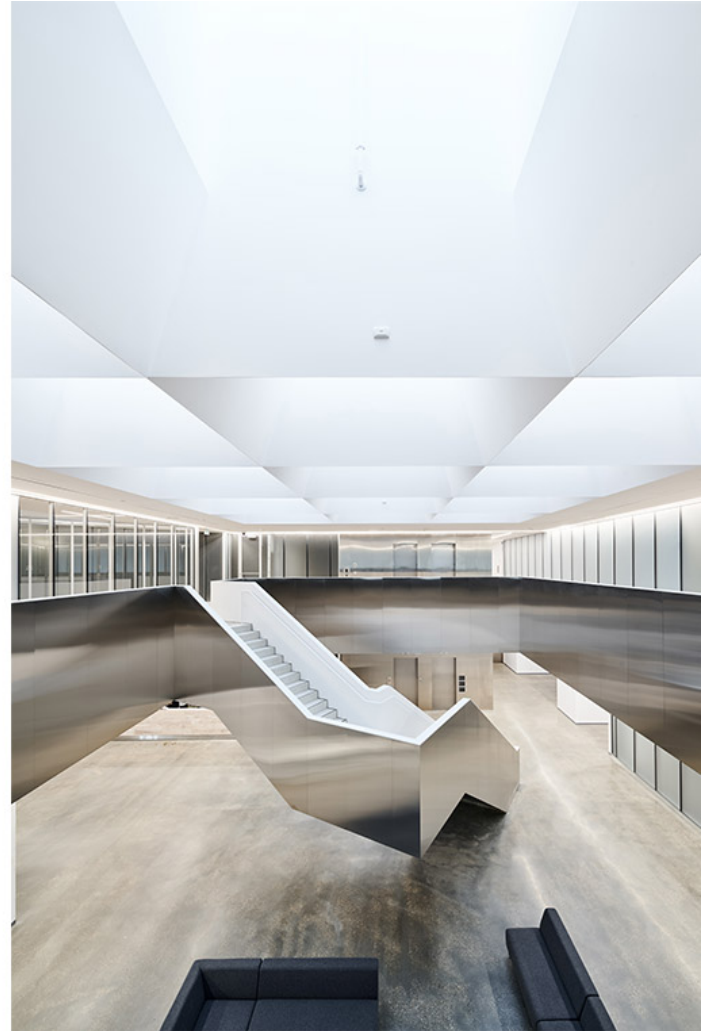


Named after Edmonton's first female bus driver, KATG houses 300 buses, 35 maintenance bays with three undercarriage wash bays, four refuel bays and exterior wash bays. One level of employee parking is provided below grade – important in a locale whose temperatures can vary considerably from 35°C at the peak of summer to -40°C in winter.

ISSN : 2575-5374

# urbanNext Lexicon

Kathleen Andrews Transit Garage  
<https://urbannext.net/kathleen-andrews-transit-garage/>



The building sits on a 10-acre site at the intersection of the Yellowhead Trail (the Trans-Canada Highway) and Fort Road which aligns with the CP Rail tracks. In 1936 the site was occupied by the Canada Packers' abattoirs, stockyards and meat processing plant. Designed by famed architect and educator Eric Arthur, the Canada Packer's factory was a prime example of functional Canadian modernism until it was demolished in the 1980s apart from its 50-meter-tall smokestack. KATG restores this legacy by conserving the smokestack and remediating the brownfield site through ecological greening, micro-climatic thresholds, bioswales and dense tree planting. Moreover, thoughtful landscaping including gabion baskets filled with Albertan river stones and granulated rubber tire ground cover are appropriate materials to seamlessly integrate architecture and

ISSN : 2575-5374



# urbanNext Lexicon

Kathleen Andrews Transit Garage  
<https://urbannext.net/kathleen-andrews-transit-garage/>

landscape, while also highlighting the foundations and the smokestack in memory of what existed there before.



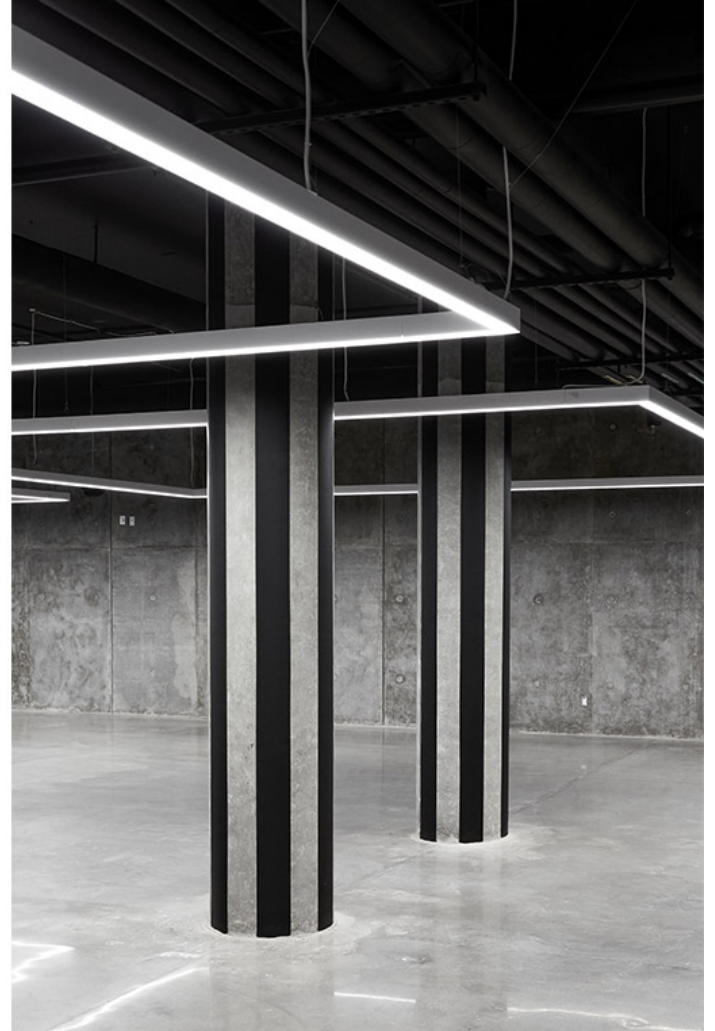
Inside, the building is powerfully pure and monochromatic. Employees enter through a generous lower-level congregating area, and up to a day-lit central atrium via a sculptural stair. The facility is designed to optimize the maneuvering, storage, and maintenance of the bus fleet and to promote overlap and exchange between blue- and white-collar personnel in an almost political gesture of

ISSN : 2575-5374

# urbanNext Lexicon

Kathleen Andrews Transit Garage  
<https://urbannext.net/kathleen-andrews-transit-garage/>

collegiality represented through architecture.



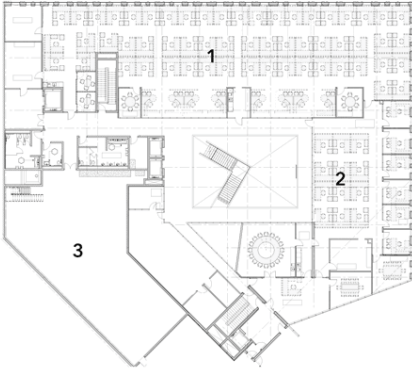
Transit depots rarely attract attention from either designers or the public, despite their functions being critical to the life of most communities. KATG attempts to celebrate these services with a new civic landmark and further Edmonton's reputation as a progressive city.

ISSN : 2575-5374

# urbanNext Lexicon

Kathleen Andrews Transit Garage  
<https://urbannext.net/kathleen-andrews-transit-garage/>

Second Floor



- |   |                   |    |                      |
|---|-------------------|----|----------------------|
| 1 | General Admin     | 8  | Educational Spaces   |
| 2 | Director's Office | 9  | ETS Security Lockers |
| 3 | Future Daycare    | 10 | Training Room        |
| 4 | Cafeteria         | 11 | Bus Operator Lockers |
| 5 | Meeting Room      | 12 | Quiet Room           |
| 6 | ETS Security      | 13 | Common Room          |
| 7 | ETS Admin         |    |                      |

ISSN : 2575-5374

# urbanNext Lexicon

Kathleen Andrews Transit Garage  
<https://urbannext.net/kathleen-andrews-transit-garage/>