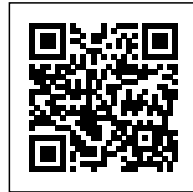




KAIHUA COUNTY 1101: A LARGE-SCALE MULTI- FUNCTIONAL BUILDING

Posted on September 18, 2019 by martabuges



Categories: [Middle Density](#), [Project](#), [Territory and mobility](#), [UAD](#), [Urban Paradigms](#)

Tags: [Architecture's challenge](#), [Architecture&nature](#), [China](#), [Design](#), [Design strategies](#), [Environment](#), [Extension](#), [Landmark](#), [Landscape](#), [Materials](#), [Multifunctional building](#), [Office building](#), [Project](#), [Topography](#), [Urban Dialogue](#), [Volume](#), [Working Space](#)

urbanNext Lexicon

Kaihua County 1101: A Large-Scale Multi-Functional Building
<https://urbannext.net/kaihua-county-1101/>

The project was commissioned by Kaihua County Urban Construction and Development Co., Ltd. for the design of a comprehensive office building with three functional requirements: the Urban Archives; the Civil Defense Command Center; and the Housing and Construction Bureau at the entrance to the scenic spot. The project has a superior geographical position. The south side is a multi-story terrace house. The north side is a low-lying mountain with abundant vegetation. The valley on the east side is quiet and far-reaching. The west side is just a few steps away from the bank of the Qinjiang River. The mountain can be seen from afar. Like the description of Tao Yuanming's "Peach Blossom Spring", a large-scale multi-functional building with open access functions and private concealed works is constructed between the general green mountains and green waters. It fully respects the original buildings, which is the challenge of this project.

ISSN : 2575-5374

urbanNext Lexicon

Kaihua County 1101: A Large-Scale Multi-Functional Building

<https://urbannext.net/kaihua-county-1101/>



ISSN : 2575-5374

urbanNext Lexicon

Kaihua County 1101: A Large-Scale Multi-Functional Building
<https://urbannext.net/kaihua-county-1101/>



The design first locates the urban archives on the ground floor and semi-basement. The canteen is on the second floor near the west side road, and the civil air defense command center is on the second floor near the edge of the valley, using the terrain to lower the two layers. The volume is hidden in the mountain. Finally, the office of the Bureau of Housing and Construction is placed on the folding board, and the building has a visual effect on the mountain by means of cantilevering. The landscape resources are utilized to the greatest extent. The main office spaces in the building are placed in a three-story rectangular box floating on a folding platform. The pure and simple shape conforms to the trend of the south side folding platform and is arranged parallel to the north side mountain contour. Meanwhile, the box is overhanging about 12 meters in the east, so that the box and the lower folding platform form a combination of shapes that balance in the displacement.

ISSN : 2575-5374

urbanNext Lexicon

Kaihua County 1101: A Large-Scale Multi-Functional Building

<https://urbannext.net/kaihua-county-1101/>



ISSN : 2575-5374

urbanNext Lexicon

Kaihua County 1101: A Large-Scale Multi-Functional Building
<https://urbannext.net/kaihua-county-1101/>



There is a small road connecting the north side of the mountain as a passage for people to go up and down the mountain. To fully respect the surrounding landscape resources, the solution of different elevation platforms is proposed. Urban archives with relatively dense traffic are distributed on the bottom floors. Platforms with different elevations are connected by ramps and stairs, just like the continuation of the north side mountain contours, so that the lower buildings and the mountains are naturally integrated. This not only restores the original access to the mountain, but also makes the multi-elevation platform an ideal place for local citizens and users to stop and look out at the

ISSN : 2575-5374

urbanNext Lexicon

Kaihua County 1101: A Large-Scale Multi-Functional Building
<https://urbannext.net/kaihua-county-1101/>

surrounding scenery.



The framed window hole at the east and the west is a typical and very effective means of framing the scenery. The wall of the upper three-layer box in gray and white is made of imitation stone, colored with real stone paint and embedded with a very fine dark gray window frame. The glass window with excellent transparency is like a frame, so that the most beautiful part of the valley entrance is embedded in the building like a never-fading picture. The winter turns to spring, the clouds roll by, the trees fade and flourish again. People remain in a stable and comfortable building, enjoying the natural beauty of the outside without a sense of distance, forming a spatial continuity inside and outside the building.

ISSN : 2575-5374

urbanNext Lexicon

Kaihua County 1101: A Large-Scale Multi-Functional Building

<https://urbannext.net/kaihua-county-1101/>



ISSN : 2575-5374

urbanNext Lexicon

Kaihua County 1101: A Large-Scale Multi-Functional Building
<https://urbannext.net/kaihua-county-1101/>



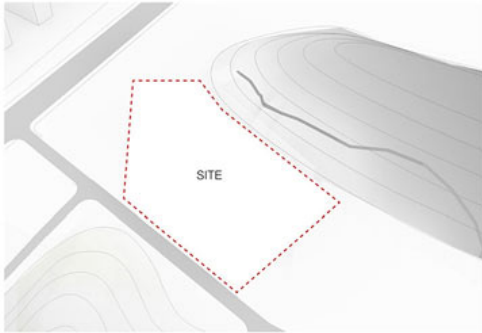
The building adopts black, white and gray to reflect the artistic color of the Kaihua city landscape and Chinese landscape painting. When the clouds in the mountains linger, the pedestal of the building disappears among the mountains, and the upper gray-white box floats on the mountains. Viewing distant mountains and rivers on different platforms creates a feeling of integration within the surrounding mountains and the sky. The extremely simple shape of the building lines combines the virtual and the real, the transformation of light and shadow. The design has successfully resolved many functional spaces including the urban archives, the civil defense command center, offices, etc., and it harmoniously echoes the surrounding mountains, reflecting the architectural design ideas of coexistence between man and nature.

ISSN : 2575-5374

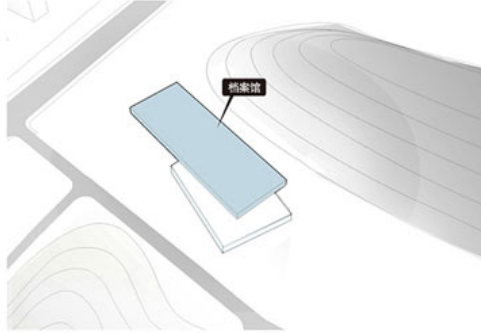
urbanNext Lexicon

Kaihua County 1101: A Large-Scale Multi-Functional Building
<https://urbannext.net/kaihua-county-1101/>

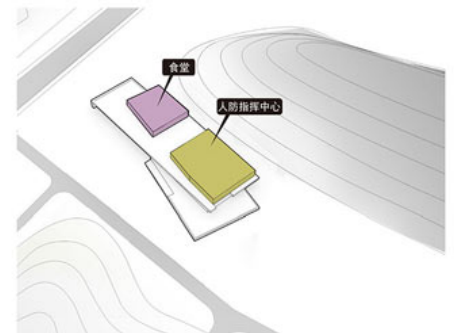
The project has been in use for more than two years now. Every time you return to the base site, you can feel that the building and the environment have gradually merged into each platform and the surrounding mountain roads. People are more and more fond of working here, which may be the most meaningful value of our original design concept.



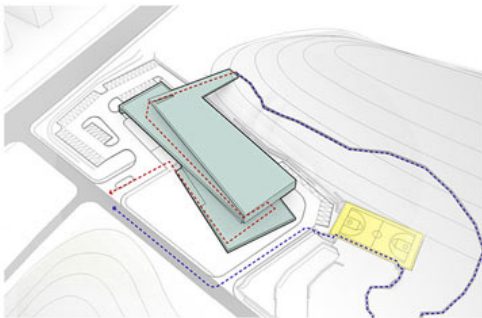
基地内有一条小路连通北侧山体，做为人们日常上下山的通道
There is a small road connecting the north side of the mountain, which serves as a daily passage for people to go up and down the mountain.



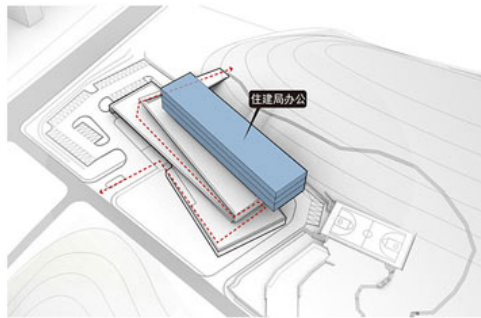
流量较为密集的城市档案馆分布在底部一层
Urban archives with dense traffic are distributed at the bottom one floors



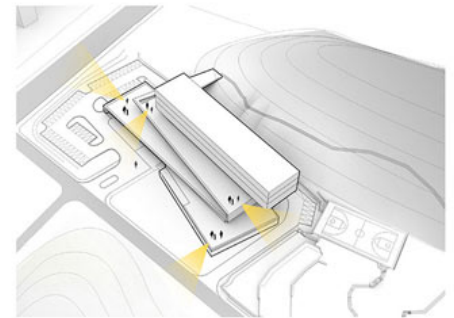
食堂和人防指挥中心分布在建筑二层
The canteen and civil air defense command center are distributed on the second floor of the building.



利用折板平台将两层体量隐于山体之中，通过坡道与楼梯等连接不同标高的平台
Through the folding platform to hide the two layers of mass in the mountain, and connect the platform with different elevations through ramps and stairs.



建筑主要的办公部分功能采用一个漂浮在平台上三层高的长方体盒子
The main office part of the building features a three-story rectangular box floating on the platform.



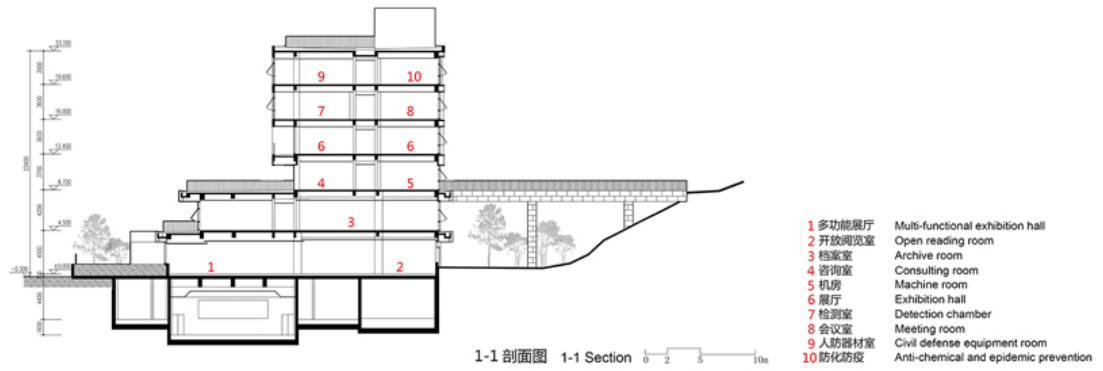
多标高平台成为当地市民和使用者驻足观赏周边风景的理想场所
The multi-elevation platform is an ideal place for local citizens and users to stop and watch the surrounding scenery.

ISSN : 2575-5374

urbanNext Lexicon

Kaihua County 1101: A Large-Scale Multi-Functional Building

<https://urbannext.net/kaihua-county-1101/>



ISSN : 2575-5374

urbanNext Lexicon

Kaihua County 1101: A Large-Scale Multi-Functional Building

<https://urbannext.net/kaihua-county-1101/>

ISSN : 2575-5374