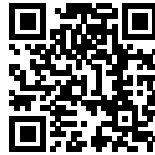


JORDI & ÁFRICA HOUSE

Posted on September 1, 2021 by urbanNext



Categories: [Designing Matter](#), [Middle Density](#), [Project](#), [Technology and fabrication](#), [TEd'A Arquitectes](#)

Tags: [Local manufacture](#), [Local resources](#), [Local solutions](#), [Local techniques](#), [Mallorca](#), [Montuiri](#), [Natural materials](#), [Natural metaphor](#), [Private housing](#), [Project](#), [Raw materials](#), [Refurbishment](#), [Sandstone](#), [Second life](#), [Singular Housing](#), [Stone](#), [Technological Approach](#), [Thermal comfort](#), [Thermal inertia](#), [Thermodynamic practices](#), [Thermodynamics](#)

urbanNext Lexicon

Jordi & África House

<https://urbannext.net/jordi-africa-house/>

The house is located on a relatively small plot. This led to condensing the built volume on one side, lining the façade up with the street and leaving maximum space for the yard, with lots of sunlight.



ISSN : 2575-5374

urbanNext Lexicon

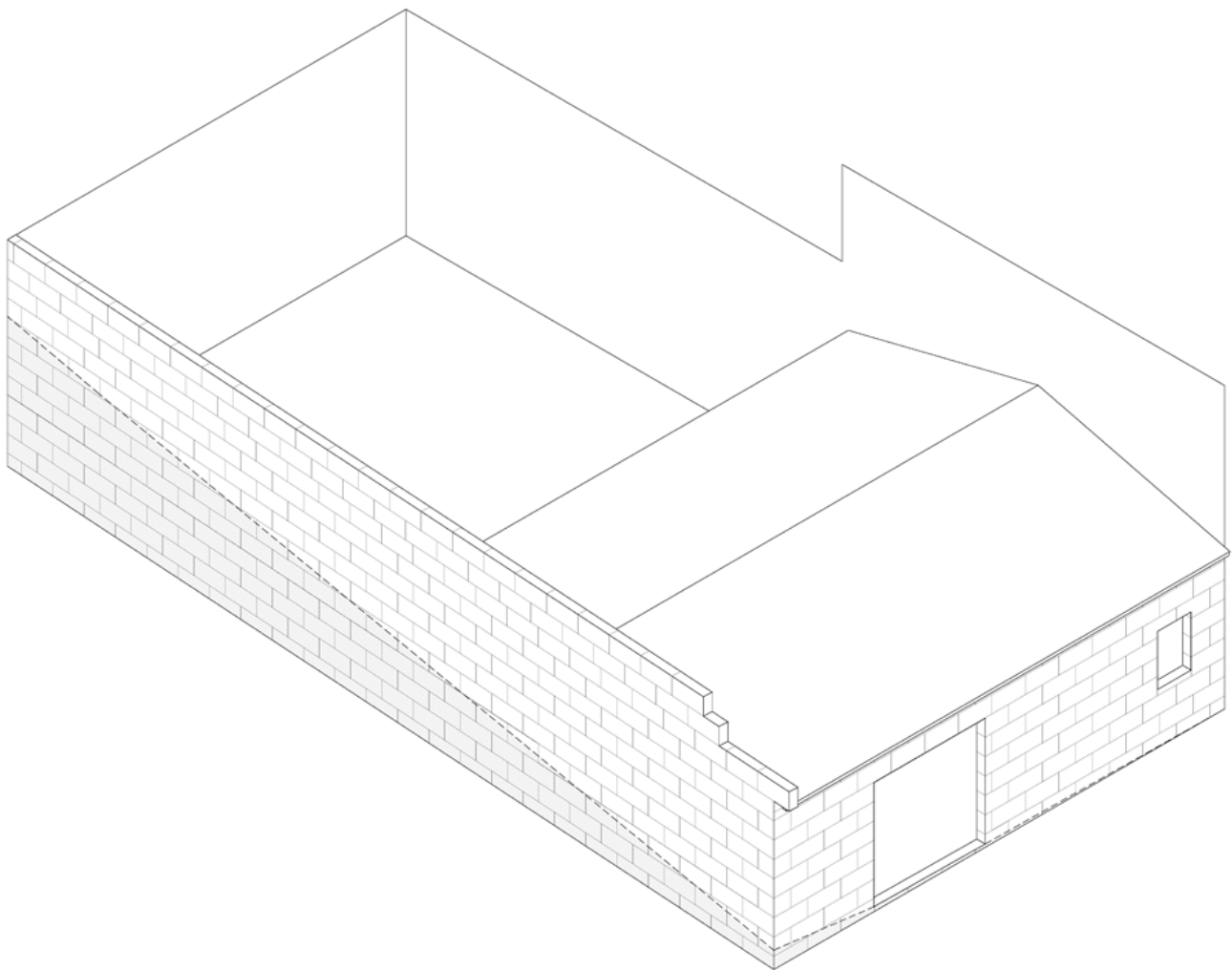
Jordi & África House

<https://urbannext.net/jordi-africa-house/>



ISSN : 2575-5374

Site Plan



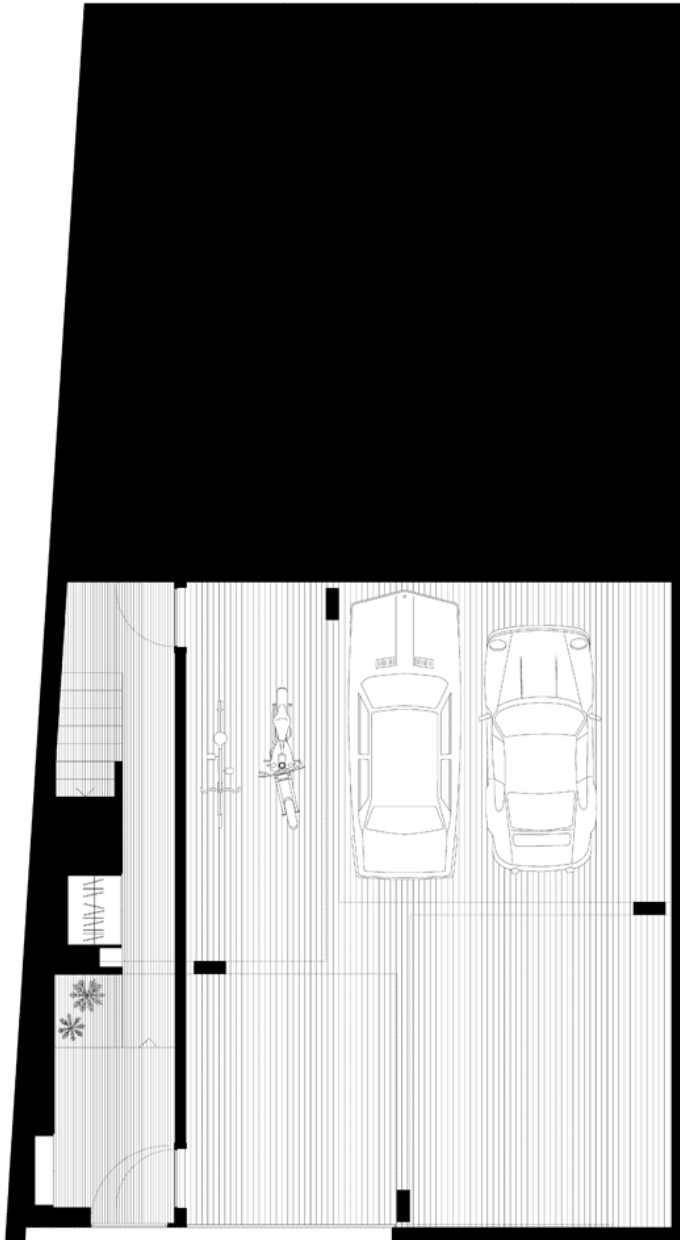
Existing Building

The house occupies a corner lot. As a result, instead of repeating the typical row house single-direction organization (street-yard), the design takes on a double orientation. The house doesn't have a single dominant direction. It aims to look out in every direction.

urbanNext Lexicon

Jordi & África House

<https://urbannext.net/jordi-africa-house/>



ISSN : 2575-5374

urbanNext Lexicon

Jordi & África House
<https://urbannext.net/jordi-africa-house/>

Plans



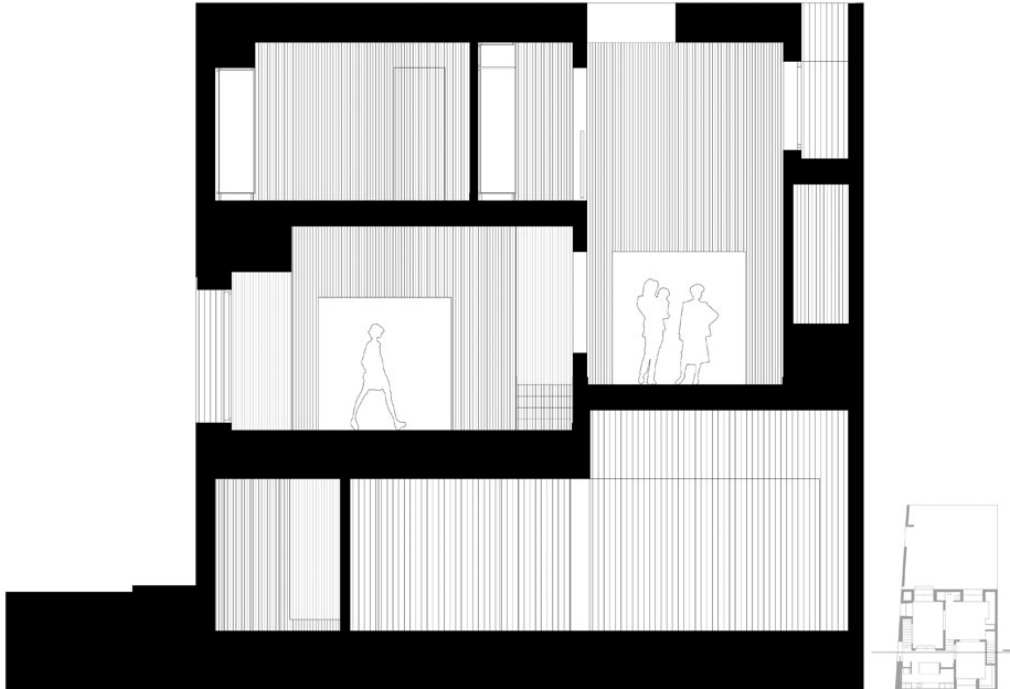
Longitudinal Sections

ISSN : 2575-5374

urbanNext Lexicon

Jordi & África House

<https://urbannext.net/jordi-africa-house/>



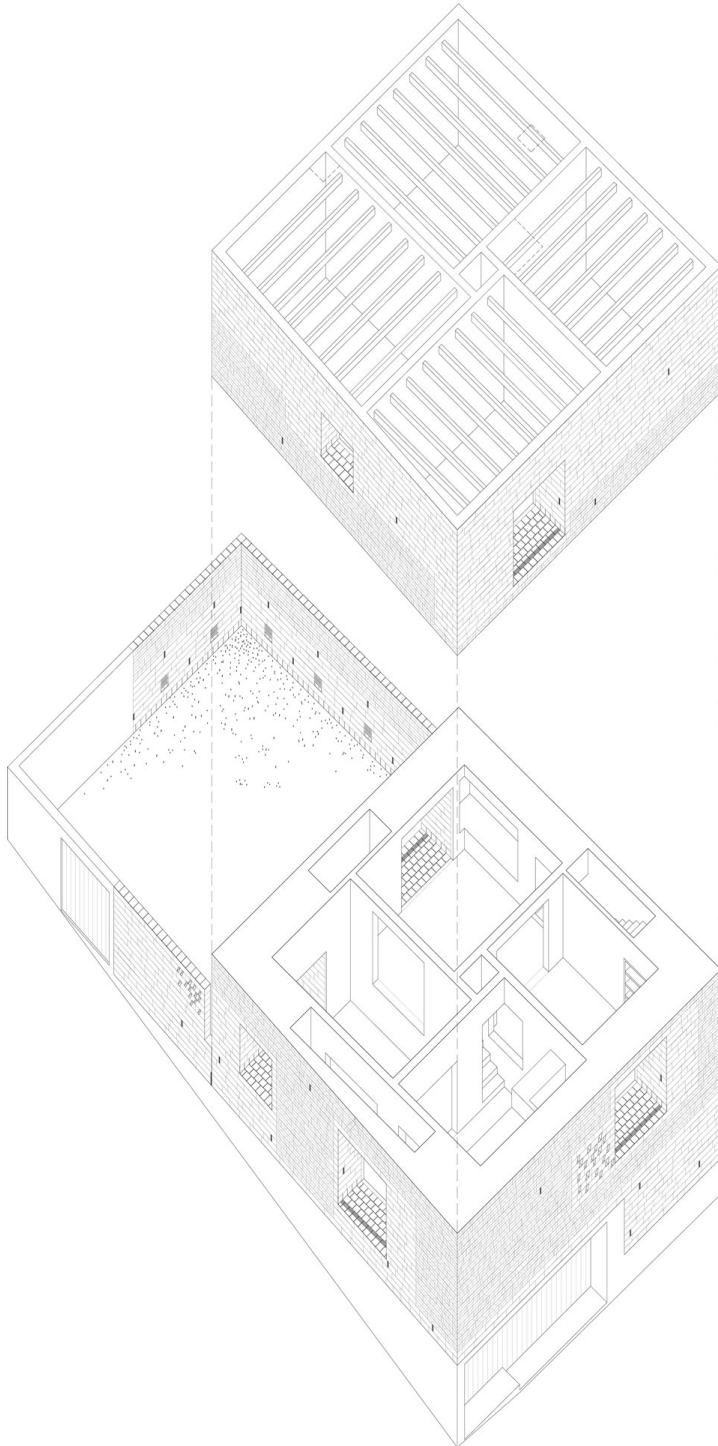
ISSN : 2575-5374

Cross Sections

urbanNext Lexicon

Jordi & África House

<https://urbannext.net/jordi-africa-house/>



ISSN : 2575-5374

Axonomic View

The structure is resolved with load-bearing walls arranged in a gammadion cross. The structure doesn't have a dominant direction either; it gives shape to the space.



urbanNext Lexicon

Jordi & África House

<https://urbannext.net/jordi-africa-house/>



In order to keep the wall structure as the focal point for the space, the building services are installed around the perimeter, creating a thick façade, freeing up the interior and allowing for visual relationships and shared uses among the different rooms.

ISSN : 2575-5374

urbanNext Lexicon

Jordi & África House

<https://urbannext.net/jordi-africa-house/>



The room divisions coincide with the load-bearing walls. Exterior windows are opened onto the street and interior windows are opened between rooms. There are no differences between the two window types.

The materialization of the walls was essential to the construction process. There was a small existing construction on the plot made from marès sandstone, a local material. Common sense led us to reuse this material and the strategy was cemented from there.

ISSN : 2575-5374

urbanNext Lexicon

Jordi & África House

<https://urbannext.net/jordi-africa-house/>



ISSN : 2575-5374

urbanNext Lexicon

Jordi & Àfrica House

<https://urbannext.net/jordi-africa-house/>

During the construction, we decided to reuse the marès sandstone blocks. Their manipulation and positioning highlights the work of the craftsman who, years earlier, carved the grooves called *abeuradors* into the stones. These grooves were used to channel the mortar that held the pieces together. With today's techniques, however, *abeuradors* are no longer necessary. Now they provide texture and character to the façade of Can Jordi i n'Àfrica; over the years this texture will also change with the effects of the passage of time. The old marès sandstone pieces are combined with new ones, due to an issue of quantity. The new pieces were taken from the same quarry as the old ones and are used in the areas where a larger degree of precision is needed: window frames, roof edgings, etc.



ISSN : 2575-5374

Piece of Marès Evolution



Axonometric Detail

In this way, the building is implanted into its surroundings through a reading of the environment and an understanding of the material and its use in construction.



urbanNext Lexicon

Jordi & África House
<https://urbannext.net/jordi-africa-house/>

ISSN : 2575-5374