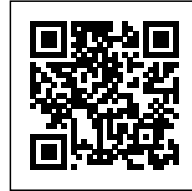




HOUSE IN RIO DE JANEIRO

Posted on June 17, 2016 by Urban UrbanNext



Categories: [Angelo Bucci](#), [High Density](#), [Project](#), [Southern Coexistences](#), [spbr Architects](#), [Territory and mobility](#), [Total Latin American Architecture](#)

Tags: [Brazil](#), [Concrete](#), [Design process](#), [Façade orientation](#), [Glass](#), [Natural dialogue](#), [Private housing](#), [Project](#), [Rio de Janeiro](#), [Searches on scales](#), [Singular Housing](#), [Southern Coexistences](#), [Territorial Approach](#), [Topography](#)

urbanNext Lexicon

House in Rio de Janeiro
<https://urbannext.net/house-in-rio/>

Santa Teresa is a historical neighborhood that offers some great views of the city of Rio de Janeiro. The house is located in one of the highest points of Santa Teresa's hill. From the north side of the house it is possible to see the old downtown from its south side, a more panoramic view of Pão de Açúcar¹ and the Guanabara Bay. The site starts at 100 meters above sea level at the cable car street and finishes at 125 meters at a breathtaking viewpoint of Pão de Açúcar.



Reference to the “Sugar Loaf Mountain,” a landmark well known in postcards of Rio de Janeiro, Brazil.

ISSN : 2575-5374

urbanNext Lexicon

House in Rio de Janeiro
<https://urbannext.net/house-in-rio/>



SITE PLAN

ISSN : 2575-5374

urbanNext Lexicon

House in Rio de Janeiro
<https://urbannext.net/house-in-rio/>



Plans

ISSN : 2575-5374

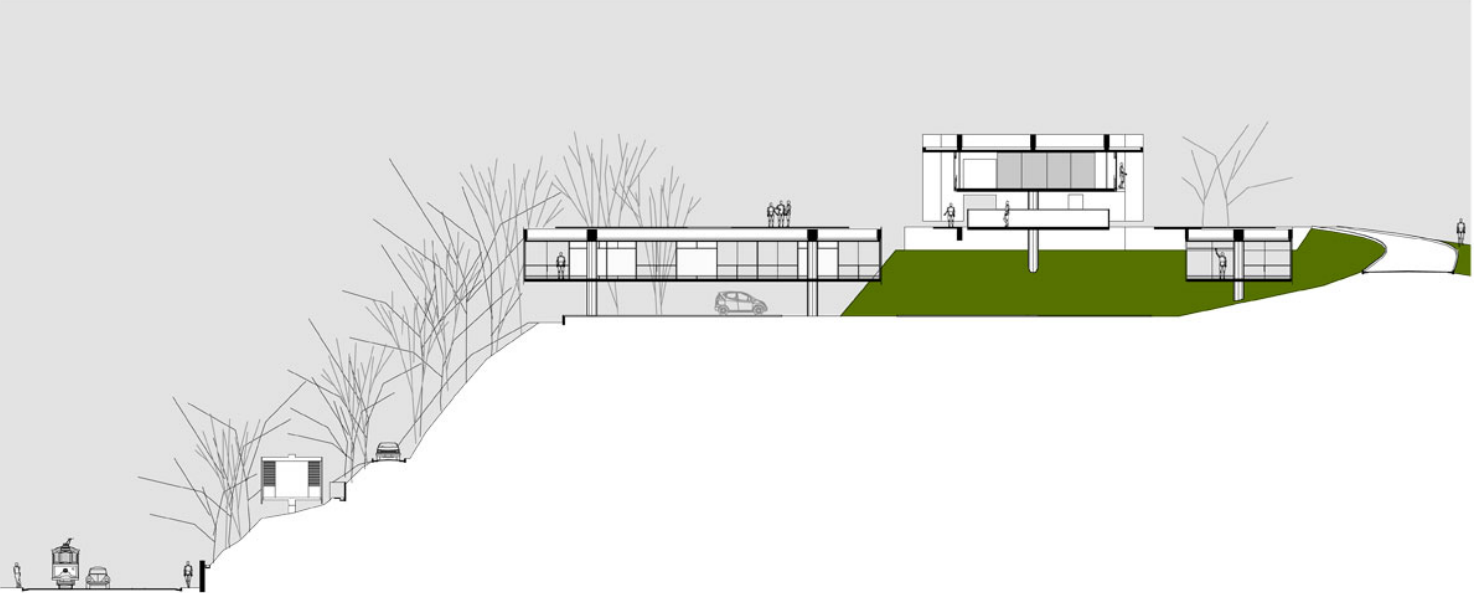
urbanNext Lexicon

House in Rio de Janeiro
<https://urbannext.net/house-in-rio/>

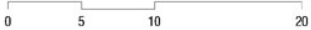
ISSN : 2575-5374

urbanNext Lexicon

House in Rio de Janeiro
<https://urbannext.net/house-in-rio/>



SECTION



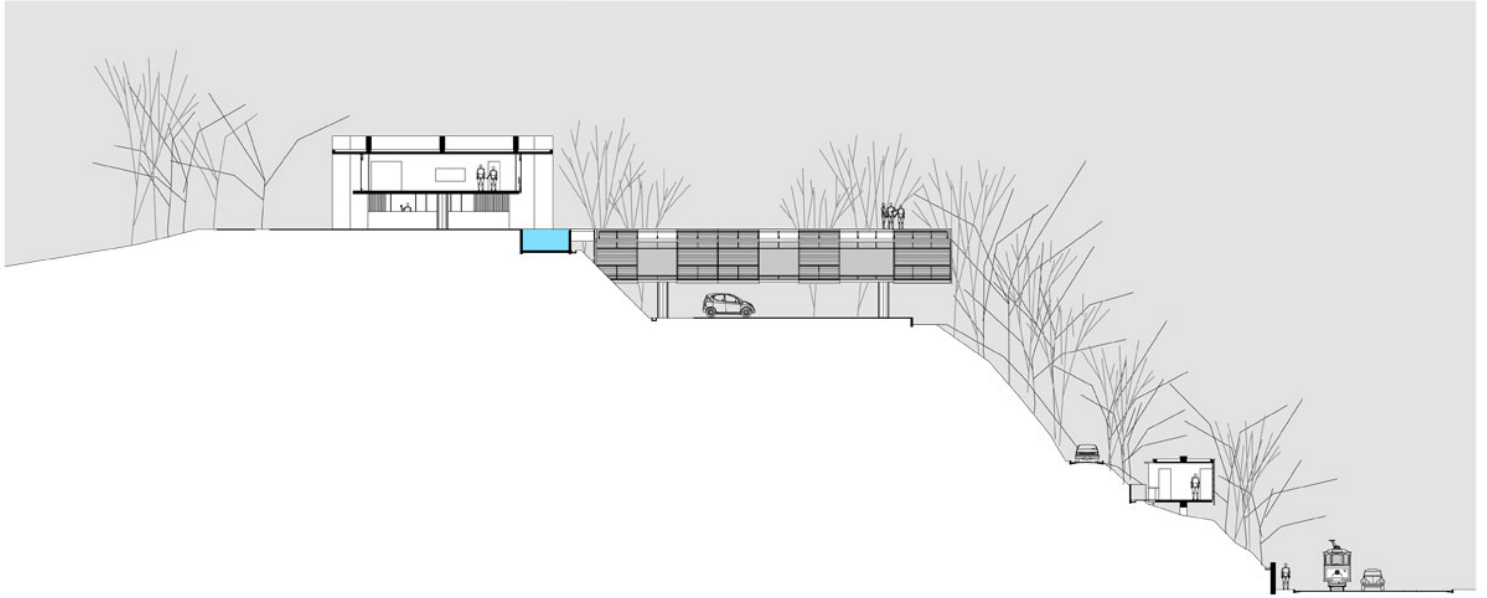
urbanNext Lexicon

House in Rio de Janeiro
<https://urbannext.net/house-in-rio/>

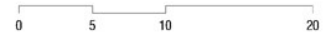
ISSN : 2575-5374

urbanNext Lexicon

House in Rio de Janeiro
<https://urbannext.net/house-in-rio/>



SECTION



The project takes into consideration the two pre-existent levels of the pronounced topography: 120 meters and 125 meters over sea level. At the lower level, there is a linear block that leads to the bedrooms and the office. Their main glass facade opens up to the delightful garden on the east side. These two prismatic and linear volumes are opened on the east and west sides but are completely closed on the north and south sides, leaving the ground under them empty. The roof was designed to make a complementary platform on the upper plateau.

urbanNext Lexicon

House in Rio de Janeiro
<https://urbannext.net/house-in-rio/>



ISSN : 2575-5374

urbanNext Lexicon

House in Rio de Janeiro
<https://urbannext.net/house-in-rio/>



ISSN : 2575-5374

urbanNext Lexicon

House in Rio de Janeiro
<https://urbannext.net/house-in-rio/>



ISSN : 2575-5374

urbanNext Lexicon

House in Rio de Janeiro
<https://urbannext.net/house-in-rio/>



ISSN : 2575-5374

urbanNext Lexicon

House in Rio de Janeiro
<https://urbannext.net/house-in-rio/>



ISSN : 2575-5374

urbanNext Lexicon

House in Rio de Janeiro
<https://urbannext.net/house-in-rio/>



The living room is located over the higher plateau providing a view of downtown on the north side and of the Guanabara Bay and Pão de Açúcar on the south. This volume is closed on the east and west sides to avoid sun heat and to emphasize the magnificent views on the other sides. It leaves the level below completely open. Thus, there is a bare level between bedrooms and living room, which is filled by the kitchen, where, according to the traditional Brazilian culture, most people will spend their spare time. It is a spread out and blown-up construction that should become part of Rio de Janeiro's landscape.

ISSN : 2575-5374

urbanNext Lexicon

House in Rio de Janeiro
<https://urbannext.net/house-in-rio/>



Extract from



ISSN : 2575-5374

Related publications:

Total Housing

Total Singular Housing

Total China

Total Landscape

urbanNext Lexicon

House in Rio de Janeiro
<https://urbannext.net/house-in-rio/>

ISSN : 2575-5374