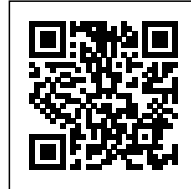




HOUSE IN LEIRIA

Posted on February 13, 2016 by Urban UrbanNext



Categories: [Aires Mateus](#), [Low Density](#), [Project](#), [Territory and mobility](#), [Total Singular Housing](#)

Tags: [Leiria](#), [Natural dialogue](#), [Portugal](#), [Privacy](#), [Private housing](#), [Project](#), [Singular Housing](#), [Territorial Approach](#), [Topography](#), [Total](#)



The dwelling is an iconic representation of the archetypical house, with the distinctive feature of an open center that creates a large, triple-height courtyard.





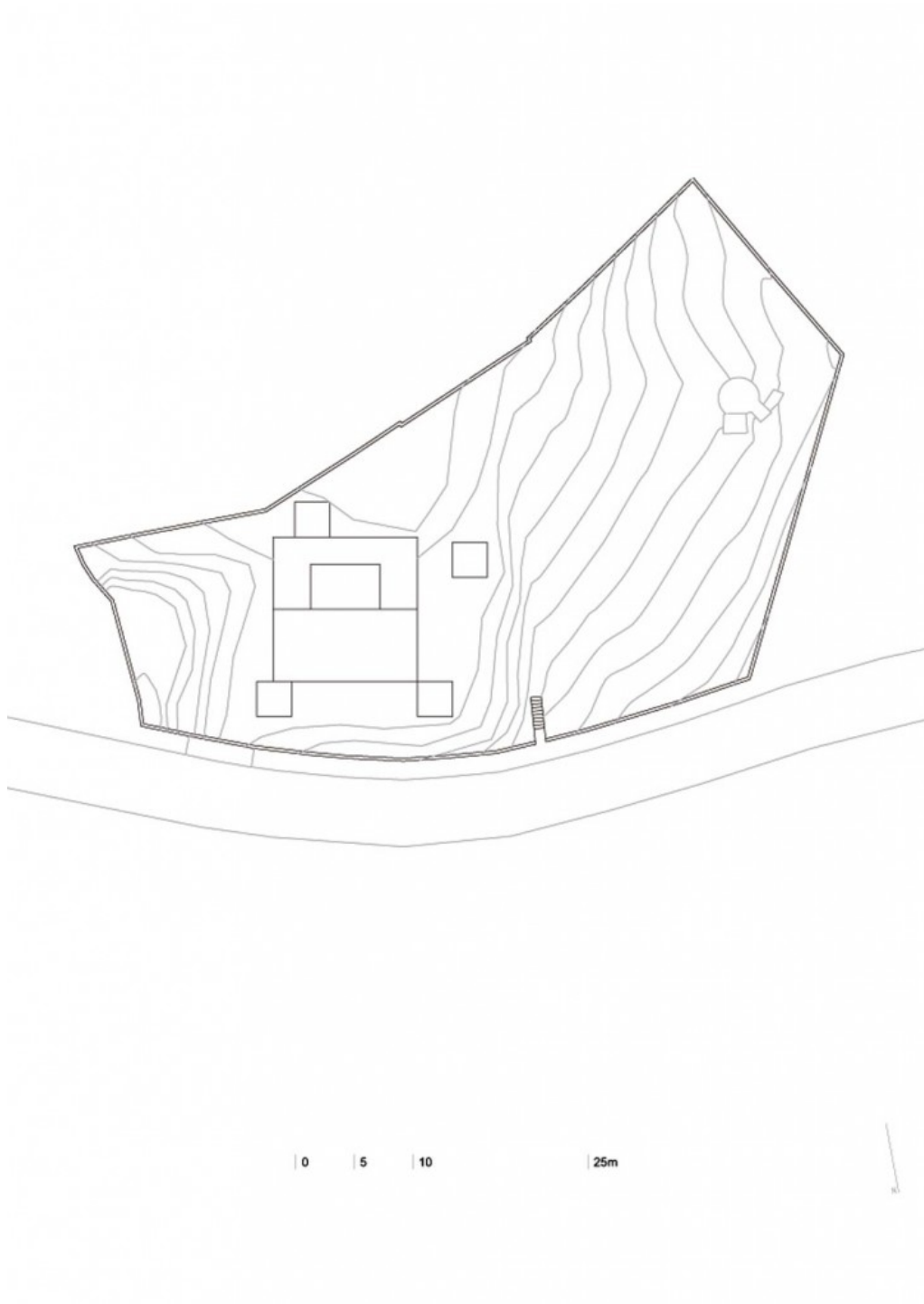






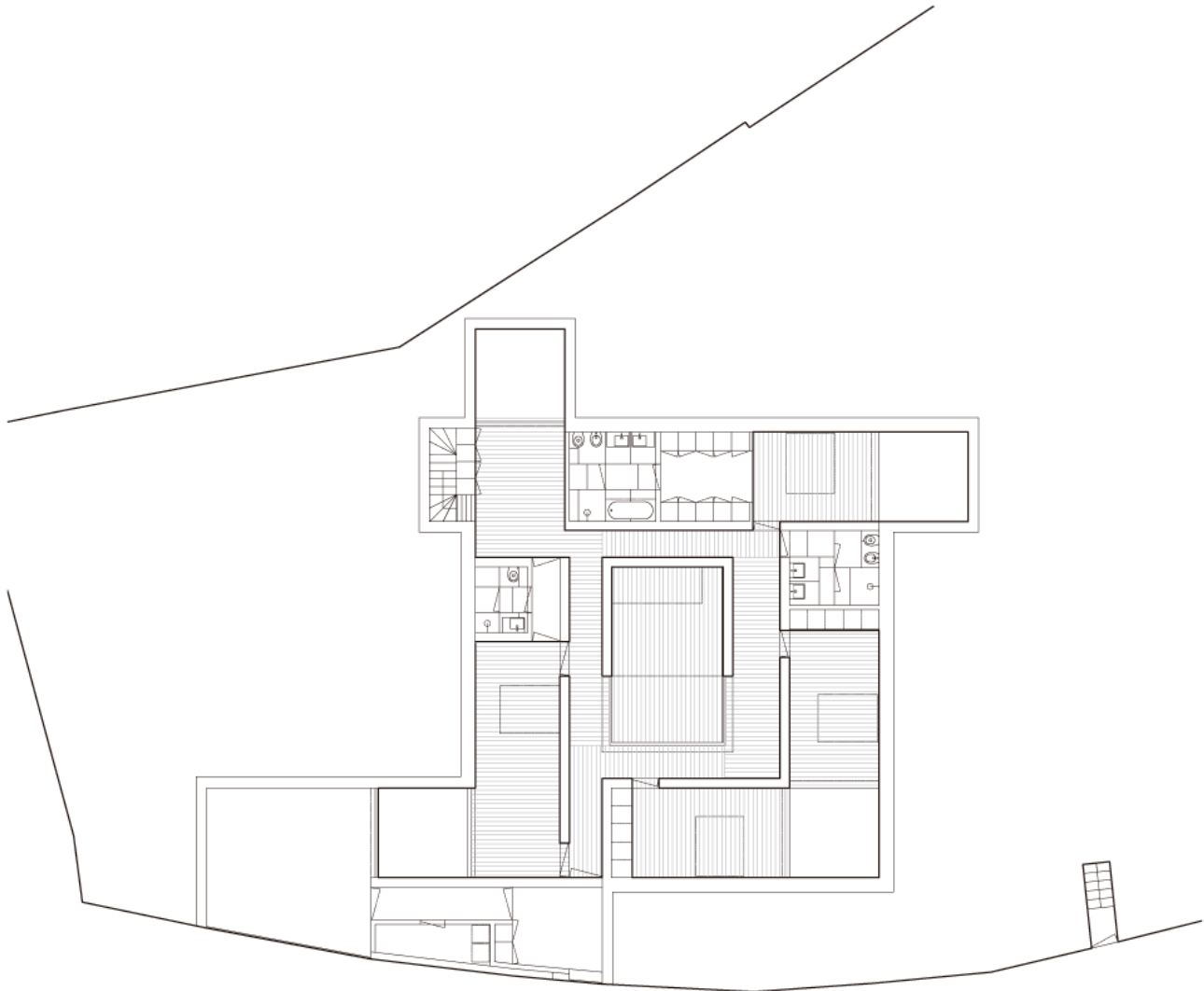


The functional organization of the house, which is located on the outskirts of Leiria, appears conventional; it is divided into private areas or bedrooms, and shared areas. The private areas are sunken beneath ground level, around the central courtyard. Each room opens onto a private patio to enhance the feeling of privacy. In contrast, the shared areas are gathered around the central void, which allows for the entry of natural light and allows for views toward the city center.





Site Plan

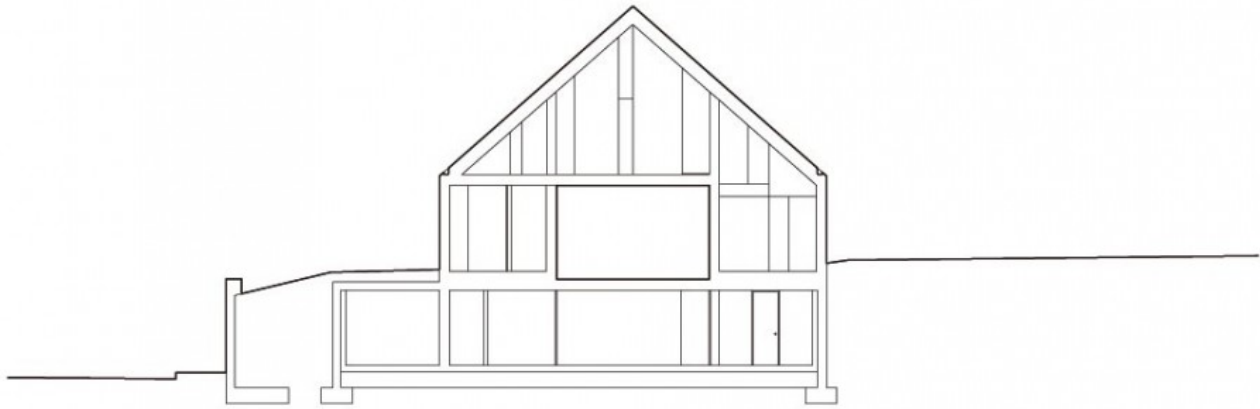


0 2 5 10m

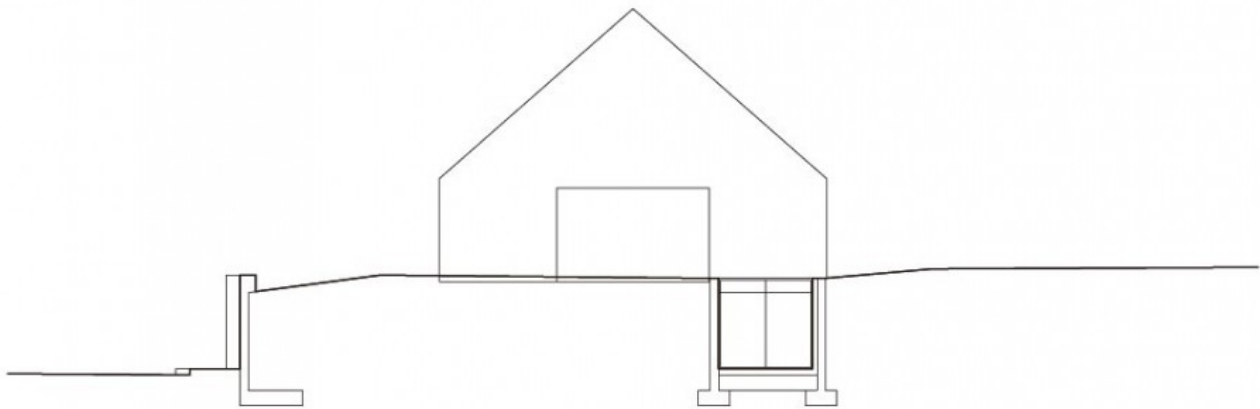
plan level 0



Plans

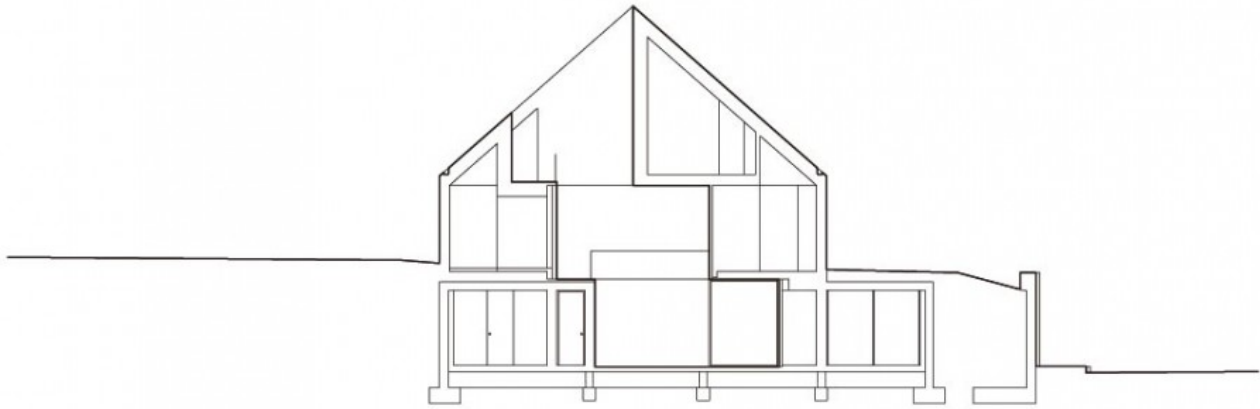


section



0 2 5 10m

section



section



0 2 5 10m

section



Sections

Extract from coming soon

Total Singular Housing

Related publications:

Total Housing

Total Latin American Architecture

Total China

Total Landscape

