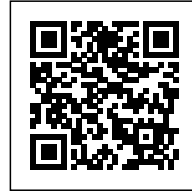




HOUSE IN ESTORIL

Posted on December 12, 2016 by urbanNext



Categories: [António Costa Lima Arquitectos](#), [Middle Density](#), [Project](#), [Territory and mobility](#)

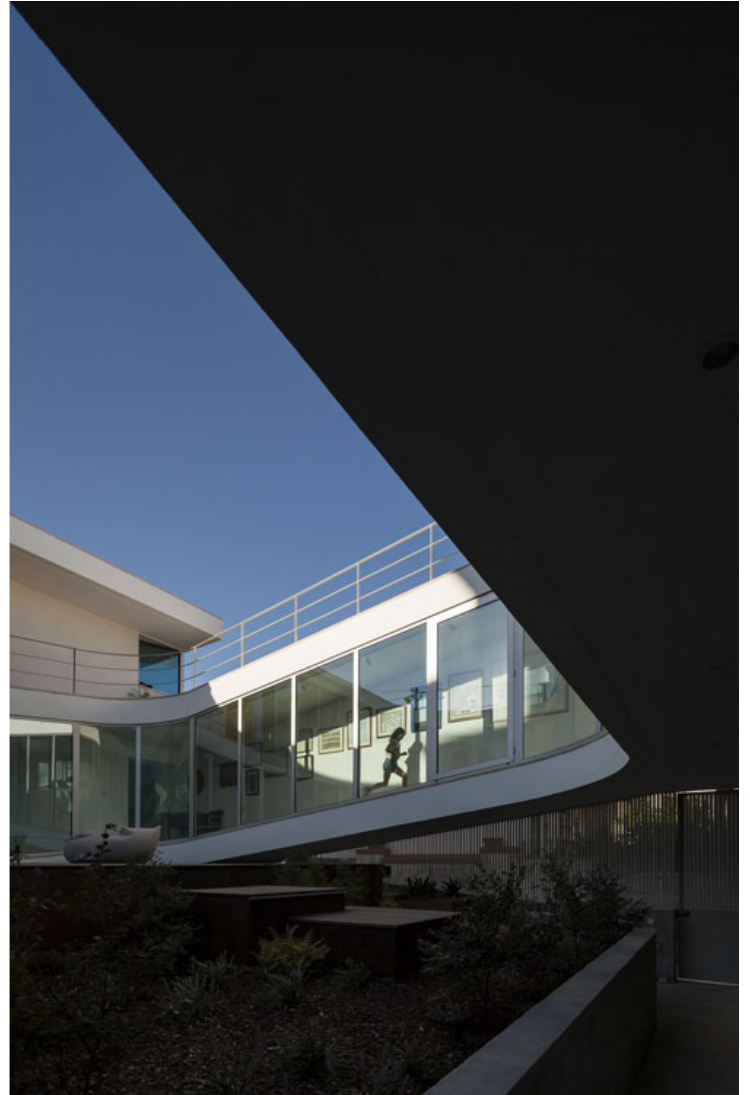
Tags: [Cascais](#), [Courtyard](#), [Estoril](#), [Inner courtyard](#), [Portugal](#), [Private housing](#), [Project](#), [Singular Housing](#), [Topography](#), [Urban conditions](#)

urbanNext Lexicon

House in Estoril

<https://urbannext.net/house-in-estoril/>

The house is located in one of the characteristic Estoril neighborhoods that have their origin in summer occupation and have expanded along the edge of the so-called Costa do Sol. The neighborhood is an orthogonal grid with dense articulation, narrow streets and small-scale plots.



ISSN : 2575-5374

urbanNext Lexicon

House in Estoril

<https://urbannext.net/house-in-estoril/>

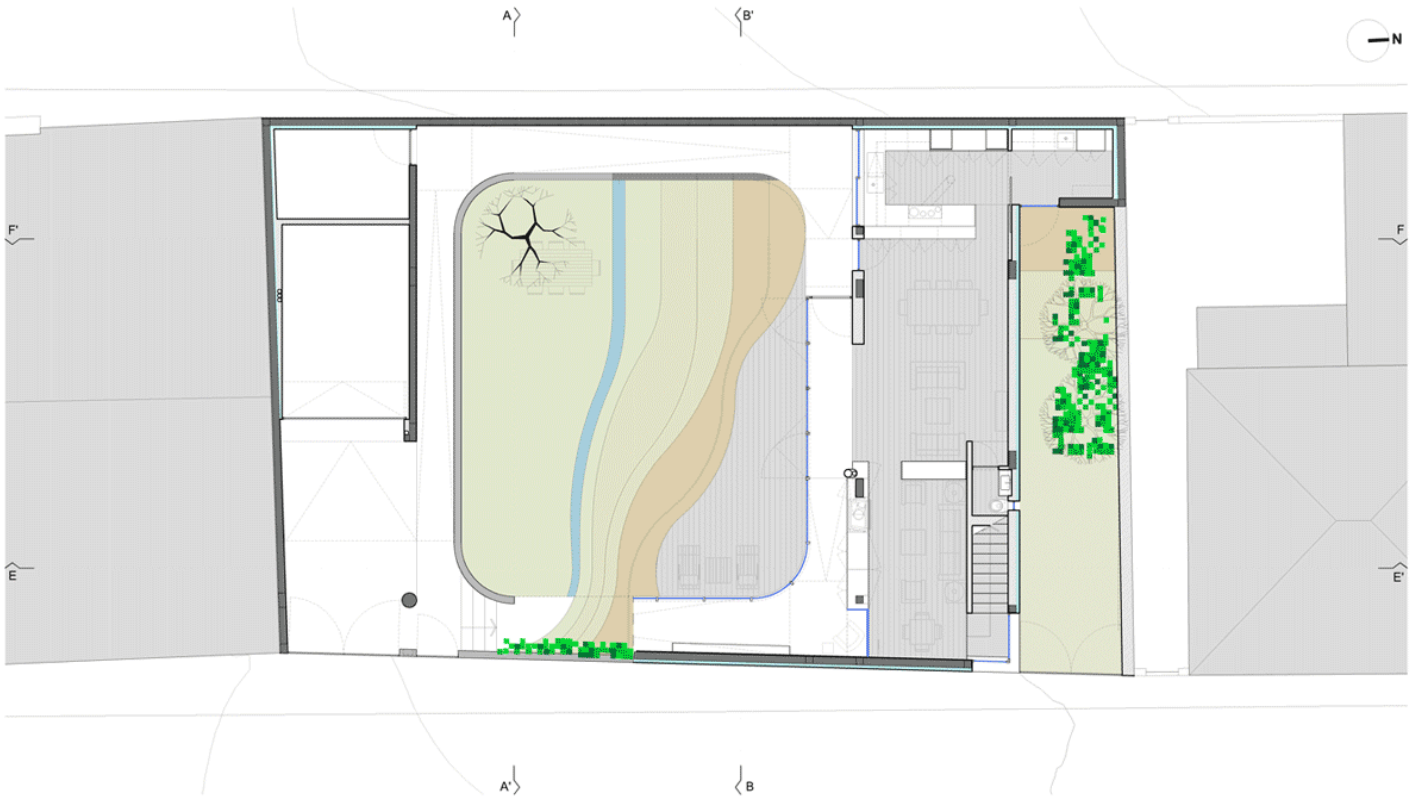


The house has a personal relationship to the client: it represents the journey of a lifetime of a family that has lived in several places around the world.

ISSN : 2575-5374

urbanNext Lexicon

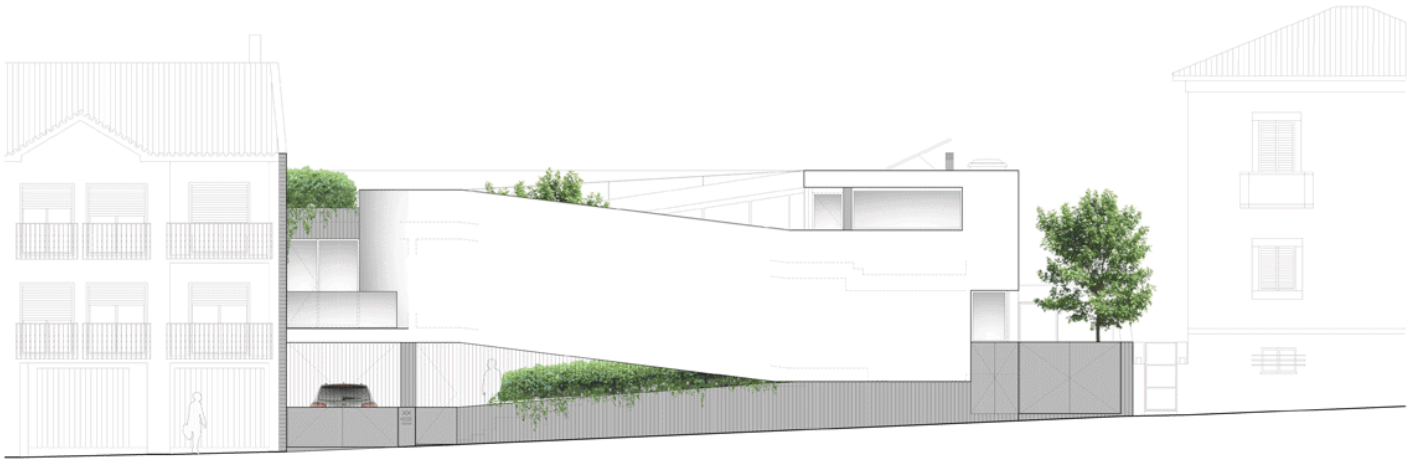
House in Estoril
<https://urbannext.net/house-in-estoril/>



Groundfloor Plan

Plans

ISSN : 2575-5374



Elevations & Sections

This idea, combined with the need to overcome the obstacle created by the blind wall of the neighboring building, resulted in an ascetic movement from the land that searches for the light and views of the valley to the east and the sea to the south.

urbanNext Lexicon

House in Estoril

<https://urbannext.net/house-in-estoril/>



ISSN : 2575-5374

urbanNext Lexicon

House in Estoril

<https://urbannext.net/house-in-estoril/>



ISSN : 2575-5374

urbanNext Lexicon

House in Estoril

<https://urbannext.net/house-in-estoril/>



This *promenade* around the patio runs through different moments of the house: the ground floor patio, the social area (living room, dining room and kitchen) , private area (rooms and offices) and a terrace, including a rooftop garden.

ISSN : 2575-5374

urbanNext Lexicon

House in Estoril

<https://urbannext.net/house-in-estoril/>



It is the extension of this route into the house that defines the entire inner and outer space. The patio originates in the continuous movement of the gallery ramp and defines two distinct altimetric volumes, separated by a half-floor height.

ISSN : 2575-5374

urbanNext Lexicon

House in Estoril

<https://urbannext.net/house-in-estoril/>



ISSN : 2575-5374

urbanNext Lexicon

House in Estoril

<https://urbannext.net/house-in-estoril/>



ISSN : 2575-5374

urbanNext Lexicon

House in Estoril

<https://urbannext.net/house-in-estoril/>



ISSN : 2575-5374

urbanNext Lexicon

House in Estoril

<https://urbannext.net/house-in-estoril/>



ISSN : 2575-5374

urbanNext Lexicon

House in Estoril

<https://urbannext.net/house-in-estoril/>



ISSN : 2575-5374

urbanNext Lexicon

House in Estoril

<https://urbannext.net/house-in-estoril/>



ISSN : 2575-5374

urbanNext Lexicon

House in Estoril
<https://urbannext.net/house-in-estoril/>



ISSN : 2575-5374

urbanNext Lexicon

House in Estoril
<https://urbannext.net/house-in-estoril/>