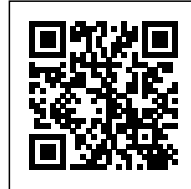




HOUSE IN BRUSSELS

Posted on September 4, 2017 by content



Categories: [Energy and sustainability](#), [Low Density](#), [Project](#), [Samyn & Partners](#)

Tags: [Belgium](#), [Brussels](#), [Façade](#), [Green](#), [Green's potential](#), [Housing](#), [Project](#), [Residential](#), [Singular Housing](#), [Vegetation](#), [Vertical greenery](#)

urbanNext Lexicon

House in Brussels

<https://urbannext.net/house-in-brussels/>

This house for an artist includes the street level of an existing small house. It now houses the entry hall, a family room and a kitchen; the living-room and the stairway are in the extension to the building.

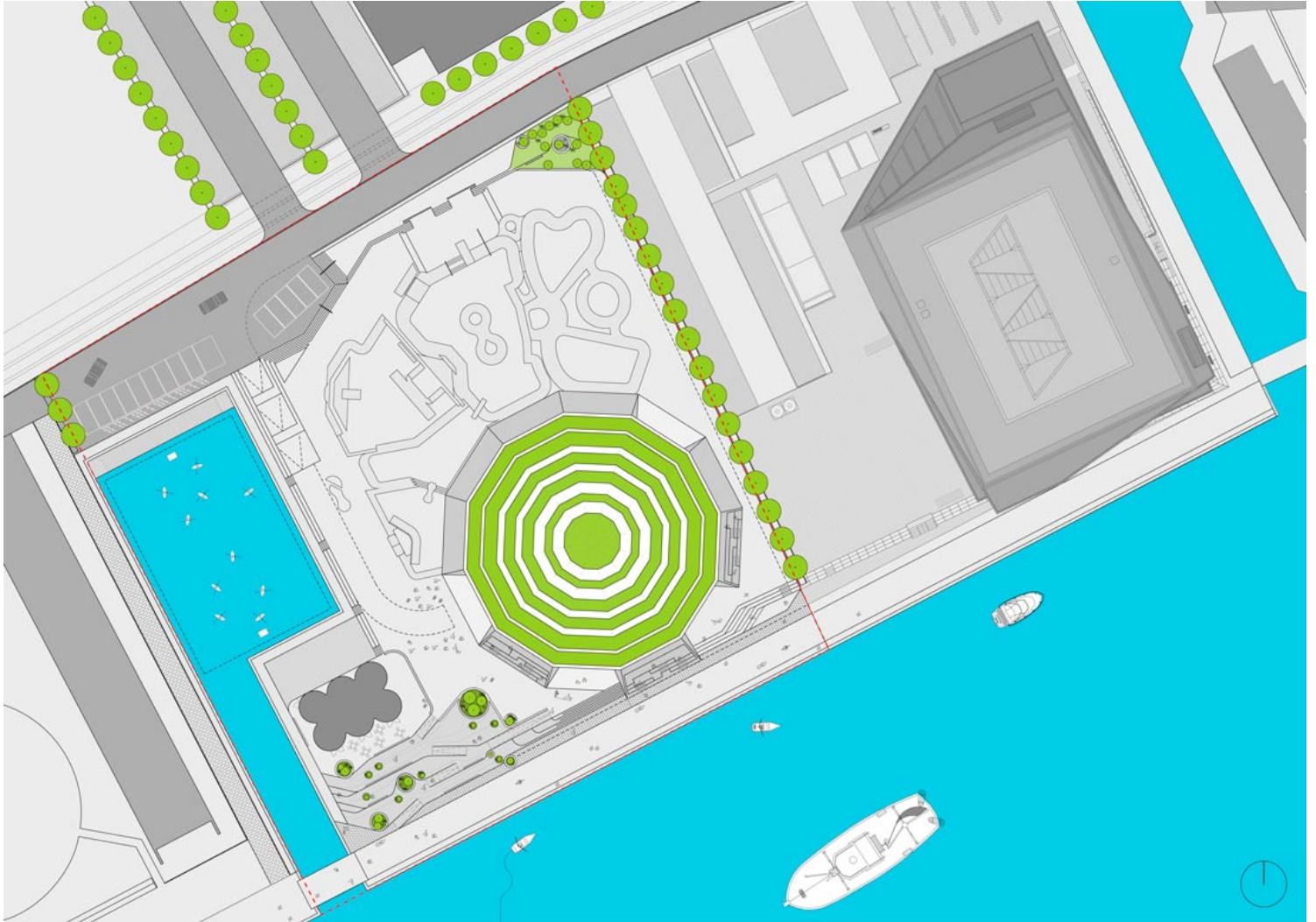


ISSN : 2575-5374

urbanNext Lexicon

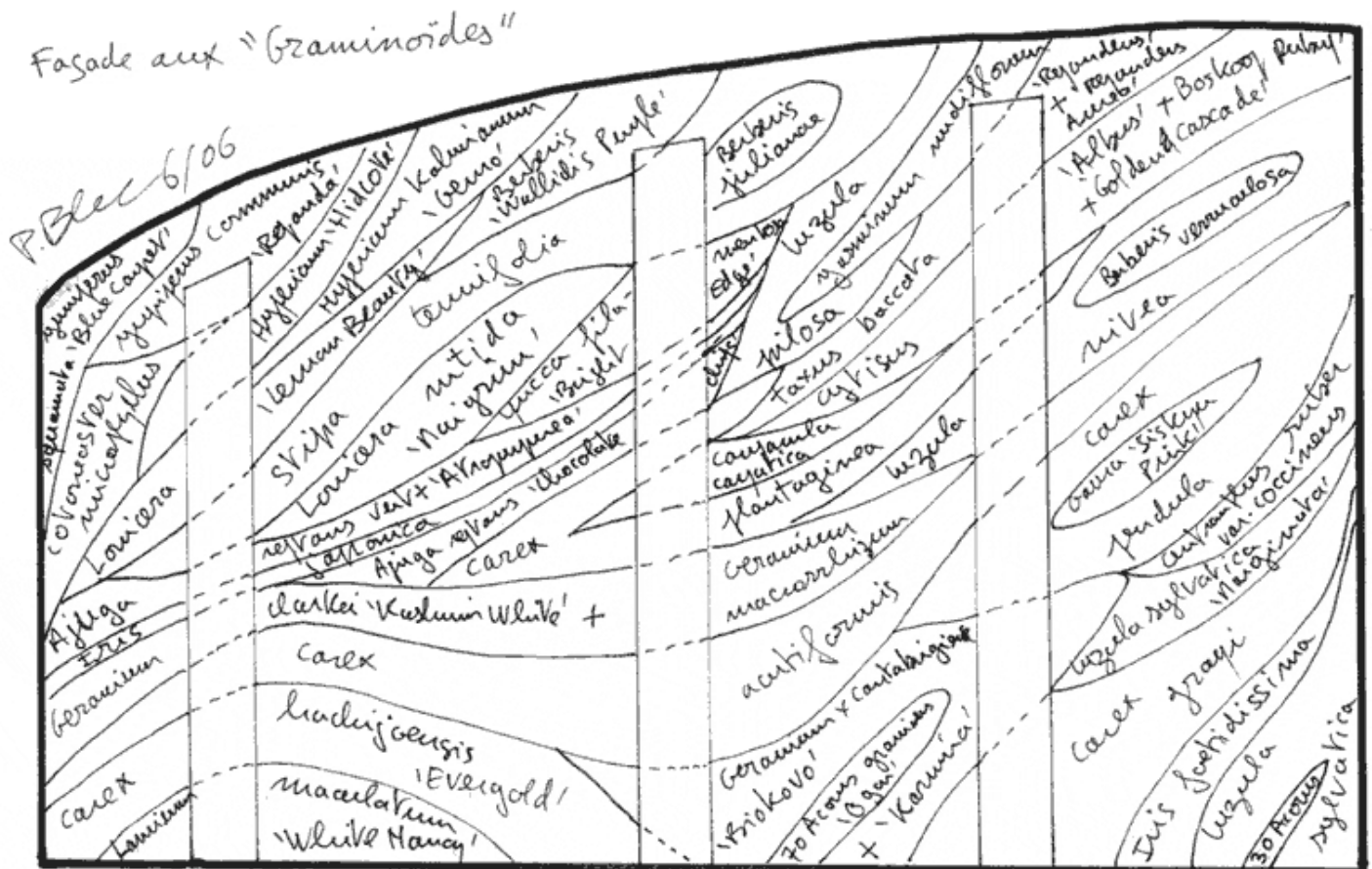
House in Brussels

<https://urbannext.net/house-in-brussels/>



Site plan

ISSN : 2575-5374



Façade vegetation



The second floor includes the master bedroom with its bathroom, as well as five children's rooms and sanitary installations. They are equipped with a mezzanine protected by textile netting that will lead to the glassed-wall façade.



The house presents curved and vegetated façades that are very private and closed to the neighbours to the north, the east and the south. In contrast, the west façade is entirely glass-walled as if it were one huge partitioned window.



Immense translucent white polyester curtains in widths of 1.6 m, suspended from the top of the structure to the ground floor, are planned to run along this great «window» to ensure shade in the summer months.

urbanNext Lexicon

House in Brussels

<https://urbannext.net/house-in-brussels/>



ISSN : 2575-5374

urbanNext Lexicon

House in Brussels

<https://urbannext.net/house-in-brussels/>

Initially conceived as a wall of ivy with a patinated copper roof, the vegetalisé façade is finally composed of a selection of exotic plants chosen by the botanical artist Patrick Blanc, and it extends to cover the roof.



We had to design the structure, the insulation, and the water-tightness of the envelope and resolve the building physics issues in order to receive the necessary support systems, irrigation and fertilisation systems for the plants, which are set into a felt support stapled to rigid PVC panels.

ISSN : 2575-5374

urbanNext Lexicon

House in Brussels

<https://urbannext.net/house-in-brussels/>



ISSN : 2575-5374

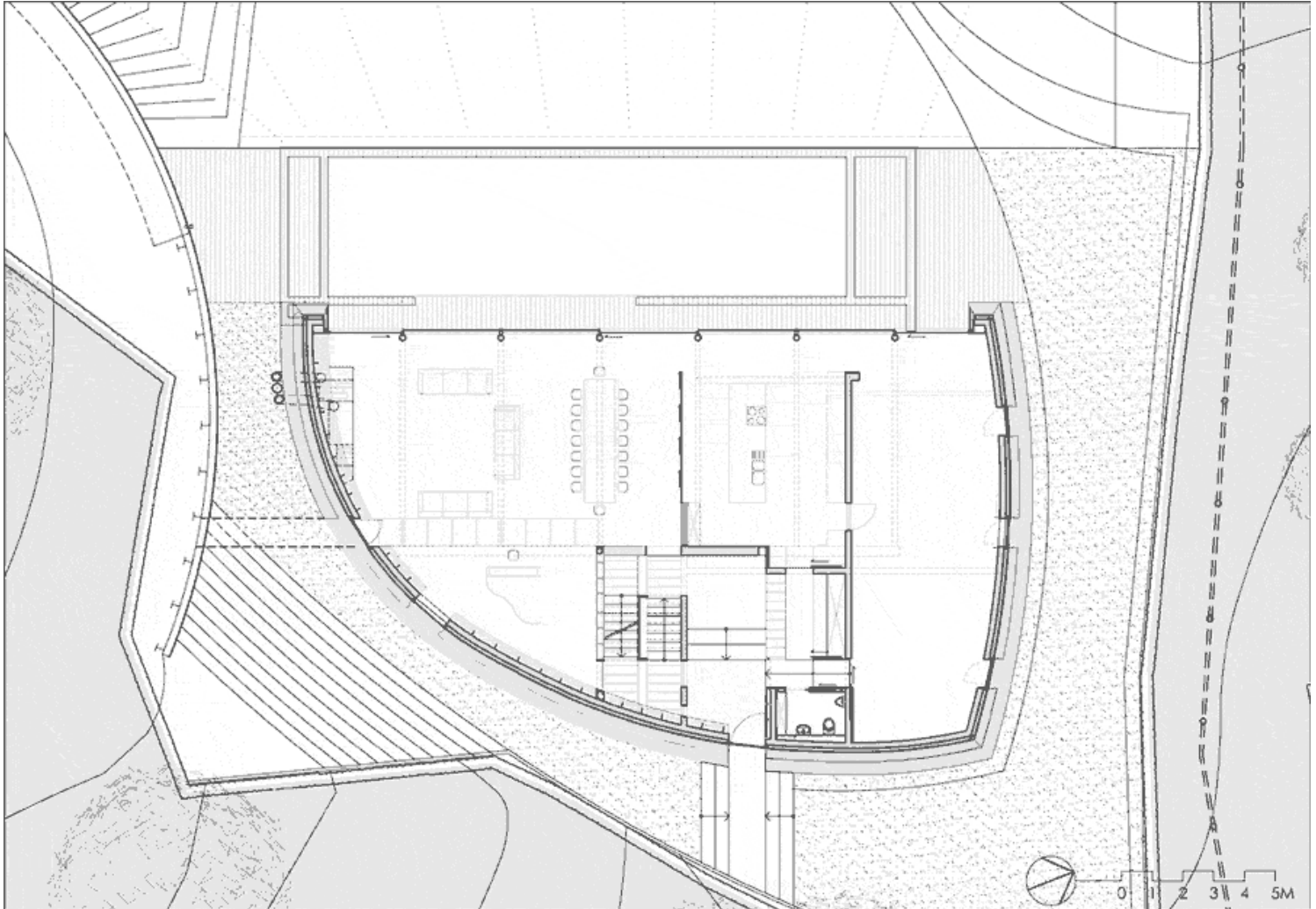
urbanNext Lexicon

House in Brussels

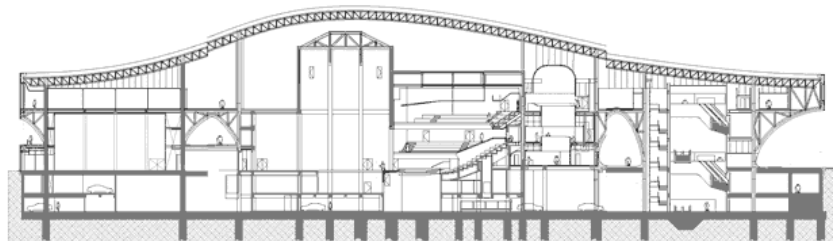
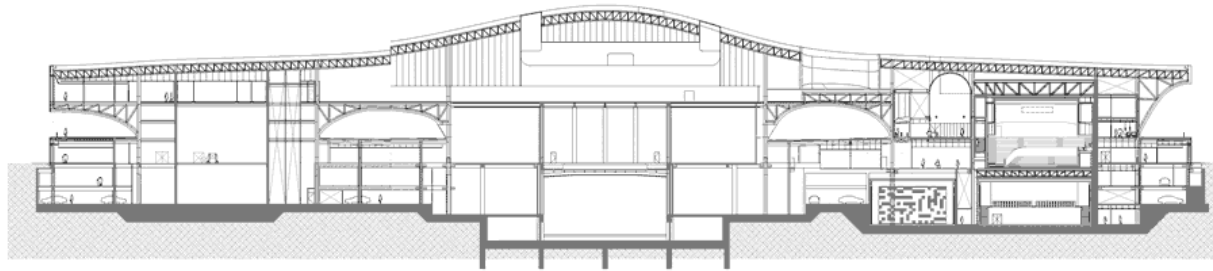
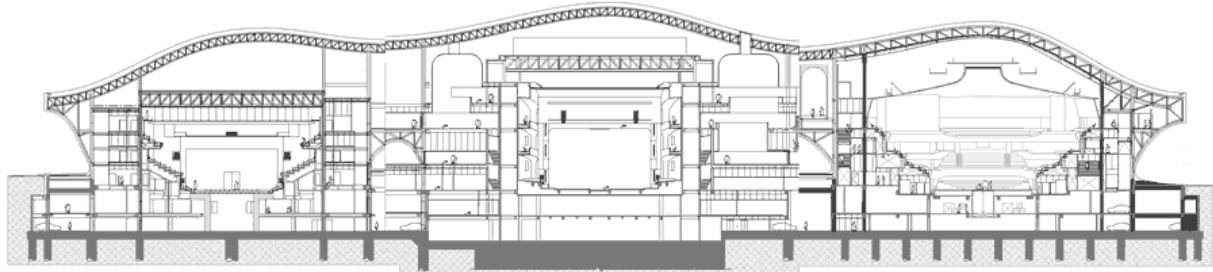
<https://urbannext.net/house-in-brussels/>



ISSN : 2575-5374



Plans



Sections

