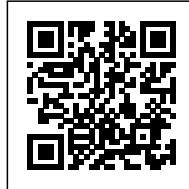




HOPE CITY

Posted on December 3, 2015 by Urban UrbanNext



Categories: [africanCities](#), [Energy and sustainability](#), [expanding design practices](#), [High Density](#), [OBR \(Paolo Brescia and Tommaso Principi\)](#), [Project](#), [Territory and mobility](#)

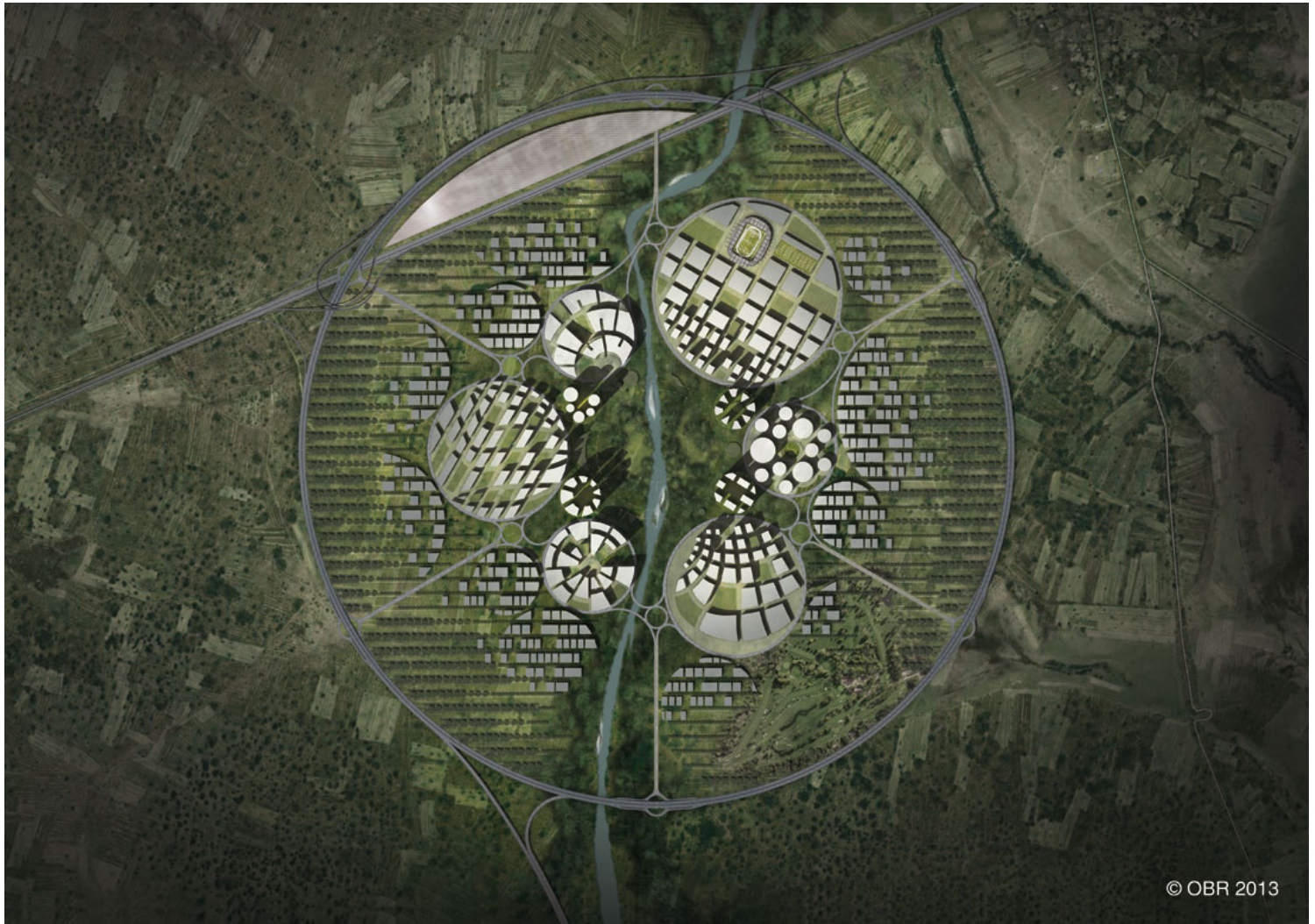
Tags: [Africa](#), [africanCities](#), [Energetic Approach](#), [Future cities](#), [Future development](#), [Ghana](#), [Multi-faceted strategy](#), [Multifunctional space](#), [On Discourse and Practices](#), [Project](#), [Social city](#), [Social cohesion](#), [Social commitment](#), [Social culture](#), [Territorial Approach](#), [Urban planning](#), [Utopian practices](#)

urbanNext Lexicon

HOPE City

<https://urbannext.net/hope-city/>

HOPE City - Home Office People Environment - is a major mixed-use development, incorporating high quality residential, business, leisure, retail, hospitality, educational, cultural and recreational uses.



The project arises over an area of 400 hectares including a mixed functional programme of about 3 million sqm of Gross Floor Area, hosting more than 65,000 citizens.

HOPE City is designed by the Italian architectural firm Open Building Research (OBR, Paolo Brescia and Tommaso Principi) in coordination with an international team of experts in engineering,

urbanNext Lexicon

HOPE City

<https://urbannext.net/hope-city/>

economy, finance, mobility and environment. This project is part of the national development policy aiming to transform Ghana into a knowledge-society, a first choice for international investors and an active player in the global economy.



Despite the traditional leading sectors of the country, Information and Communication Technologies are seeing a strong development. In this sense, HOPE City is a new international polarity. It is the most sustainable real estate development in Ghana and a milestone project for Africa.

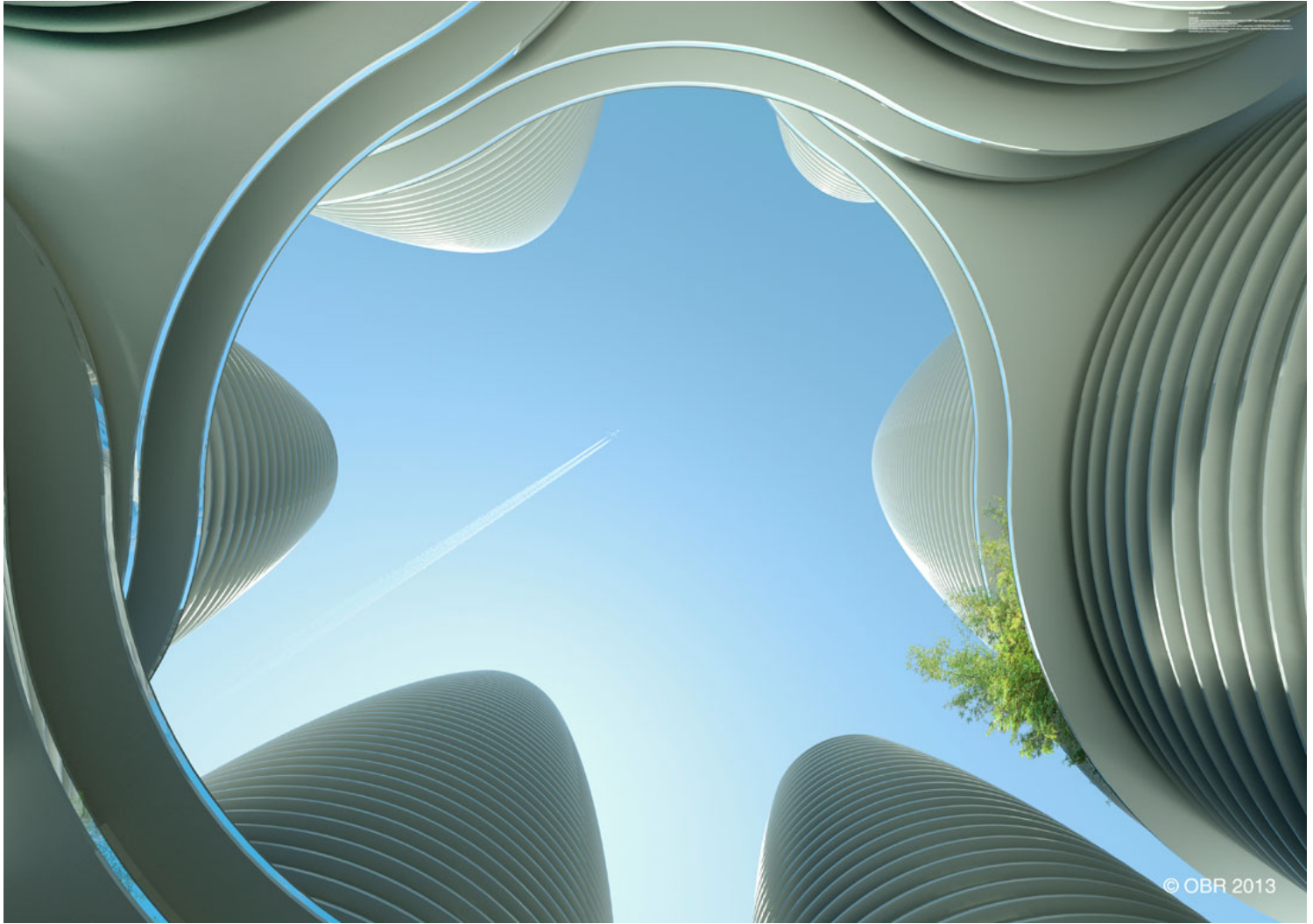
HOPE City is not only a new technological hub, but also a completely new city, which is also a new

urbanNext Lexicon

HOPE City

<https://urbannext.net/hope-city/>

worldwide cultural anchor, attracting international tourists, investors and trades, by hosting the largest Pan-African Contemporary Art Foundation and the Science Centre.



The design investigates an alternative to the typical campus scheme, where single buildings are dedicated to specific functions, toward a new urban centrality with the same functional and social complexity to the city.

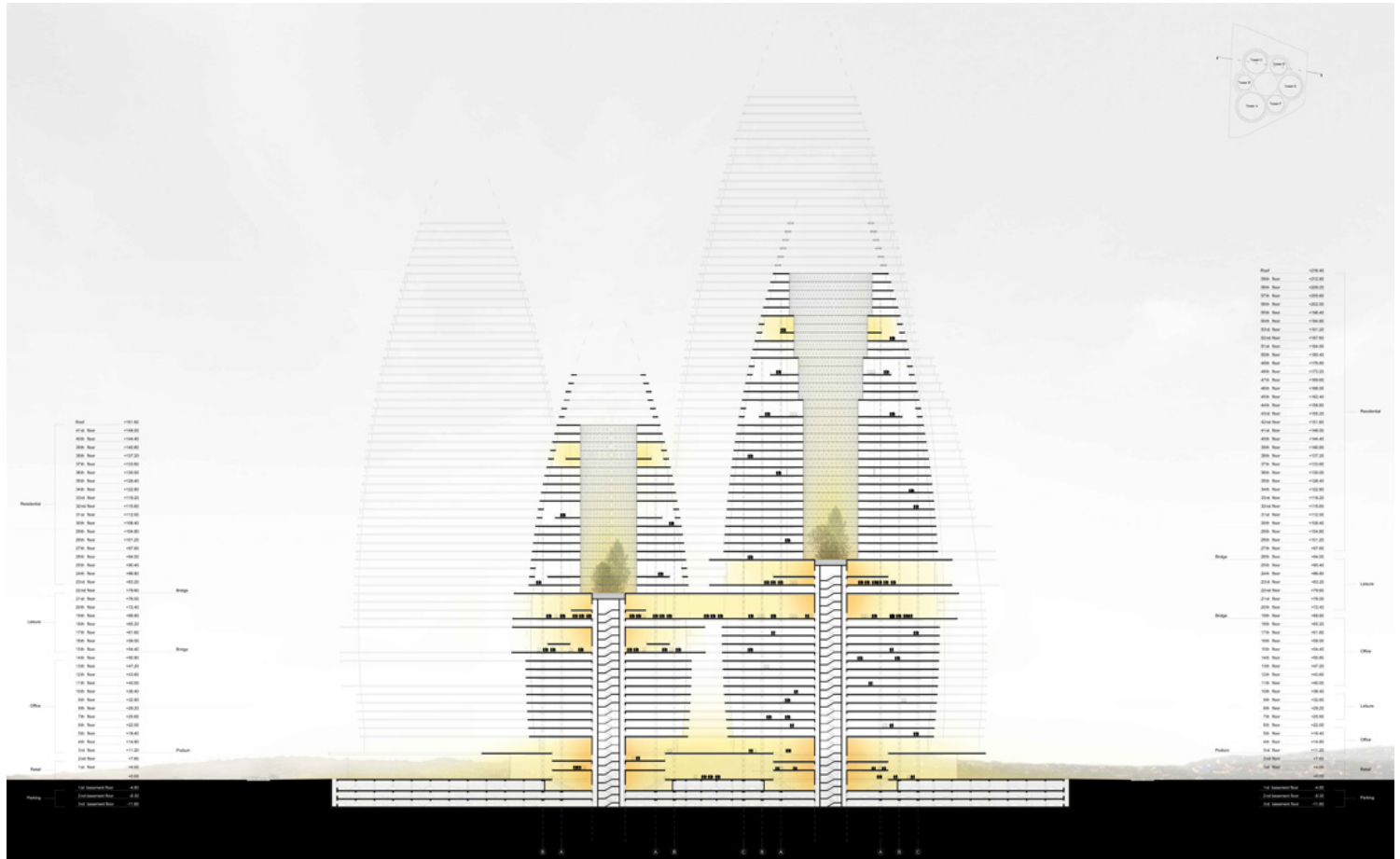
The towers are not a series of separated objects in the landscape, but define together a unique compound as a new urban polarity in the widespread cityscape, creating a very effective urban life

ISSN : 2575-5374

urbanNext Lexicon

HOPE City
<https://urbannext.net/hope-city/>

based on easy and sustainable interconnectivity and visual-physical communication between people.

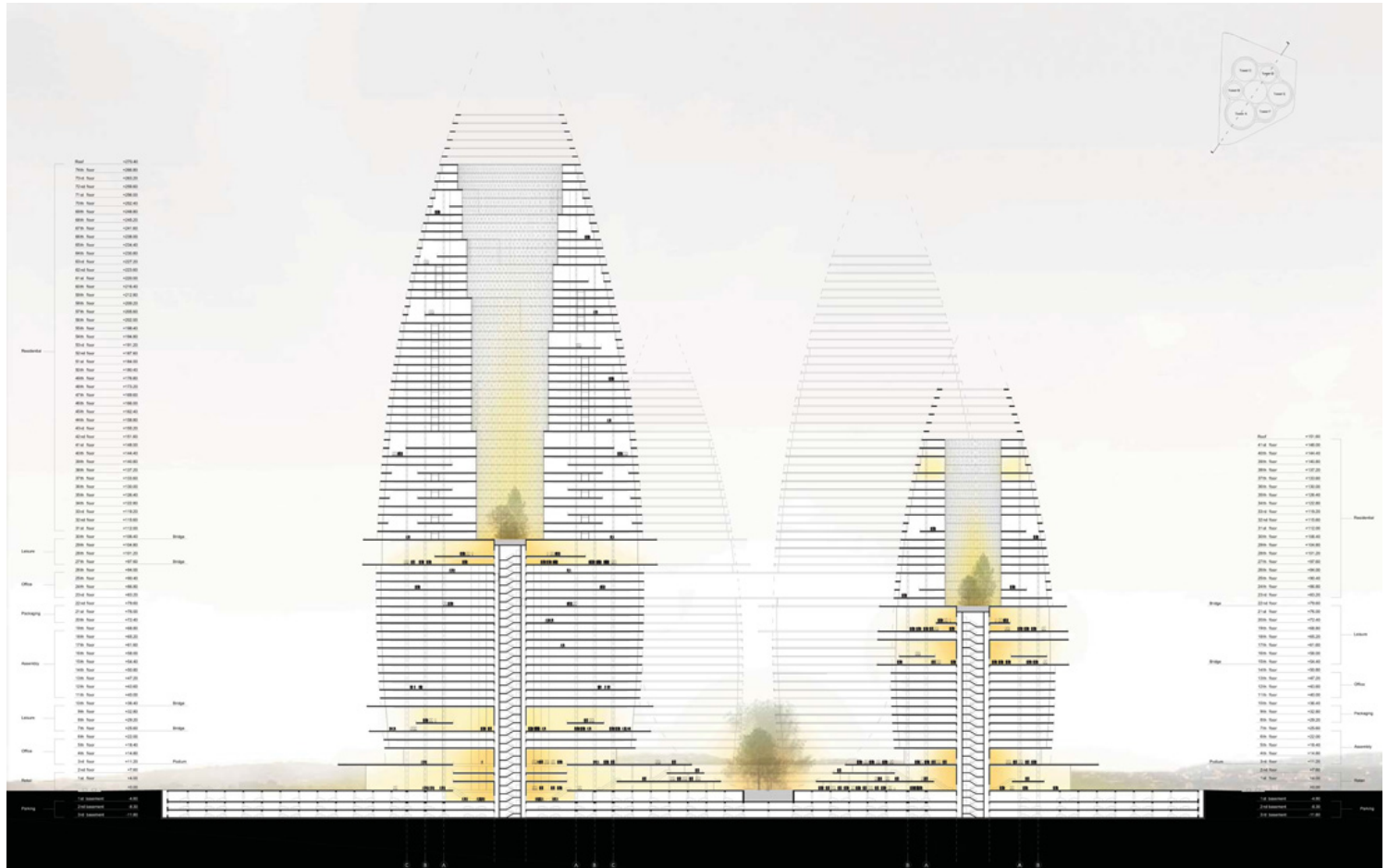


Section

ISSN : 2575-5374

urbanNext Lexicon

HOPE City
<https://urbannext.net/hope-city/>



Section

The clusters are composed to recreate the typical Ghanaian urban aggregation, which generates an inner space for the community. HOPE city is intended to promote - through Architecture - the sense of Community, sharing common values in common space.

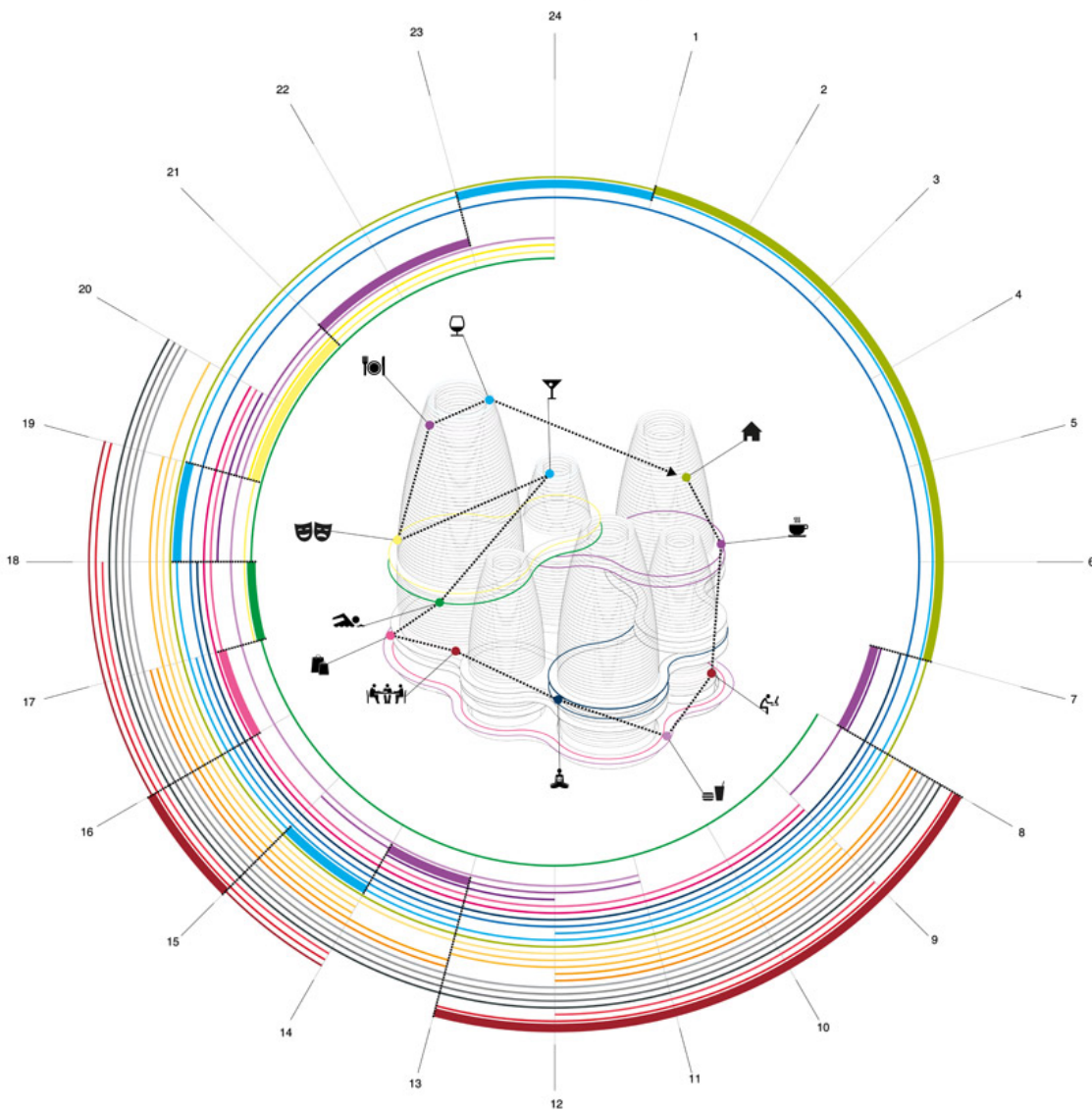
HOPE City is the opportunity to demonstrate how urban planning and business capacities can merge together in a sustainable project, while still respecting the local environment, society, culture and traditions in a contemporary way.

ISSN : 2575-5374

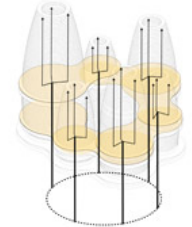
urbanNext Lexicon

HOPE City
<https://urbannext.net/hope-city/>

INTERCONNECTIVITY: a day in HOPE city



CONNECTIONS



PROGRAM



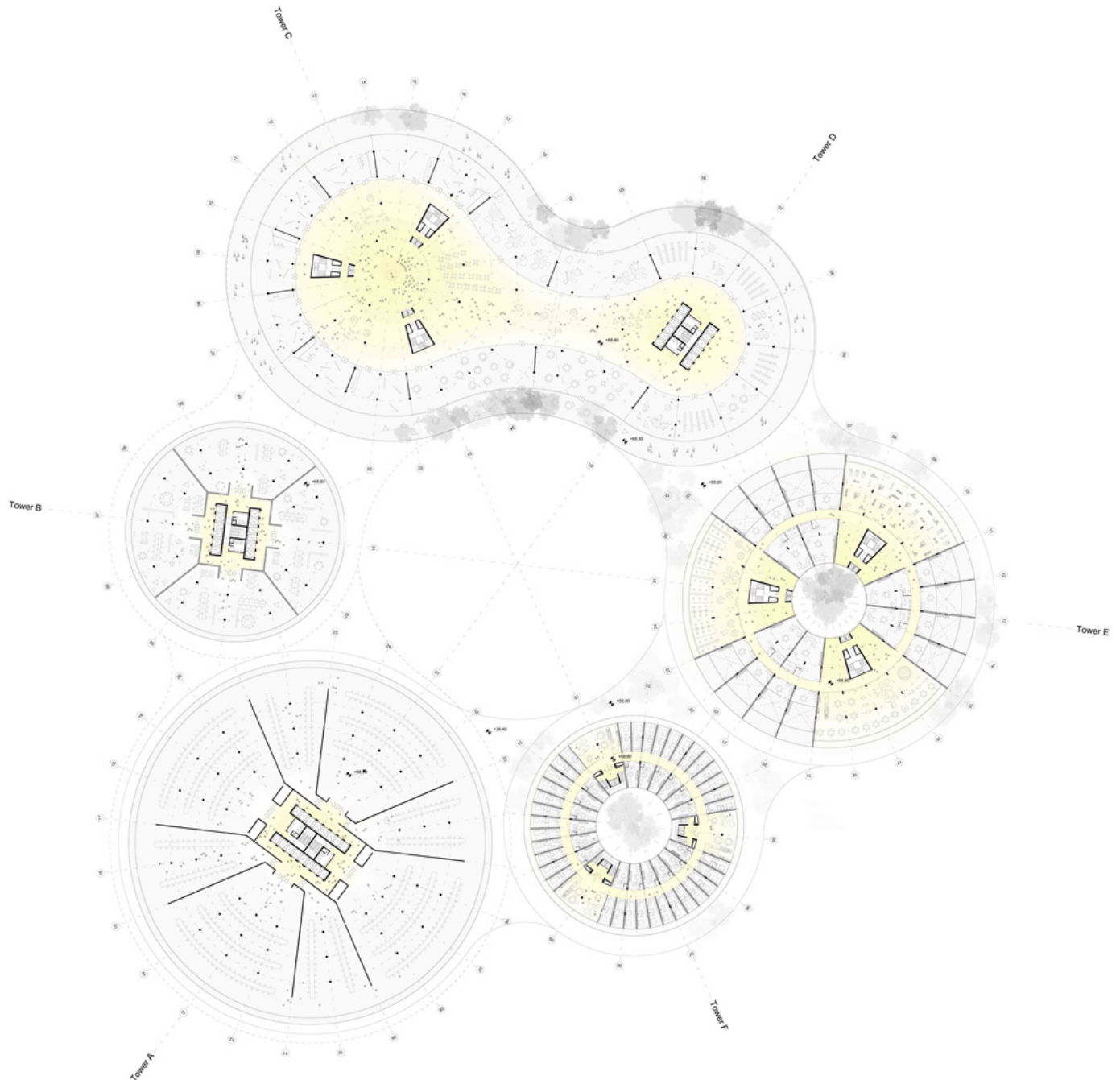
1. Administration			
• Boardroom	1,000 people	10 signposts	10,000 sqm
• Executive	500 people	20 signposts	10,000 sqm
• Reception	50 people	20 signposts	1,000 sqm
Distribution (20%)			5,000 sqm
Total	1,550 people		26,000 sqm
2. Industry			
• Fabrication	7,000 people	7 signposts	49,000 sqm
• Production	8,000 people	7 signposts	56,000 sqm
• Assembly	13,000 people	7 signposts	91,000 sqm
• Packaging	5,000 people	7 signposts	35,000 sqm
Distribution (20%)			49,000 sqm
Total	38,000 people		279,000 sqm
3. Research			
• R&D Research & Development	2,000 people	10 signposts	20,000 sqm
• R&D Research & Development management	500 people	10 signposts	10,000 sqm
• University Students	5,000 people	7 signposts	35,000 sqm
• University Professors	100 people	10 signposts	1,000 sqm
• University Staff	50 people	5 signposts	250 sqm
Distribution (20%)			10,500 sqm
Total	7,650 people		76,500 sqm
4. Residences			
• 11 (Single room accommodation)	20,000 units	24 signposts	400,000 sqm
• 12 (Family accommodation)	2,000 units	52 signposts	104,000 sqm
• 13 (Family accommodation)	200 units	148 signposts	54,000 sqm
• 14 (Executive special guests)	10 units	156 signposts	1,560 sqm
Distribution (20%)			127,560 sqm
Total	22,010 units		707,060 sqm
5. Facilities			
• Gym	200 rooms	50 signposts	10,000 sqm
• Bar	100 rooms	10 signposts	1,000 sqm
• Hospital	100 beds	100 signposts	25,000 sqm
• Social Activities (theatre, restaurant, & so)			1,000 sqm
Total	1,000 people		37,000 sqm
6. Commercial spaces			
• R&D Office, warehouse, etc.	200 units	70 signposts	5,000 sqm
• Shop	200 units	70 signposts	4,000 sqm
Distribution (20%)			10,000 sqm
Total	300 people		24,000 sqm
7. Catering			
• Dining hall (2 times)	20,000 people	2 signposts	40,000 sqm
• Restaurants (200 people)	5 units	700 signposts	5,000 sqm
• Fast food	10 units	300 signposts	2,000 sqm
Distribution (10%)			4,000 sqm
Total	30,000 people		51,000 sqm
8. Cinema & Auditorium			
• Cinema (20%)	5 cinemas	400 signposts	5,000 sqm
• Auditorium & Stage	500 people	2 signposts	500 sqm
Distribution (10%)			5,500 sqm
Total	500 people		10,500 sqm
9. Underground parking (2 levels)			
• Parking capacity	5,000 cars	25 signposts	100,000 sqm
Distribution (10%)			10,000 sqm
Total	30 people		110,000 sqm
10. Outdoor leisure			
• Swimming pool	5,000 people		5,000 sqm
• Activity field	5,000 people		5,000 sqm
• Golf course (practice)	5,000 people		5,000 sqm
• Green	5,000 people		5,000 sqm
Total	20,000 people		20,000 sqm
Security			
• Security	200 people		200 people
Gross Floor Area			1,375,000
Parking			100,000
Services (20%)			140,000
Total Built Surface			1,615,000
Total estimated people	55,000 people		

Interconnectivity: a Day in HOPE City

ISSN : 2575-5374

urbanNext Lexicon

HOPE City
<https://urbannext.net/hope-city/>



ISSN : 2575-5374

Plan

HOPE City will be a site sensitive dynamic organism, which will create an urban effect, merging an international lifestyle with African traditions.

It will be more than a campus, in which single buildings are dedicated to specific functions. It will be a city, in which there is a synergy between different functions and different classes, ethnic groups and heterogeneous tastes that come together. This approach will activate social interactions and a more fluid socialisation between people.

It will be a new city with a strong identity, promoting – through Architecture – the sense of belonging to a new Community, sharing common values in common spaces.

For this reason, the design of HOPE City is developed by OBR (Paolo Brescia and Tommaso Principi) to be unique, iconic, environmentally sustainable and socially attractive, arranged according to landscape criteria, including the tallest tower of Africa.

urbanNext Lexicon

HOPE City
<https://urbannext.net/hope-city/>



© OBR 2013

ISSN : 2575-5374

urbanNext Lexicon

HOPE City
<https://urbannext.net/hope-city/>

ISSN : 2575-5374

