



GREEN CORNER BUILDING: THE FAÇADE AS THE MAIN SPATIAL ELEMENT

Posted on September 1, 2021 by martabuges



Categories: [Designing Matter](#), [Middle Density](#), [Project](#), [Studio Anne Holtrop](#), [Technology and fabrication](#)

Tags: [Bahrain](#), [Concrete](#), [Design strategies](#), [Façade](#), [Muharraq](#), [Performative Envelope](#), [Project](#), [Spatiality](#), [Stone](#), [Structure](#), [Tectonics](#)

urbanNext Lexicon

Green Corner Building: The Façade as the Main Spatial Element

<https://urbannext.net/green-corner-building/>

The building's floor plan consists of two identical sized rooms and a core in between. The plan is very shallow in depth and has one long main façade with two short end façades. With the shallow depth of the plan, the façade itself is the main spatial element.



ISSN : 2575-5374

urbanNext Lexicon

Green Corner Building: The Façade as the Main Spatial Element

<https://urbannext.net/green-corner-building/>



The façade is made out of sand casted structural wall elements with a strong relief. The elements are cast on the ground next to the building. Each cast results in a unique imprint on the element. At the windows and the corners of the building, the relief is visible, like a geological cut in the ground.

ISSN : 2575-5374

urbanNext Lexicon

Green Corner Building: The Façade as the Main Spatial Element

<https://urbannext.net/green-corner-building/>



ISSN : 2575-5374

urbanNext Lexicon

Green Corner Building: The Façade as the Main Spatial Element

<https://urbannext.net/green-corner-building/>



ISSN : 2575-5374

urbanNext Lexicon

Green Corner Building: The Façade as the Main Spatial Element

<https://urbannext.net/green-corner-building/>



On the interior the sand casting is repeated in the concrete floor slabs, which are made in the same way. Large shutters can be moved in front of the windows. The shutters (and the entrance door) are made out of sand casted aluminum with the relief facing towards the interior. Contrary to the concrete elements, the aluminum sand casts are hollow. The interior of the casts can be seen through the windows.

ISSN : 2575-5374

urbanNext Lexicon

Green Corner Building: The Façade as the Main Spatial Element

<https://urbannext.net/green-corner-building/>



ISSN : 2575-5374

urbanNext Lexicon

Green Corner Building: The Façade as the Main Spatial Element

<https://urbannext.net/green-corner-building/>

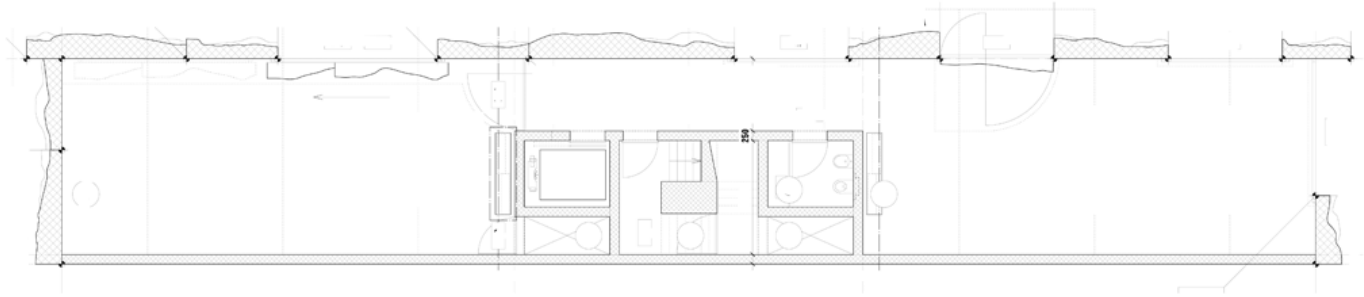


ISSN : 2575-5374

urbanNext Lexicon

Green Corner Building: The Façade as the Main Spatial Element

<https://urbannext.net/green-corner-building/>



ISSN : 2575-5374

