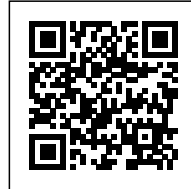




FIDALGA 727

Posted on May 20, 2016 by Urban UrbanNext



Categories: [Energy and sustainability](#), [High Density](#), [Project](#), [Southern Coexistences](#), [Technology and fabrication](#), [Tryptique](#)

Tags: [Brazil](#), [Building](#), [Building construction](#), [City dialogue](#), [Energetic Approach](#), [Façade orientation](#), [Housing](#), [Natural materials](#), [Project](#), [Raw materials](#), [São Paulo](#), [Searches on scales](#), [Technological Approach](#), [Thermal comfort](#), [Thermodynamic practices](#), [Thermodynamics](#)

urbanNext Lexicon

Fidalga 727

<https://urbannext.net/fidalga-727/>

The urban landscape of São Paulo is heavily influenced by two main characteristics that coexist independently and simultaneously. On the one hand, vertical constructions – most of them faithful to the modernist/rationalist models – which evolve randomly with the inconstant guidelines of the urban planning framework. And on the other hand, the historical and/or informal occupation of two or three floors of the residual spaces between these constructions.

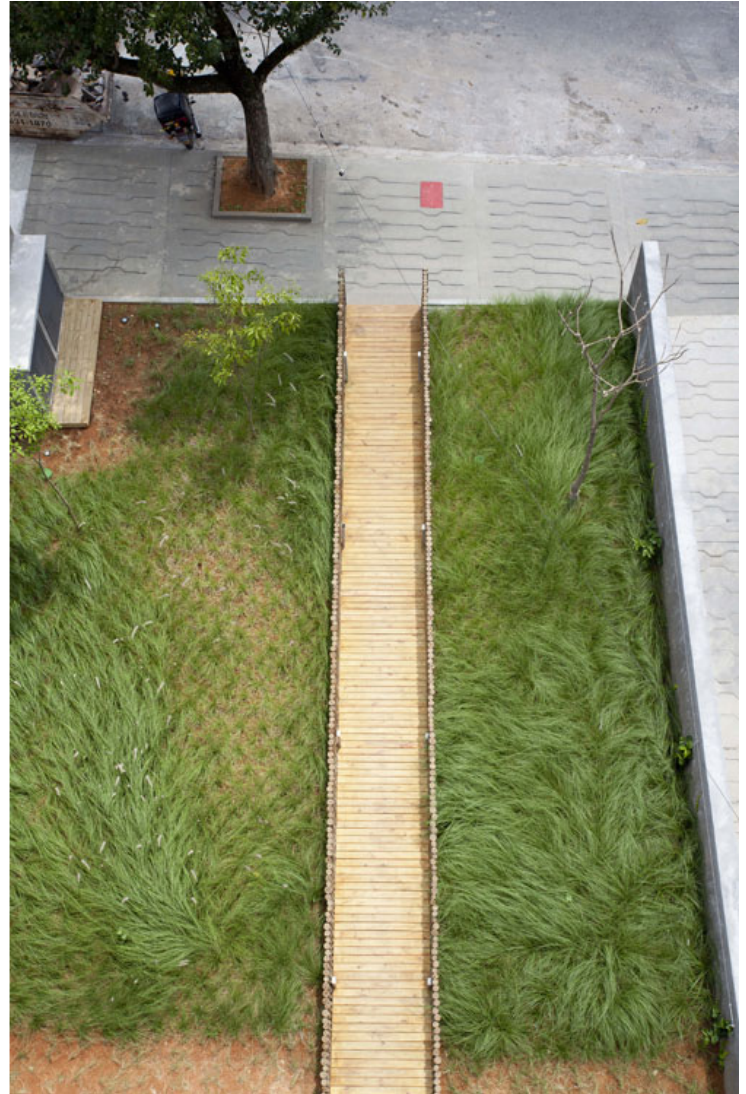


ISSN : 2575-5374

urbanNext Lexicon

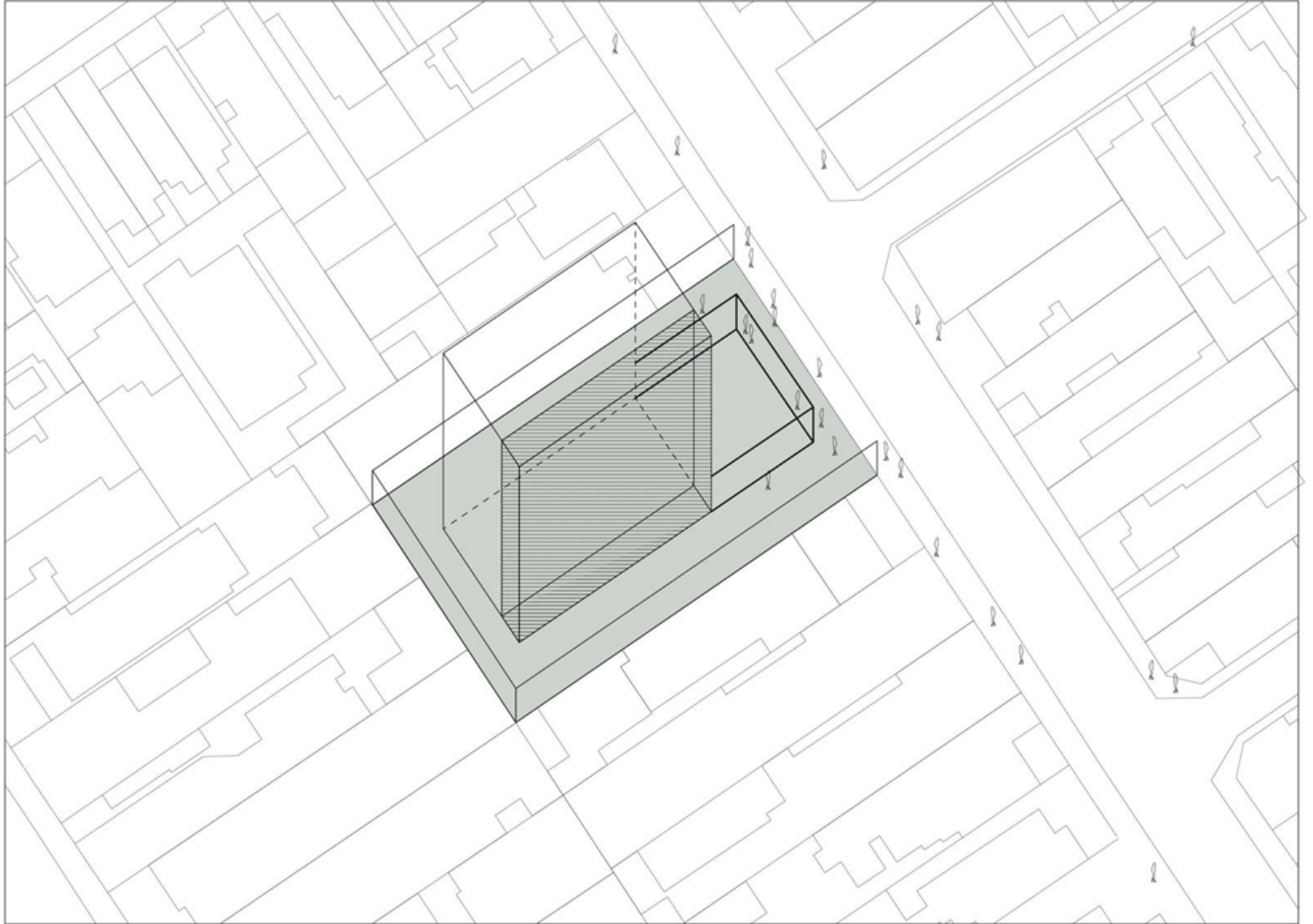
Fidalga 727

<https://urbannext.net/fidalga-727/>



The ensemble is characterized by spectacular breaks in scale and height limits, resulting in a chaotic and discontinuous urban landscape. Located in the heart of a middle class neighborhood undergoing constant change, the project – a standard housing tower – is set precisely in this context and situated on the margins of one of these permanent breaks, revealing a split panoramic skyline.

ISSN : 2575-5374

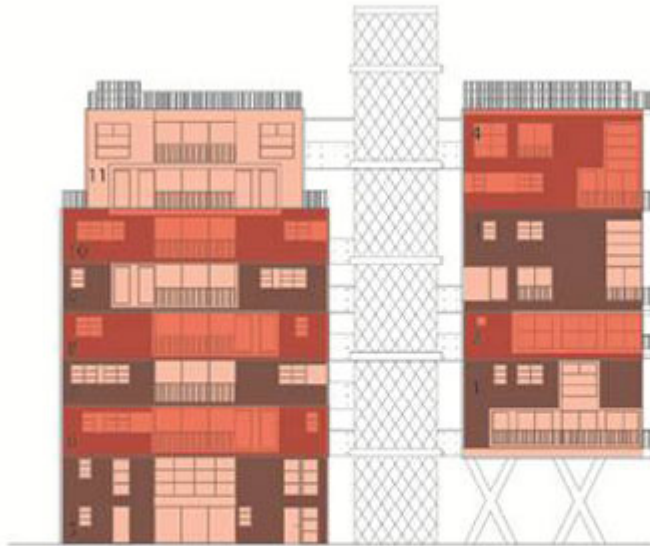


Aggregation Diagram

urbanNext Lexicon

Fidalga 727

<https://urbannext.net/fidalga-727/>



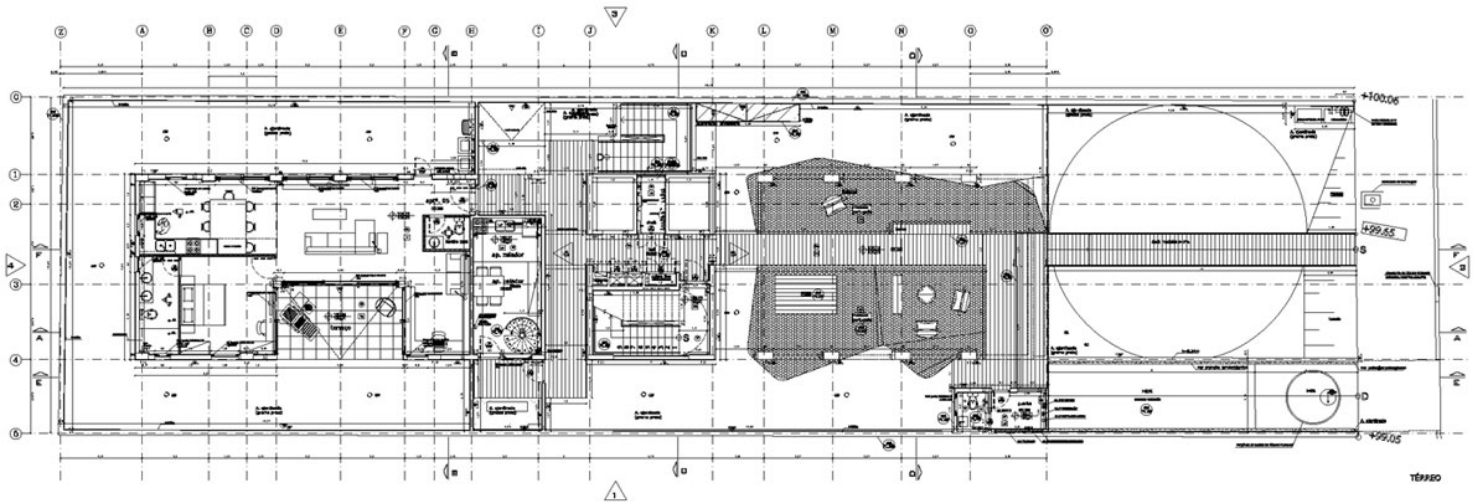
Elevation

ISSN : 2575-5374

urbanNext Lexicon

Fidalga 727

<https://urbannext.net/fidalga-727/>



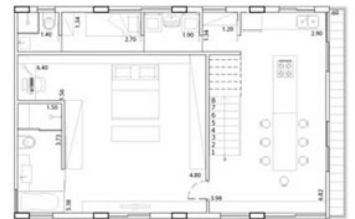
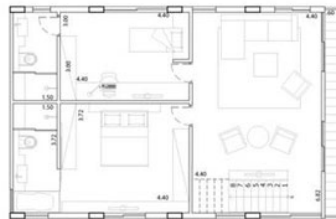
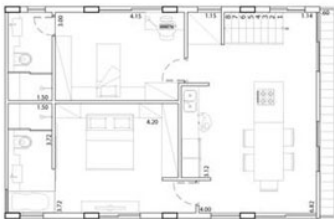
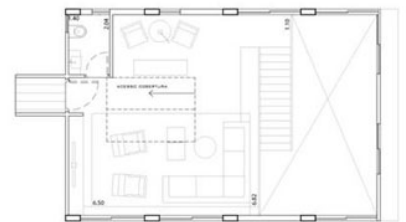
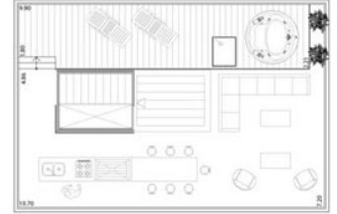
Ground Floor Plan

ISSN : 2575-5374

urbanNext Lexicon

Fidalga 727

<https://urbannext.net/fidalga-727/>



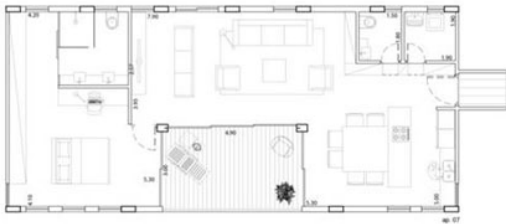
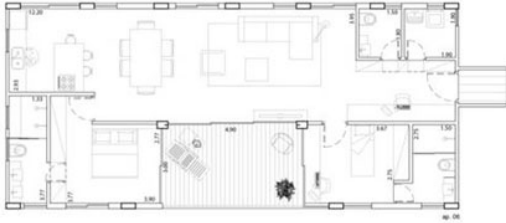
Floor Plan A

ISSN : 2575-5374

urbanNext Lexicon

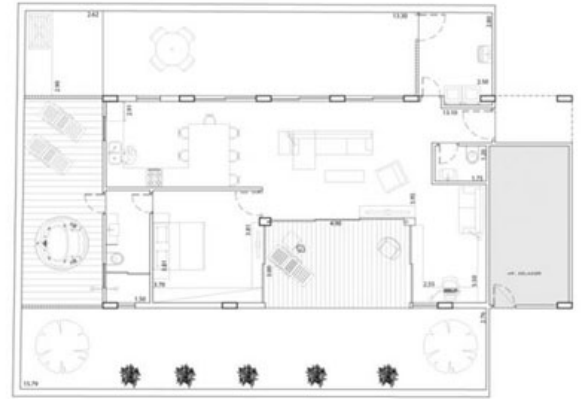
Fidalga 727

<https://urbannext.net/fidalga-727/>



Floor Plan B

ISSN : 2575-5374



Floor Plan C

This proposal is nourished by the formal and textual complexity of the site and reformulates the traditional "paulista" residence model. The fragmentation of the building's body into three parts makes for a better integration of the recreational area and the vertical / horizontal circulation spaces. A small square in the front is given back to the surrounding urban area.

urbanNext Lexicon

Fidalga 727

<https://urbannext.net/fidalga-727/>



ISSN : 2575-5374

urbanNext Lexicon

Fidalga 727

<https://urbannext.net/fidalga-727/>

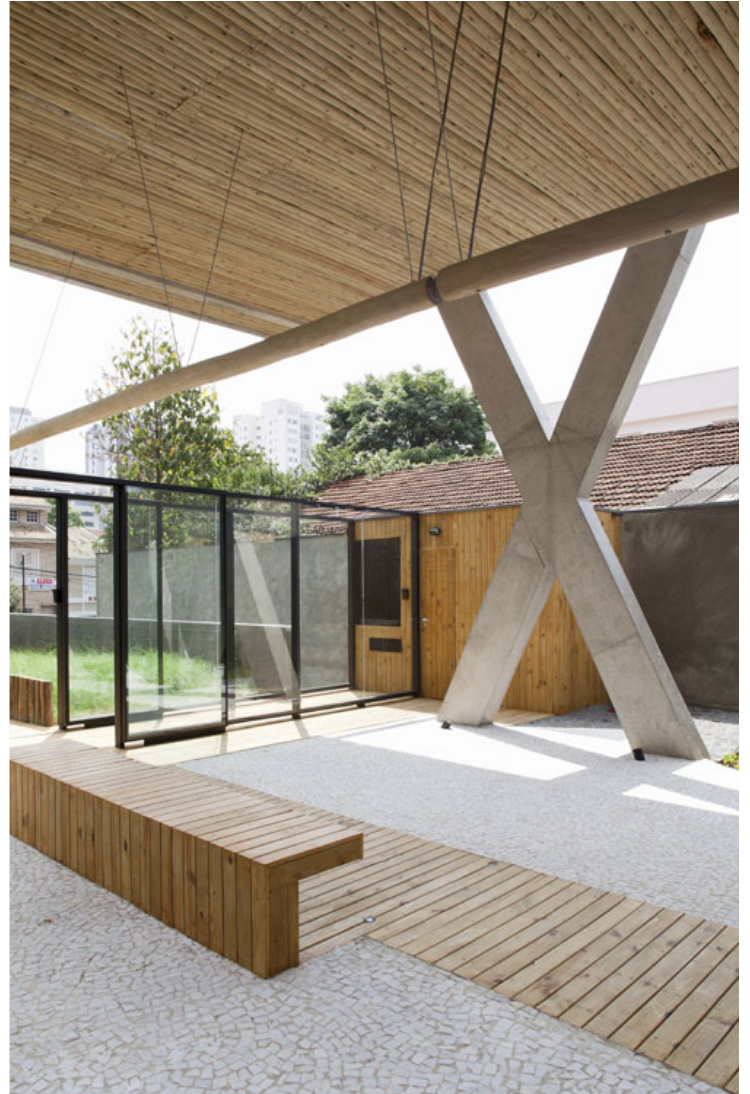


ISSN : 2575-5374

urbanNext Lexicon

Fidalga 727

<https://urbannext.net/fidalga-727/>

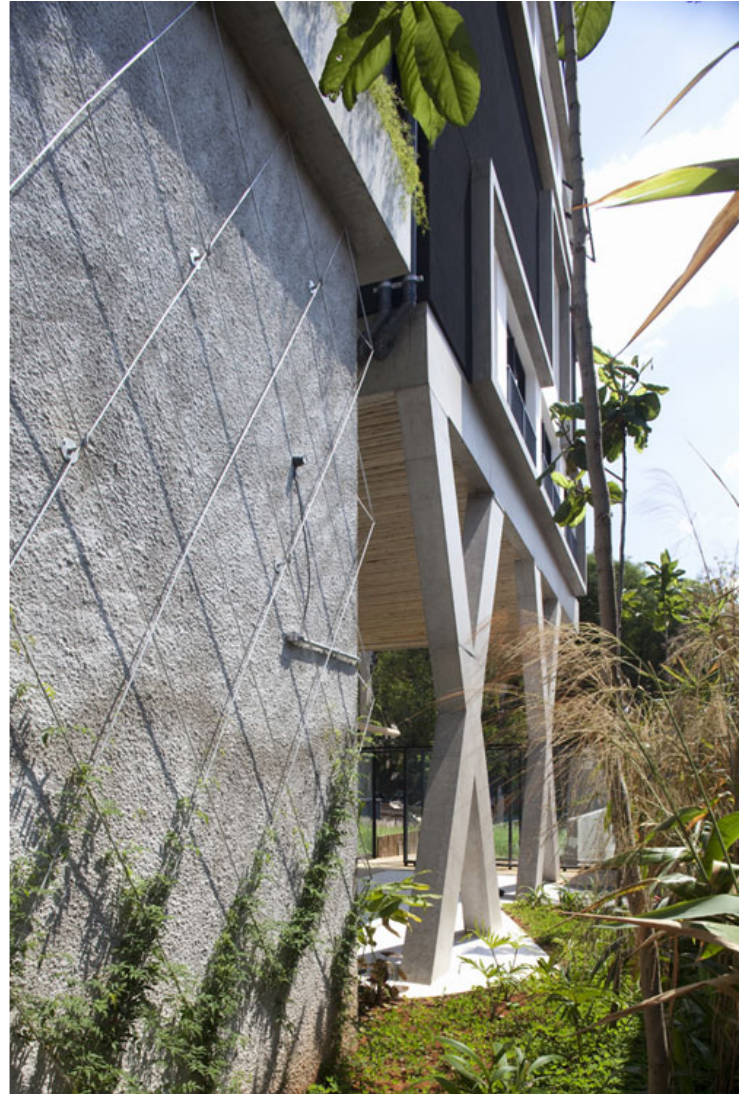


ISSN : 2575-5374

urbanNext Lexicon

Fidalga 727

<https://urbannext.net/fidalga-727/>



The housing units are stacked according to a non-linear and non-modular variation of typologies and windows, giving the building its main look, marked by the use of simple and urban materials.

ISSN : 2575-5374

urbanNext Lexicon

Fidalga 727

<https://urbannext.net/fidalga-727/>



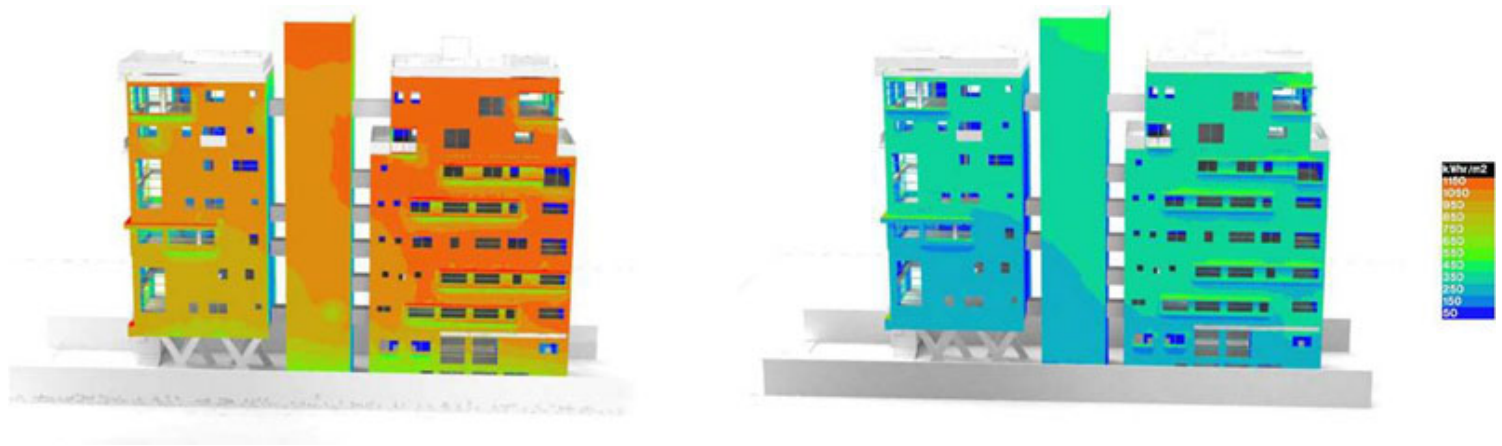
ISSN : 2575-5374



The design of the homes / apartments follows these principles:

- Individual access by external gateway.
- One apartment/home on each floor, emphasizing the 360-degree view / ventilation.
- One remarkable architectural element per apartment (double volumes, patio terrace, duplex / penthouse garden).
- Different windows in each unit.
- Open plans allowing for different internal partitions – modular hydraulic and electrical plug

distribution.



Façade Thermal Performance

