



## ERASMUS CAMPUS STUDENT HOUSING

*Posted on November 15, 2019 by martabuges*



**Categories:** [Mekanoo](#), [Middle Density](#), [Project](#), [Territory and mobility](#), [Urban Paradigms](#)

**Tags:** [Collective housing](#), [Collective identity](#), [Colour](#), [Community](#), [Context](#), [Façade](#), [Functional unit](#), [Inner courtyard](#), [Project](#), [Residential](#), [Rooftop](#), [Rotterdam](#), [The Netherlands](#)

# urbanNext Lexicon

Erasmus Campus Student Housing  
<https://urbannext.net/erasmus-campus-student-housing/>

Rotterdam has a growing demand for student housing. To address this shortage, Mecanoo was asked to design a student housing complex on a prominent location of the Erasmus campus: at the intersection of Abram van Rijckevorselweg and Burgemeester Oudlaan. The prominent corner site, while offering an opportunity to strengthen the campus's visual identity, also came with the challenges of a limited building envelope and noisy traffic.

# urbanNext Lexicon

Erasmus Campus Student Housing  
<https://urbannext.net/erasmus-campus-student-housing/>



ISSN : 2575-5374

# urbanNext Lexicon

Erasmus Campus Student Housing  
<https://urbannext.net/erasmus-campus-student-housing/>

ISSN : 2575-5374





## **Internal Street and Collective Functions**

The eight-story complex accommodates 281 studio units for international students. A central courtyard brings light and air into the heart of the building and extends as an internal street, connecting the complex with the campus's street network. On both ends of the building, this central open space leads to a generous lobby. The courtyard also provides access to individual rooms, the collective study space, a launderette, the concierge's office and bike parking.

# urbanNext Lexicon

Erasmus Campus Student Housing  
<https://urbannext.net/erasmus-campus-student-housing/>



The transparent plinth of the 25-meter-high building contains rooms with areas of between 20 and 40 square meters. These units have four-meter-tall ceilings, allowing for the addition of a mezzanine-level sleeping space with a washroom and toilet underneath. The rooms on the upper stories vary in size from 22 to 24 square meters. They are arranged on either side of a looped corridor, which has a different color pattern on each floor. The rooms can be accessed via an elevator or the staircase connected to the internal street. On the roof, a collective terrace with a wooden deck and benches offers a meeting place with a generous view of the campus, where students can enjoy a drink together, lie in the sun or organize a party.

ISSN : 2575-5374

# urbanNext Lexicon

Erasmus Campus Student Housing  
<https://urbannext.net/erasmus-campus-student-housing/>

ISSN : 2575-5374

# urbanNext Lexicon

Erasmus Campus Student Housing  
<https://urbannext.net/erasmus-campus-student-housing/>

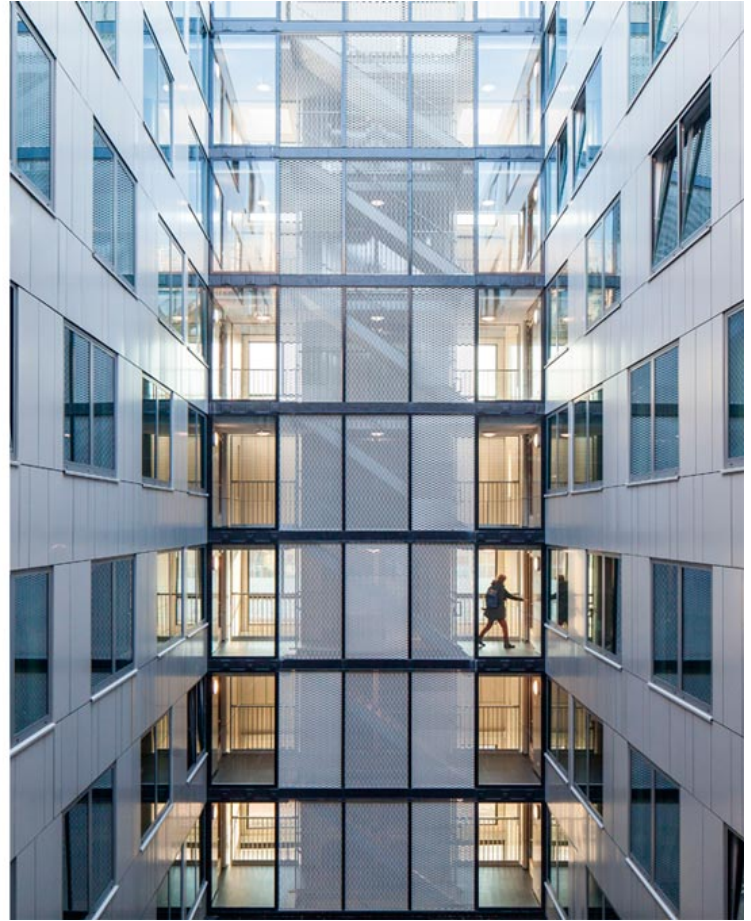
ISSN : 2575-5374



# urbanNext Lexicon

Erasmus Campus Student Housing

<https://urbannext.net/erasmus-campus-student-housing/>



## Wrapped in Gold

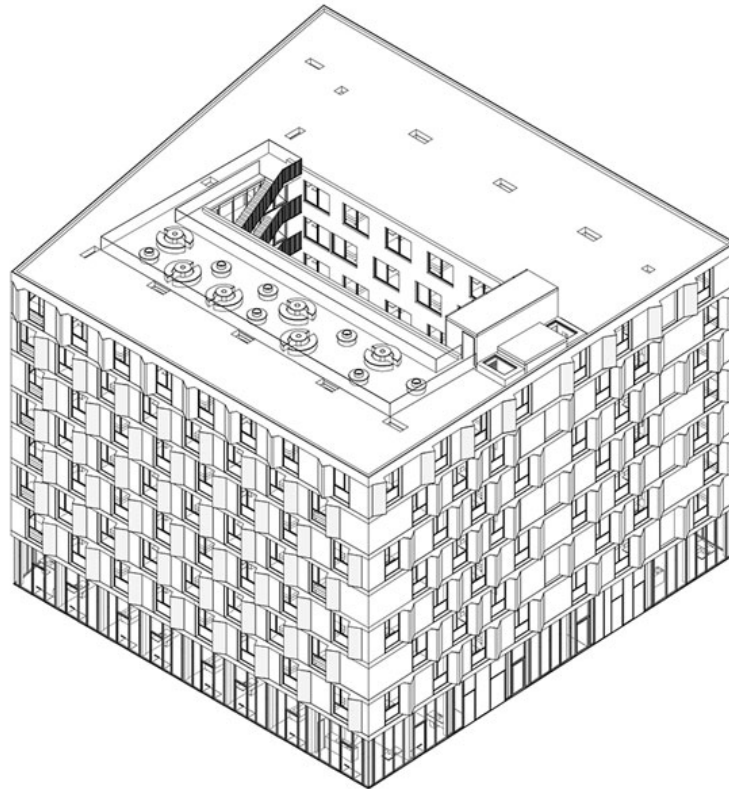
The student housing complex has a classical subdivision of plinth, body and crown. The façade is wrapped in gold-tinted aluminum panels. Changing daylight creates a play of shadows along the harmonica-like pleated façade panels, which gradually vary from gold to silver when viewed from different angles. To give the building's crown a subtle accent, the pleated pattern is reversed on the top level. Next to each window, the aluminum fold protrudes outwards, invisibly integrating acoustically attenuated ventilation. That way, fresh air can enter, while traffic noise is blocked. The entire building is circular and was built within one year, which was made possible by prefabricating the structure and façade elements, including the windows. Thanks to the efficient construction process, the building was ready to accommodate new students by the beginning of the academic

ISSN : 2575-5374

# urbanNext Lexicon

Erasmus Campus Student Housing  
<https://urbannext.net/erasmus-campus-student-housing/>

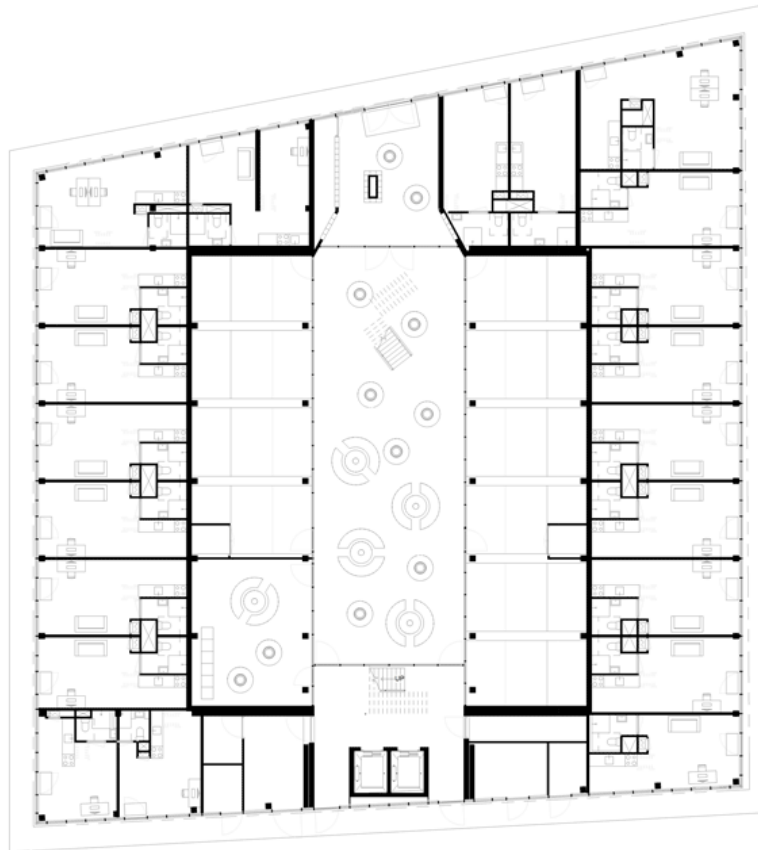
year.



ISSN : 2575-5374

# urbanNext Lexicon

Erasmus Campus Student Housing  
<https://urbannext.net/erasmus-campus-student-housing/>



ISSN : 2575-5374

# urbanNext Lexicon

Erasmus Campus Student Housing  
<https://urbannext.net/erasmus-campus-student-housing/>

ISSN : 2575-5374