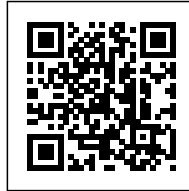




## ENSAE PARISTECH: CAPTURING THE LANDSCAPE

*Posted on September 17, 2019 by martabuges*



---

**Categories:** [Middle Density](#), [Project](#),  
[Technology and fabrication](#), [Urban Paradigms](#)

**Tags:** [Architecture&nature](#), [Building construction](#), [Educational Building](#), [Flexibility](#),  
[France](#), [Landscape](#), [Palaiseau](#), [Project](#), [Steel](#),  
[Structural grid](#), [Urban Dialogue](#), [Working Space](#)

# urbanNext Lexicon

ENSAE Paristech: Capturing the Landscape  
<https://urbannext.net/ensae-paristech/>

When we discovered the immense sky and the plateau devoid of physical constraints, we sought, by a simple form and an abstract writing, to capture the landscape. The vibrating proximity of the edge of the woods revealed an intuition related to the material: it was necessary, in this country site, to touch the ground gently. To that end, we chose to design the project as a steel exoskeleton.



ISSN : 2575-5374



# urbanNext Lexicon

ENSAE Paristech: Capturing the Landscape  
<https://urbannext.net/ensae-paristech/>



Inscribed in a 80 m x 80 m square, the building is an open, welcoming and urban place, but it borrows the notion of an interior landscape from the shape of the cloister. The continuous 3.05 m x 2.10 m grid made with HEB profiles measuring 24 cm x 24cm, weaves the entire project and draws its architecture.

ISSN : 2575-5374

# urbanNext Lexicon

ENSAE Paristech: Capturing the Landscape  
<https://urbannext.net/ensae-paristech/>



ISSN : 2575-5374



# urbanNext Lexicon

ENSAE Paristech: Capturing the Landscape  
<https://urbannext.net/ensae-paristech/>



With no intermediate support points, metal beams (PRS) with a span of 15 m connect one façade to the other. They are connected to the exostructure by reduced steel connectors of 15 cm x 15 cm to limit their impact.

The structural grid was built like a giant Meccano structure and, appearing on the horizon like a spidery figure, it emphasizes the mainly dry nature of the site.

ISSN : 2575-5374

# urbanNext Lexicon

ENSAE Paristech: Capturing the Landscape  
<https://urbannext.net/ensae-paristech/>



ISSN : 2575-5374

# urbanNext Lexicon

ENSAE Paritech: Capturing the Landscape  
<https://urbannext.net/ensae-paritech/>



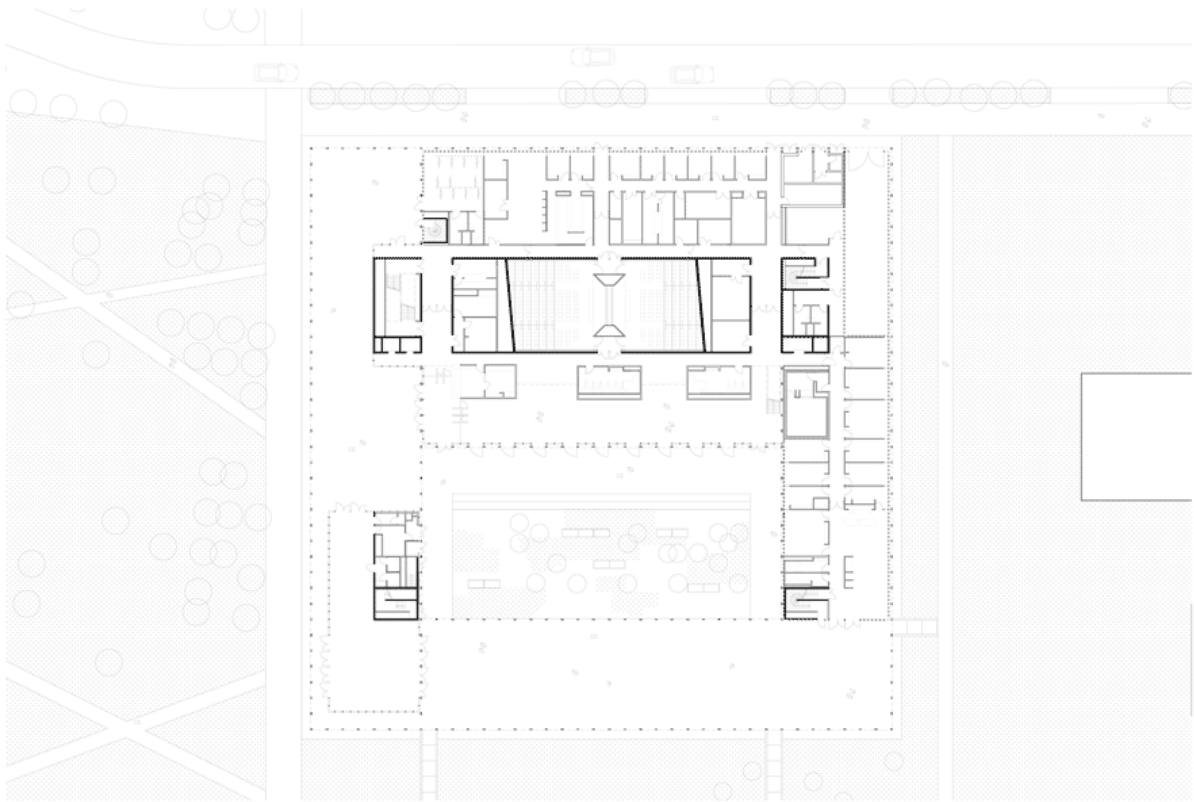
Inside, the structure remains present because it is always visible, recalling that the constructive expression lies at the root of both the order and the meaning: "I no longer separate the idea of the temple from that of its edification," (*Eupalinos*, Paul Valéry).

ISSN : 2575-5374



# urbanNext Lexicon

ENSAE Paristech: Capturing the Landscape  
<https://urbannext.net/ensae-paristech/>

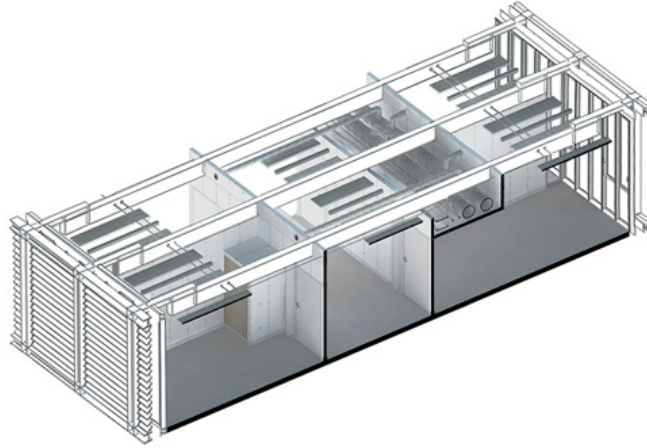


ISSN : 2575-5374



# urbanNext Lexicon

ENSAE Paristech: Capturing the Landscape  
<https://urbannext.net/ensae-paristech/>



ISSN : 2575-5374

# urbanNext Lexicon

ENSAE Paristech: Capturing the Landscape  
<https://urbannext.net/ensae-paristech/>

ISSN : 2575-5374