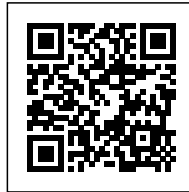




ECO-SITE: TO SUSTAINABLY MANAGE AND EXPLOIT LOCAL RESOURCES AND WASTE

Posted on December 2, 2020 by martabuges



Categories: [Atelier PNG](#), [Designing Matter](#), [Energy and sustainability](#), [Middle Density](#), [Project](#)

Tags: [France](#), [Local resources](#), [Power of materiality](#), [Project](#), [Renewable sources](#), [Sustainability](#), [Sustainable construction](#), [Texture](#), [Timber Structure](#), [Waste management](#), [Wood](#), [Wood construction](#), [Working Space](#)

urbanNext Lexicon

Eco-site: To Sustainably Manage and Exploit Local Resources and

Waste

<https://urbannext.net/eco-site/>

On the Vercors plateau, an eco-site was created to sustainably manage and exploit local resources and waste.



ISSN : 2575-5374

urbanNext Lexicon

Eco-site: To Sustainably Manage and Exploit Local Resources and

Waste

<https://urbannext.net/eco-site/>



The main activity in this remote valley is related to silviculture. The new equipment is an additional tool, a facility expected to improve working conditions and the difficulty of daily tasks through an efficient, warm and spacious building. The project consists of a main technical volume (a transfer dock for waste treatment and garages) as well as domestic-scale volumes gathering the offices and workshops.

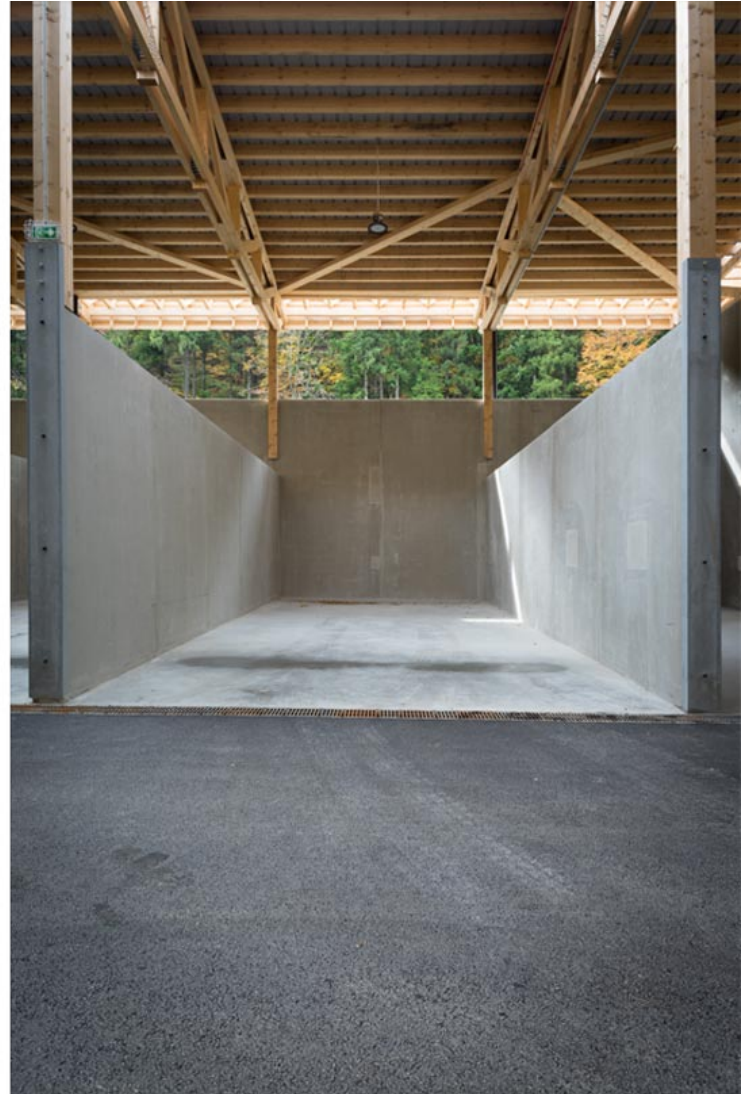
ISSN : 2575-5374

urbanNext Lexicon

Eco-site: To Sustainably Manage and Exploit Local Resources and

Waste

<https://urbannext.net/eco-site/>



ISSN : 2575-5374

urbanNext Lexicon

Eco-site: To Sustainably Manage and Exploit Local Resources and

Waste

<https://urbannext.net/eco-site/>



ISSN : 2575-5374

urbanNext Lexicon

Eco-site: To Sustainably Manage and Exploit Local Resources and

Waste

<https://urbannext.net/eco-site/>



The brief also centered on promoting a common resource: wood from local forests.

Located on the edge of the forest, as close as possible to the logging areas, the construction is designed and dimensioned based on the available timber species, tools and local savoir-faire. Logs cut during the year dry out in the shade of the trees that remain standing. They are transformed on site to be later used by all trades.

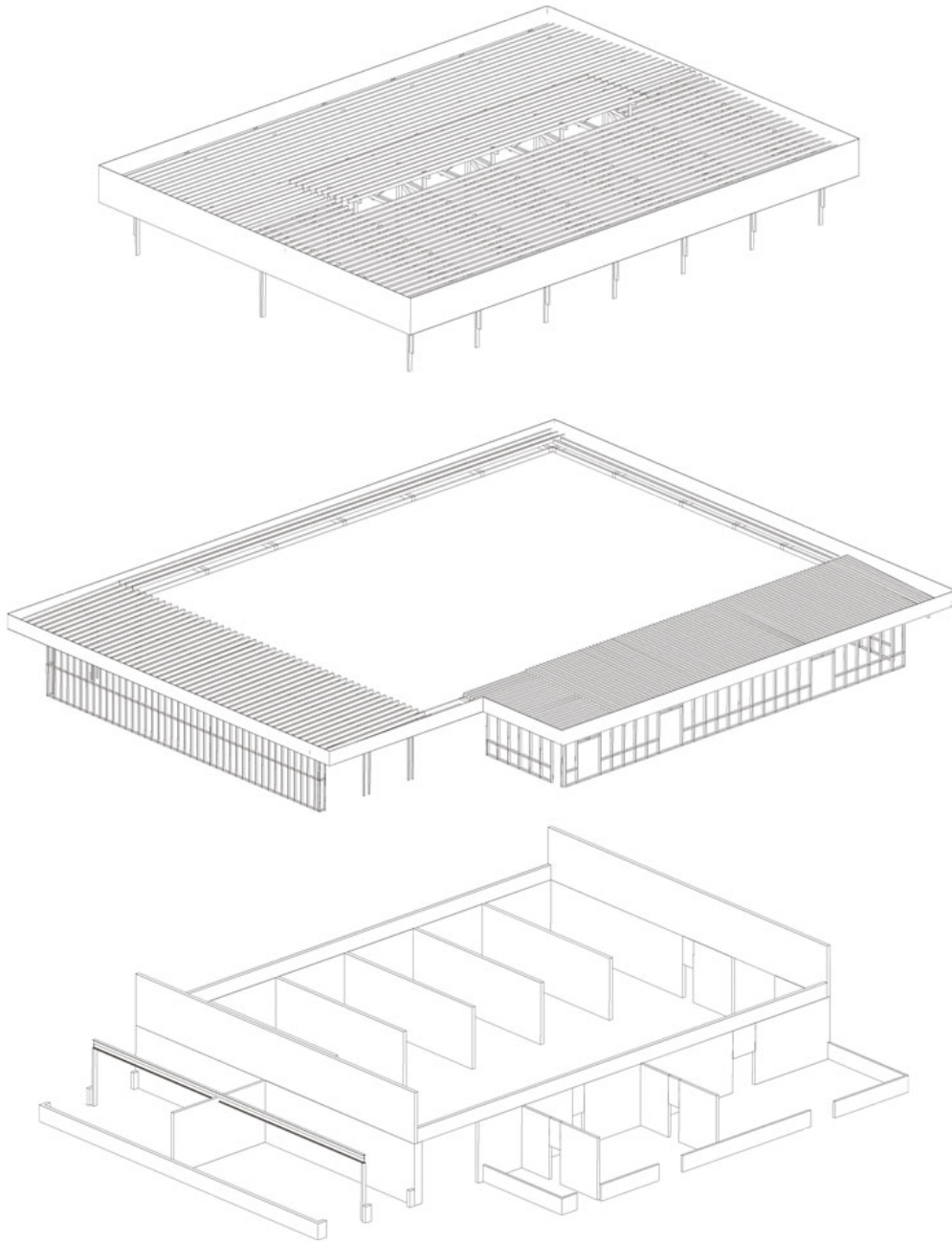
ISSN : 2575-5374

urbanNext Lexicon

Eco-site: To Sustainably Manage and Exploit Local Resources and

Waste

<https://urbannext.net/eco-site/>



ISSN : 2575-5374

urbanNext Lexicon

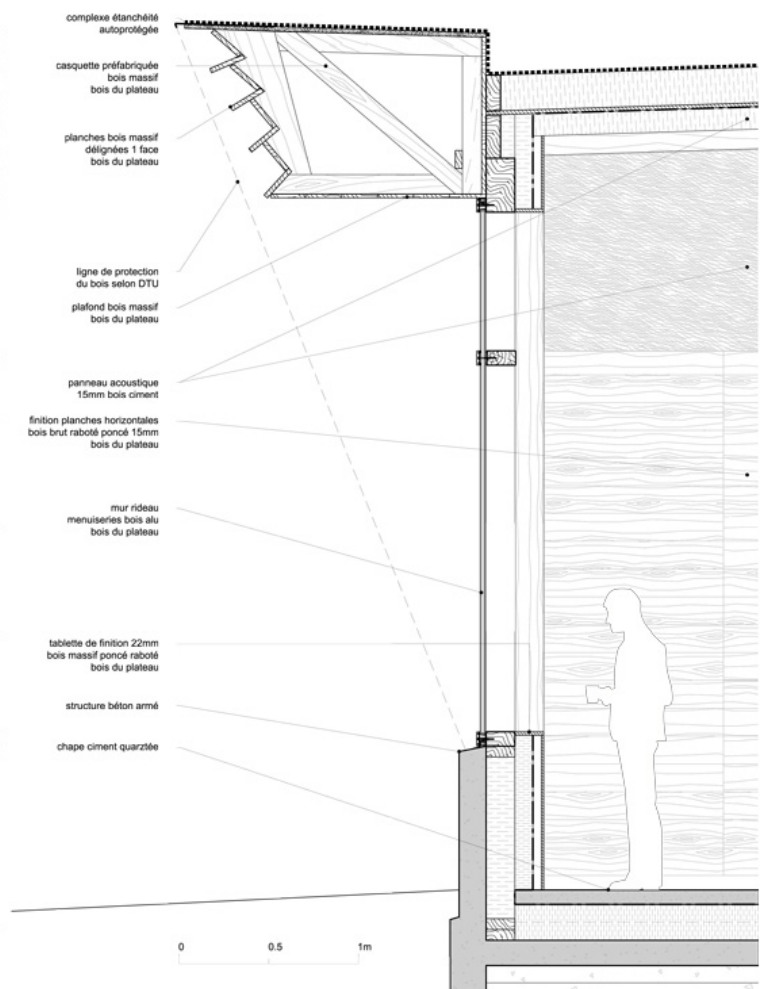
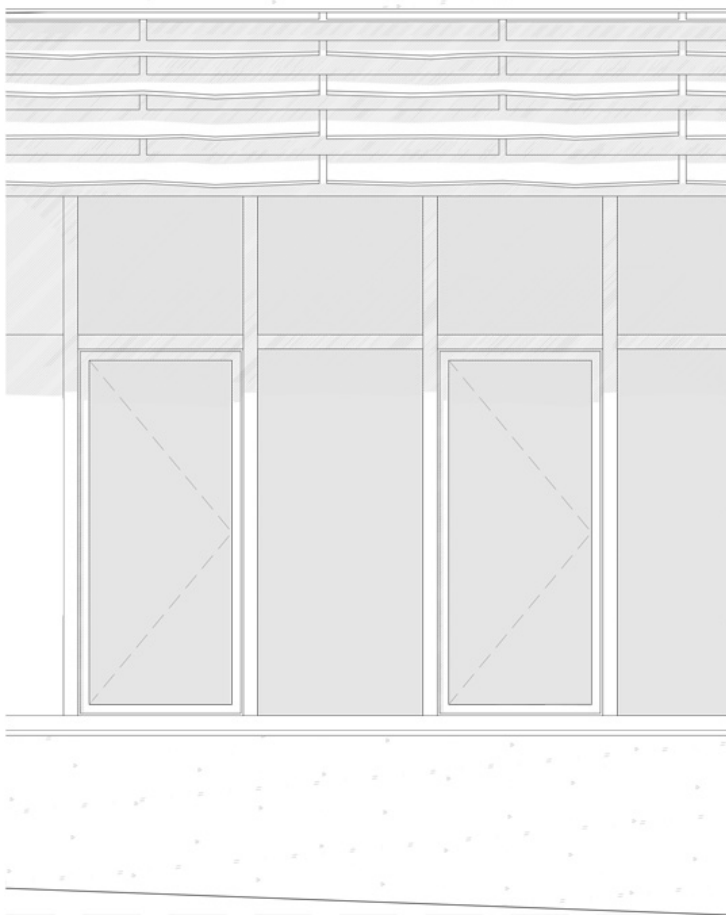
Eco-site: To Sustainably Manage and Exploit Local Resources and

Waste

<https://urbannext.net/eco-site/>

The project is a defense of timber construction and its virtues. For the structure, beams, cladding and ceilings, doors, windows, siding and partitions, wood is used everywhere and in various states of transformation: raw, not edged, planed, sanded, oiled. The construction is 100% Vercors wood: 186 m³ of solid wood chopped, sawn and processed on site.

Tone on tone, wood on wood.



ISSN : 2575-5374

urbanNext Lexicon

Eco-site: To Sustainably Manage and Exploit Local Resources and

Waste

<https://urbannext.net/eco-site/>

ISSN : 2575-5374