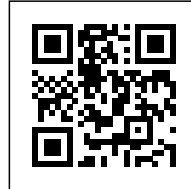




## DIM

*Posted on April 26, 2016 by Urban UrbanNext*



**Categories:** [Alles Wird Gut](#), [Middle Density](#), [Project](#), [Territory and mobility](#)

**Tags:** [Building](#), [City dialogue](#), [Compact building](#), [Housing](#), [Interactive building](#), [Luxembourg](#), [Multifunctional building](#), [Multiscalar](#), [Project](#), [Prototype building](#), [Public vs. Private](#), [Social city](#), [Territorial Approach](#), [Urban conditions](#), [Urban environment](#)

# urbanNext Lexicon

DIM

<https://urbannext.net/dim/>

A simple architectural trick is all that is needed to create high-quality apartment units within the existing Master Plan: south-facing breaches transform the linear blocks prescribed by the Master Plan into town house-like volumes.



This way, all apartments and breakfast kitchens are given two exterior façades with different orientations, one of which always is south.

ISSN : 2575-5374

At the same time, the building shape makes stairwell neighbors locatable: each apartment is thus assigned its unique specific place within the estate at large.



Individual apartment zones are situated concentrically around the central circulation stairwells in the interior of the buildings:

This provides maximum efficiency in the piping and wiring layout and, simultaneously, maximum flexibility in the arrangement of living rooms and bedrooms.

The service room zone thus turns into as noise-protection buffer between the stairwell and the bedrooms. The entire façade surface is assigned to residential spaces.

# urbanNext Lexicon

DIM

<https://urbannext.net/dim/>



ISSN : 2575-5374

The urban situation of the development is used to give the open-air community spaces their character, which in turn is what formally provides the bracket between the buildings:

All entrances are accessible from a north-facing urban plaza; on this side, the building façades show reticent urbanity.

All loggias on the other side look out on the south-facing community playground/park. The garden façades thus appear light and extroverted.

Available open-air spaces are complemented with rooftop sun terraces.



The compact building shape and state-of-the-art HVAC systems (residential air conditioning and ventilation, geothermal heat pumps, solar panels) ensure that the entire estate meets passive house standards.

# urbanNext Lexicon

DIM

<https://urbannext.net/dim/>



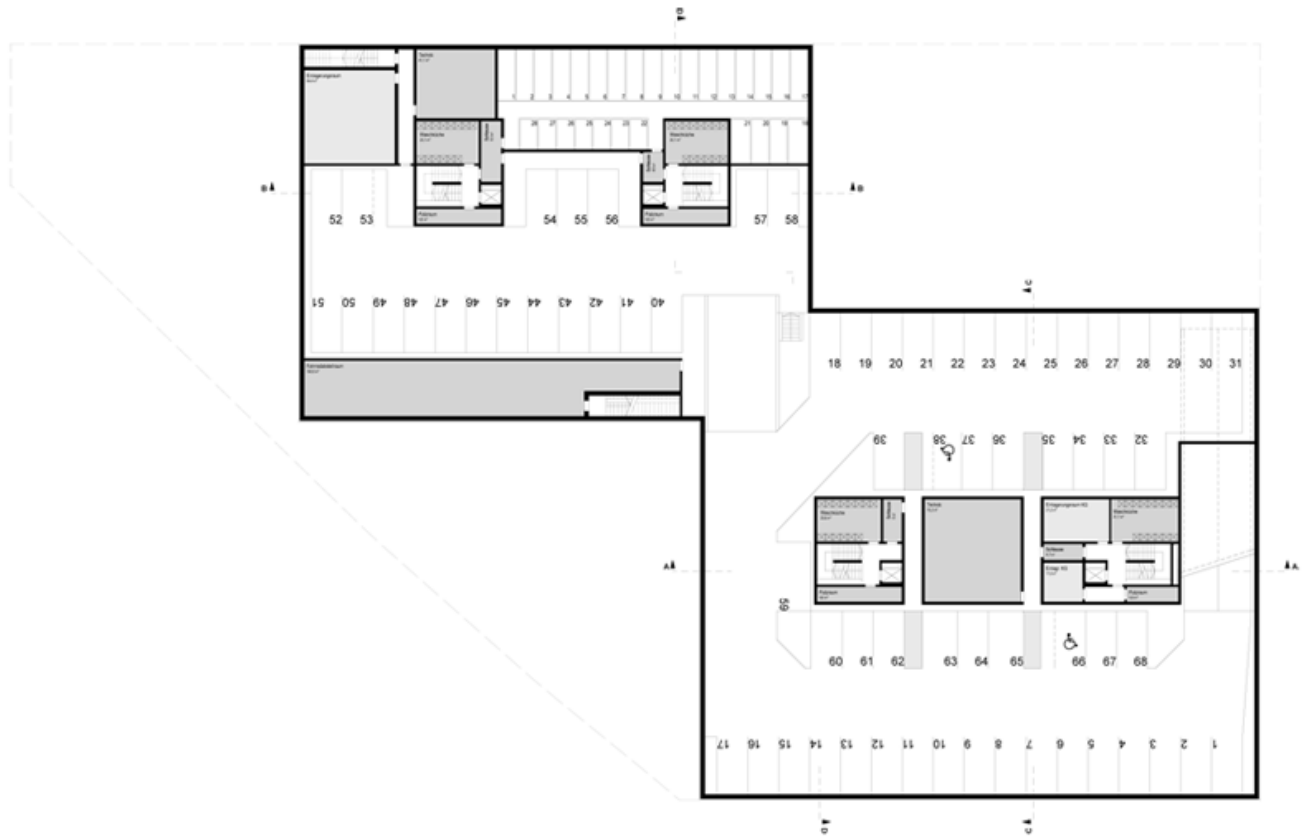
The ground floor is reserved for public functions: from the plaza, the kindergarten and several doctor's offices, all oriented south toward the playground/park, are accessed through separate entranceways.

ISSN : 2575-5374

# urbanNext Lexicon

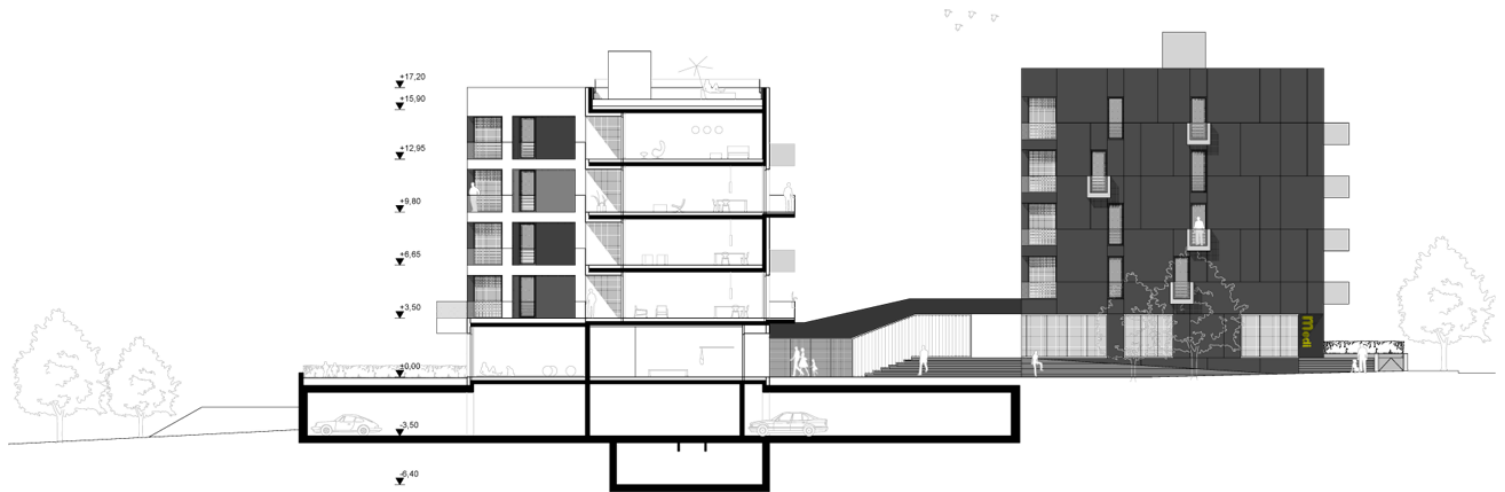
DIM

<https://urbannext.net/dim/>



ISSN : 2575-5374

## Plans



## Sections

