



## CUBE: SELF STUDY CENTER AT TILBURG UNIVERSITY

*Posted on November 23, 2021 by xavigonzalez*



---

**Categories:** [Contributors](#), [Densities](#), [Formats](#), [KAAN Architecten](#), [Middle Density](#), [Project](#), [Territory and mobility](#), [Topics](#), [Urban Paradigms](#)

**Tags:** [Architecture](#), [Auditorium](#), [Concrete](#), [Courtyard](#), [Educational Building](#), [Extension](#), [Façade](#), [Identity](#), [Landscape](#), [Project](#), [The Netherlands](#), [Tilburg](#), [User's experience](#), [Working Space](#)

# urbanNext Lexicon

CUBE: Self Study Center at Tilburg University

<https://urbannext.net/cube-self-study-center-at-tilburg-university/>

KAAN Architecten has designed "CUBE", the new Education and Self Study Center at Tilburg University (Netherlands). This compact and ostensibly low structure blends into its surrounding green landscape and into the larger architectural ensemble of the Dutch educational campus, which includes the quintessential Cobbenhagen building of the Catholic College of Economics, constructed back in the 1960s.



Located in the north-west corner of the campus, which is characterized by an orthogonal plan, the 11,000-square-meter building serves all faculties and is in constant use by some 2,200 students and lecturers who cross its spaces every day. CUBE is anchored to the landscape by paved pathways

ISSN : 2575-5374



# urbanNext Lexicon

CUBE: Self Study Center at Tilburg University

<https://urbannext.net/cube-self-study-center-at-tilburg-university/>

that guide users to its entrances on the south-side corners. It is a secluded space for study that feels like an opening in the woods.



ISSN : 2575-5374

# urbanNext Lexicon

CUBE: Self Study Center at Tilburg University  
<https://urbannext.net/cube-self-study-center-at-tilburg-university/>



More than any other building on the campus, the new Education and Self Study Center is a building for students: open and spacious, elegant and robust. KAAAN Architecten's design choices take into account not only current users but also future generations and the ongoing development of the university.

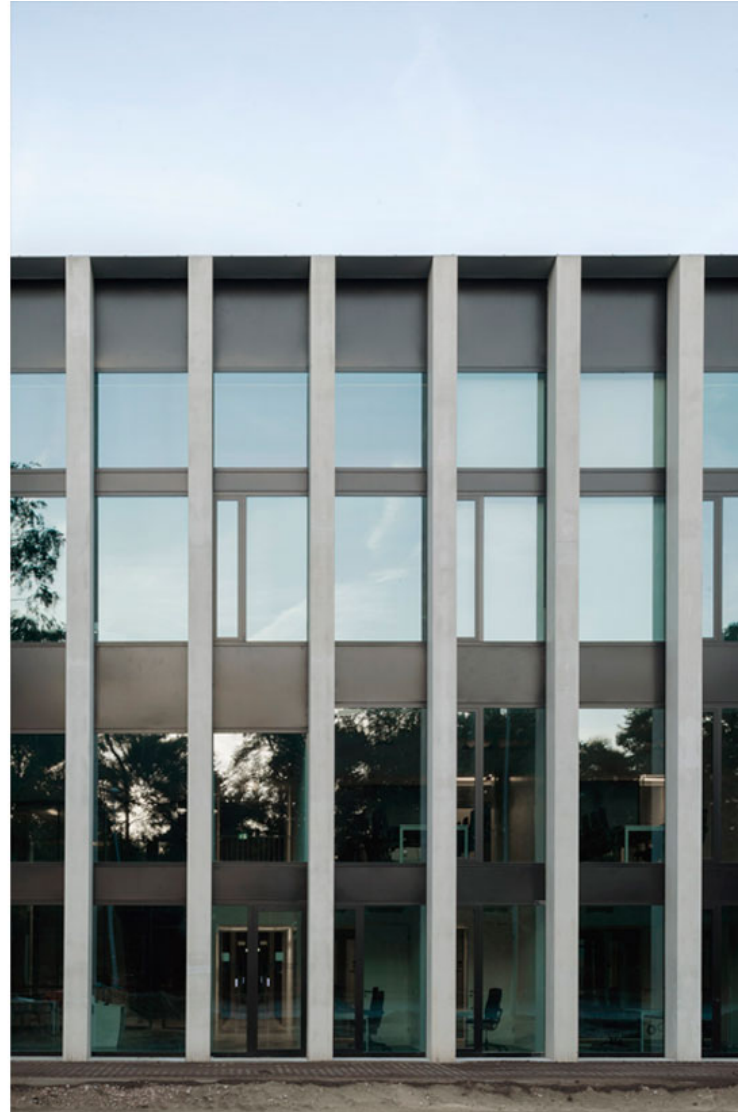
ISSN : 2575-5374



# urbanNext Lexicon

CUBE: Self Study Center at Tilburg University

<https://urbannext.net/cube-self-study-center-at-tilburg-university/>



In order to secure a free-flowing, open building and to avoid any sense of crowding, the heart of CUBE is a spacious indoor study plaza flanked by a transparent auditorium and two patios. On all sides, the building features a homogenous layout that leaves no closed-off façades but exudes complete equality on all sides. The transition from façade to green enclosure is practically seamless.

ISSN : 2575-5374

# urbanNext Lexicon

CUBE: Self Study Center at Tilburg University

<https://urbannext.net/cube-self-study-center-at-tilburg-university/>



The ground floor is welcoming and feels like an inviting public space thanks to the high ceilings and abundant daylight flowing deep into CUBE. It constitutes one continuous realm dotted with open study and circulation spaces, lounges and a catering area. Here, a white rounded graceful spiral staircase gives the building a sense of serenity.

ISSN : 2575-5374



# urbanNext Lexicon

CUBE: Self Study Center at Tilburg University

<https://urbannext.net/cube-self-study-center-at-tilburg-university/>



The auditorium, surrounded by glass walls, is part of this dynamic ensemble. Moreover, alongside the green patios, independent study spaces with lower ceilings are recessed, dedicated to concentrated work. On both floors, fully equipped lecture rooms run alongside the west, north and east façades, highlighting the strong orthogonal orientation of CUBE.

ISSN : 2575-5374

# urbanNext Lexicon

CUBE: Self Study Center at Tilburg University  
<https://urbannext.net/cube-self-study-center-at-tilburg-university/>



ISSN : 2575-5374



# urbanNext Lexicon

CUBE: Self Study Center at Tilburg University  
<https://urbannext.net/cube-self-study-center-at-tilburg-university/>



Spread symmetrically over the plan, four open staircases, including the main one, connect the indoor plaza to the first floor. With the exception of the main spiral staircase, all stairs and canopies are dark in colour, forming a common thread throughout the building, while all the public areas have power-floated concrete floors and light grey expanded metal ceilings.

ISSN : 2575-5374

# urbanNext Lexicon

CUBE: Self Study Center at Tilburg University  
<https://urbannext.net/cube-self-study-center-at-tilburg-university/>



Long wooden study tables, comfortable benches and armchairs complete the furnishings.

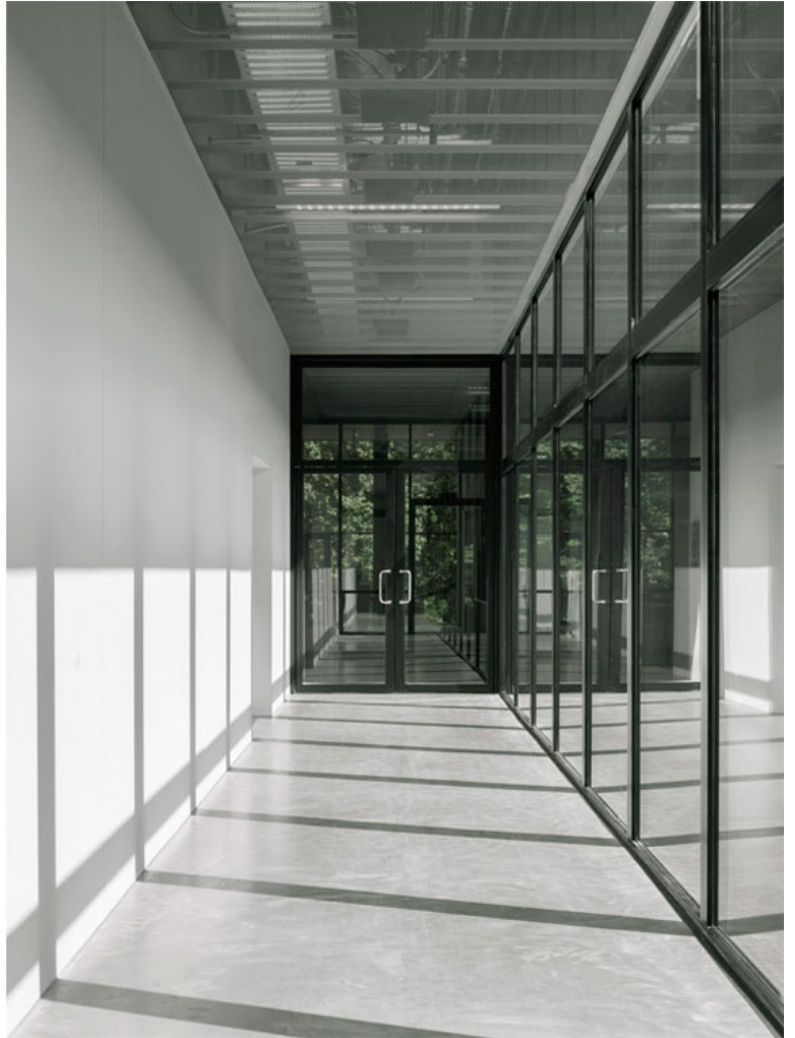
The auditorium has a warm, neutral interior. Floors, walls and ceiling are all *ton sur ton* – in welcoming shades of grey, which creates a unified spatial experience, suitable for the diverse typology of the events it houses.

ISSN : 2575-5374



# urbanNext Lexicon

CUBE: Self Study Center at Tilburg University  
<https://urbannext.net/cube-self-study-center-at-tilburg-university/>



Now open to the students, the vital and frenetic everyday life of CUBE enhances KAAN Architecten's discreet expression of an architectural concord, achieved with a clear and open design process that authentically reflects the building's identity.

ISSN : 2575-5374

# urbanNext Lexicon

CUBE: Self Study Center at Tilburg University

<https://urbannext.net/cube-self-study-center-at-tilburg-university/>



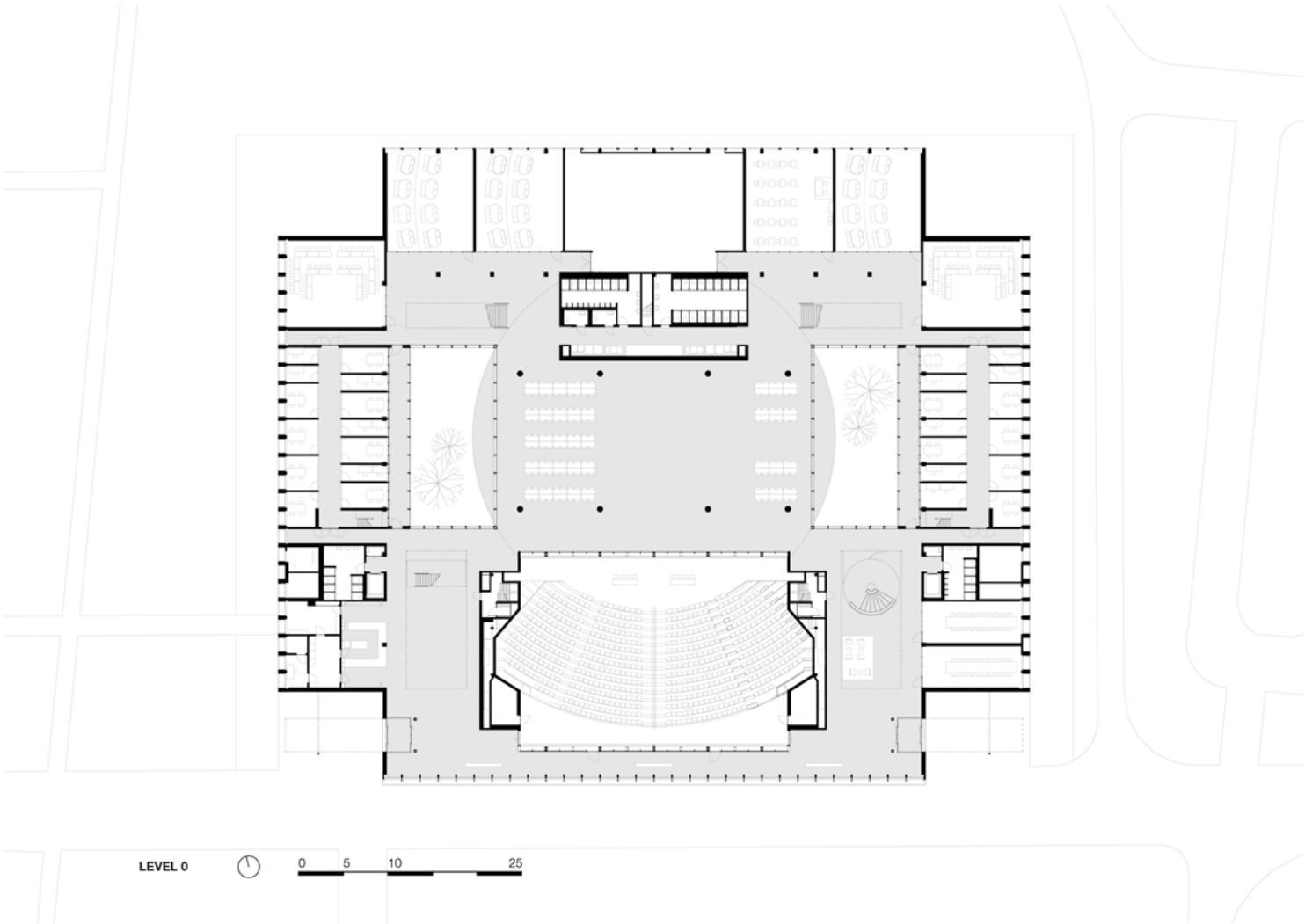
The Education and Self Study Center in Tilburg is the latest project dedicated to higher education and research to be completed this year by the Dutch firm. This state-of-the-art approach to public buildings, with a pronounced attitude towards spaces for concentration and lively sharing of ideas, is also intrinsic to the firm's recent UAM Campuses in Piracicaba and Sao José dos Campos in Brazil, as well as the Institut des Sciences Moléculaires d'Orsay in France, and the award-winning Education Center Erasmus MC in Rotterdam.

ISSN : 2575-5374



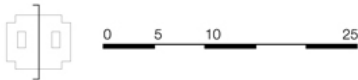
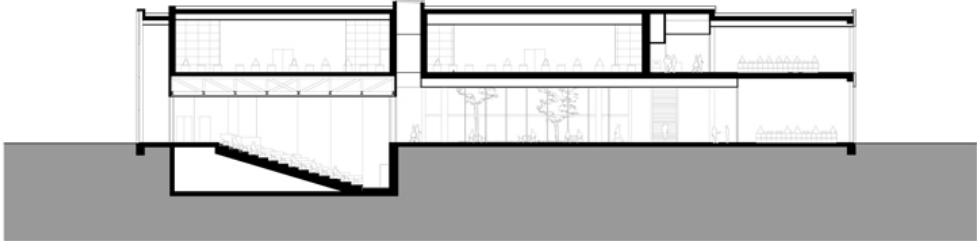
# urbanNext Lexicon

CUBE: Self Study Center at Tilburg University  
<https://urbannext.net/cube-self-study-center-at-tilburg-university/>



# urbanNext Lexicon

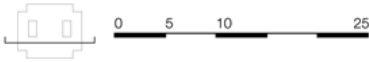
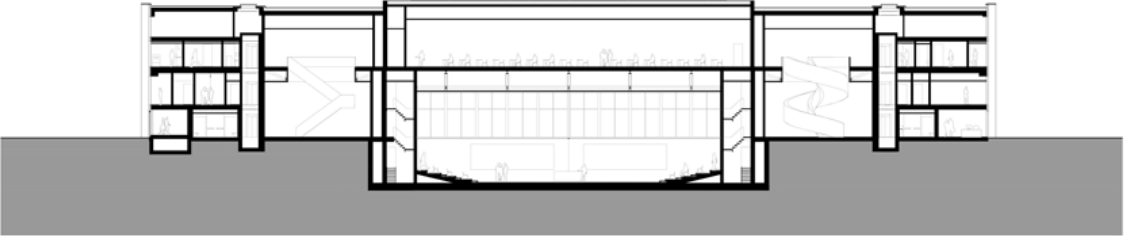
CUBE: Self Study Center at Tilburg University  
<https://urbannext.net/cube-self-study-center-at-tilburg-university/>





# urbanNext Lexicon

CUBE: Self Study Center at Tilburg University  
<https://urbannext.net/cube-self-study-center-at-tilburg-university/>



# urbanNext Lexicon

CUBE: Self Study Center at Tilburg University  
<https://urbannext.net/cube-self-study-center-at-tilburg-university/>

ISSN : 2575-5374