

CONCRETE WAVES: EXPLORING THE "YARD TYPOLOGY"

Posted on December 8, 2021 by xavigonzalez



Category: [Uncategorized](#)

urbanNext Lexicon

Concrete Waves: Exploring the "Yard Typology"
<https://urbannext.net/concrete-waves-exploring-the-yard-typology/>

Set within a tropical climate, the pre-cast façade manipulates the orientation of sun shading to craft the beautiful illusion that is Concrete Waves. Part of new industrial zone it is the latest project for FPT in Ho Chi Minh City that will be completed in three phases. Developed from the learnings of earlier projects such as High Tech Landscape and Concrete Lace, this progressive edition explores the "yard typology" from a new perspective.



ISSN : 2575-5374

urbanNext Lexicon

Concrete Waves: Exploring the "Yard Typology"
<https://urbannext.net/concrete-waves-exploring-the-yard-typology/>



ISSN : 2575-5374

urbanNext Lexicon

Concrete Waves: Exploring the "Yard Typology"
<https://urbannext.net/concrete-waves-exploring-the-yard-typology/>



The building benefits from a rational floor plan and an exterior load bearing structure. This smartly maximises the floor layout and provides flexible interior space solutions.

ISSN : 2575-5374

urbanNext Lexicon

Concrete Waves: Exploring the "Yard Typology"
<https://urbannext.net/concrete-waves-exploring-the-yard-typology/>



ISSN : 2575-5374

urbanNext Lexicon

Concrete Waves: Exploring the "Yard Typology"
<https://urbannext.net/concrete-waves-exploring-the-yard-typology/>



ISSN : 2575-5374

urbanNext Lexicon

Concrete Waves: Exploring the "Yard Typology"
<https://urbannext.net/concrete-waves-exploring-the-yard-typology/>

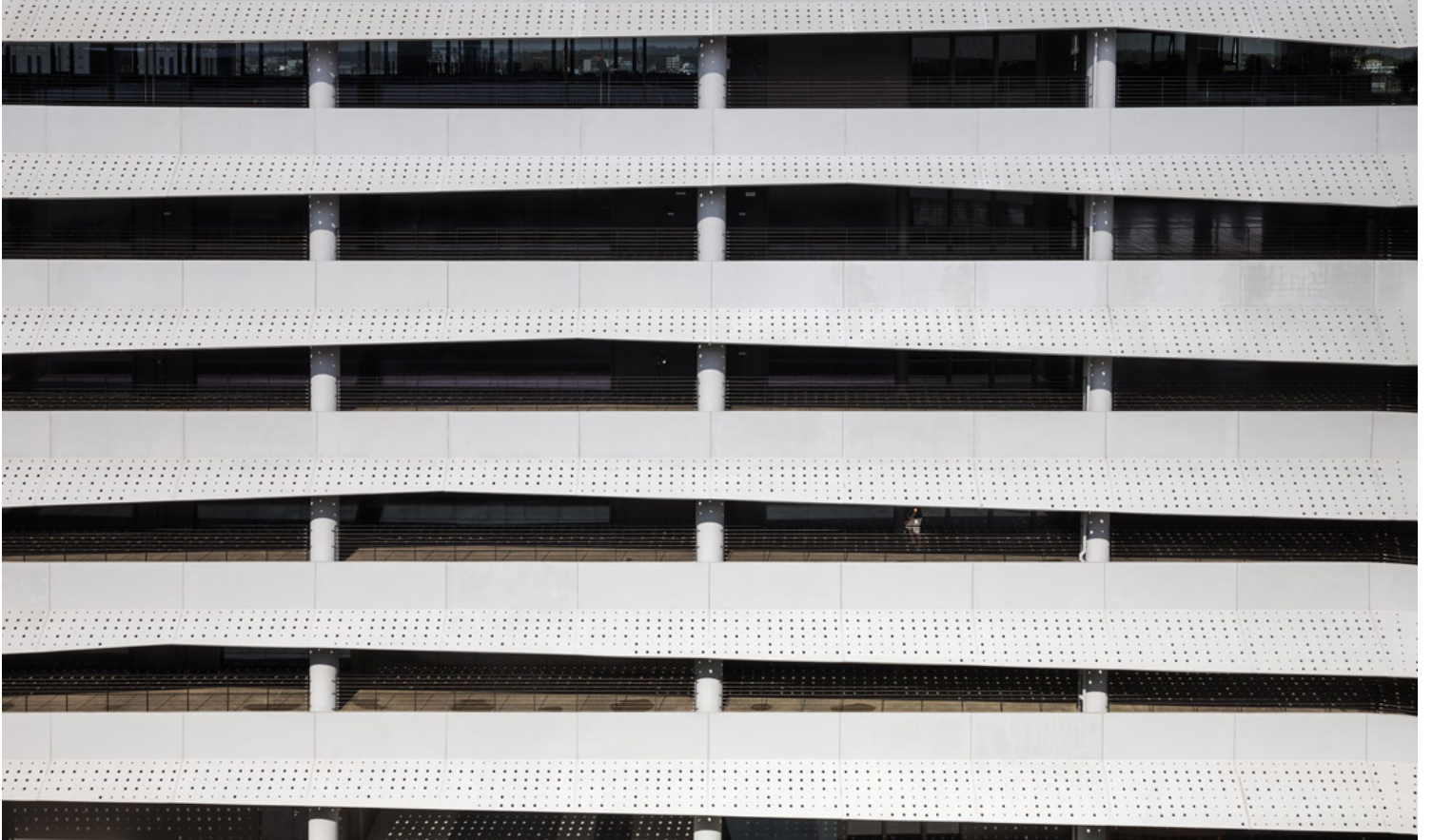


Circulation paths exist on the margins of the floor plans and relaxation areas can be found well shaded with double height sky gardens at each level, giving breathing space for a building that is highly compact. At base level natural light and cross ventilation allow the parking area to be pleasant.

ISSN : 2575-5374

urbanNext Lexicon

Concrete Waves: Exploring the "Yard Typology"
<https://urbannext.net/concrete-waves-exploring-the-yard-typology/>



ISSN : 2575-5374

urbanNext Lexicon

Concrete Waves: Exploring the "Yard Typology"
<https://urbannext.net/concrete-waves-exploring-the-yard-typology/>



ISSN : 2575-5374

urbanNext Lexicon

Concrete Waves: Exploring the "Yard Typology"
<https://urbannext.net/concrete-waves-exploring-the-yard-typology/>

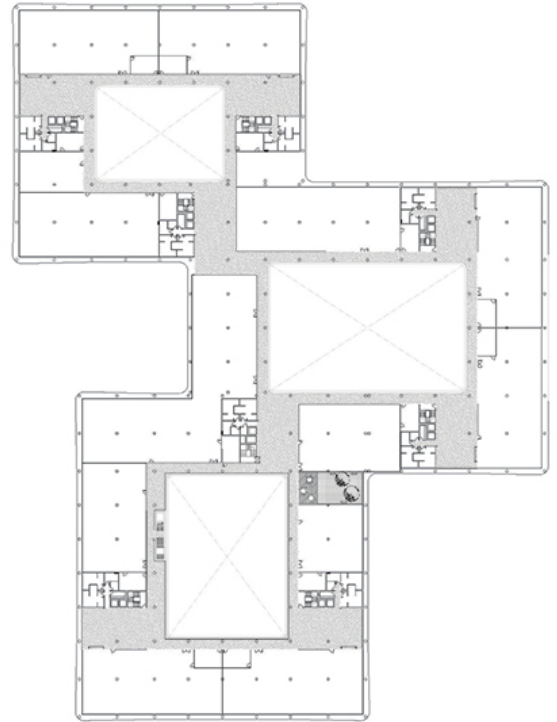
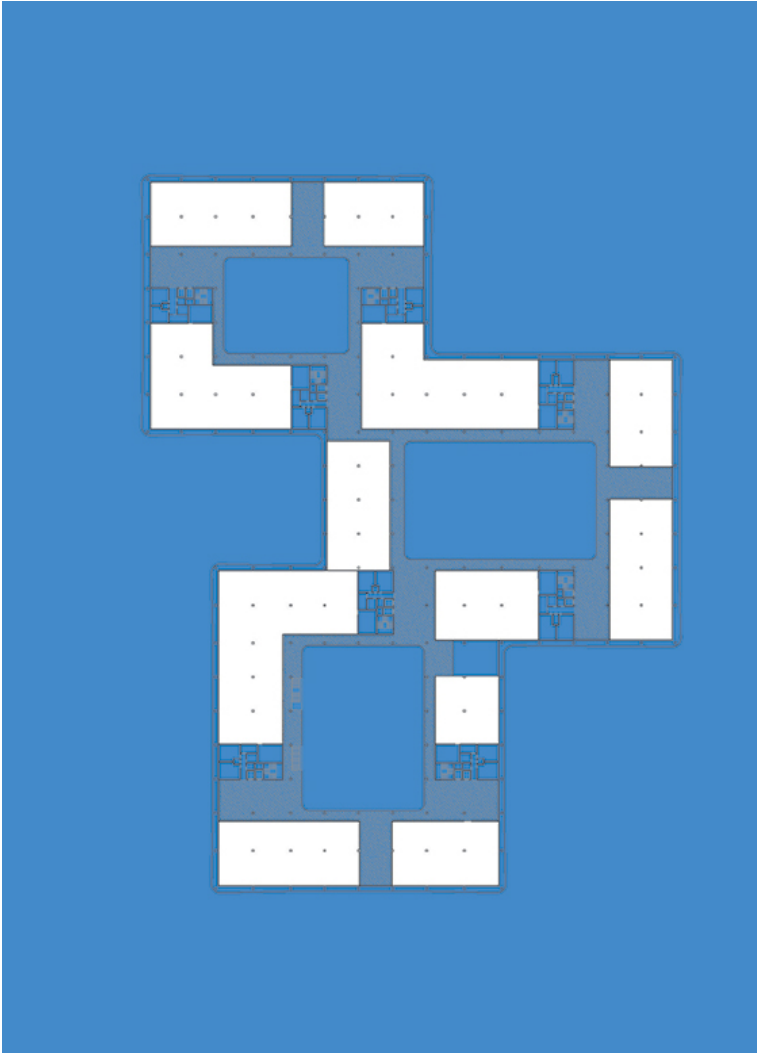


Landscape elements such as; fencing, signage, and parapet walls around the yard are made from red Corten Steel. The building's use of colour and material sets it apart from other developments within the vast masterplan. Marked by the high contrast between the mono chromatic skin of the building that is in light, medium and dark grey, and the stunning lush vegetation the building is iconic.

ISSN : 2575-5374

urbanNext Lexicon

Concrete Waves: Exploring the "Yard Typology"
<https://urbannext.net/concrete-waves-exploring-the-yard-typology/>



ISSN : 2575-5374

urbanNext Lexicon

Concrete Waves: Exploring the "Yard Typology"
<https://urbannext.net/concrete-waves-exploring-the-yard-typology/>

ISSN : 2575-5374