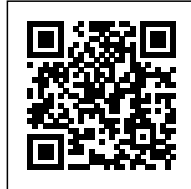




## COMPLEX SITULA

*Posted on March 1, 2016 by Urban UrbanNext*



**Categories:** [bevk perovic arhitekti d.o.o.](#), [Middle Density](#), [Project](#), [Technology and fabrication](#)

**Tags:** [Activation](#), [Active Building](#), [Aluminum skin](#), [Building](#), [City](#), [City dialogue](#), [Commercial infrastructure](#), [Copper](#), [Copper façade](#), [Façade](#), [Housing](#), [Ljubljana](#), [Multifunctional building](#), [Office building](#), [Project](#), [Slovenia](#), [Technological Approach](#), [Urban planning](#)

# urbanNext Lexicon

Complex Situla

<https://urbannext.net/complex-situla/>

New housing, shopping and office complex on Vilharjeva street is part of the redevelopment project of railway station area of Slovenian capital of Ljubljana, the largest urban renewal project in Slovenia.



The first building to be built within the new Masterplan of the area, Situla complex comprises a mix of different housing typologies, accompanied by diverse shopping and office programs on the lower floors, sitting on a large, 5-floor underground carpark, with a total of almost 80.000 s.q.m.of space.

ISSN : 2575-5374

# urbanNext Lexicon

Complex Situla

<https://urbannext.net/complex-situla/>



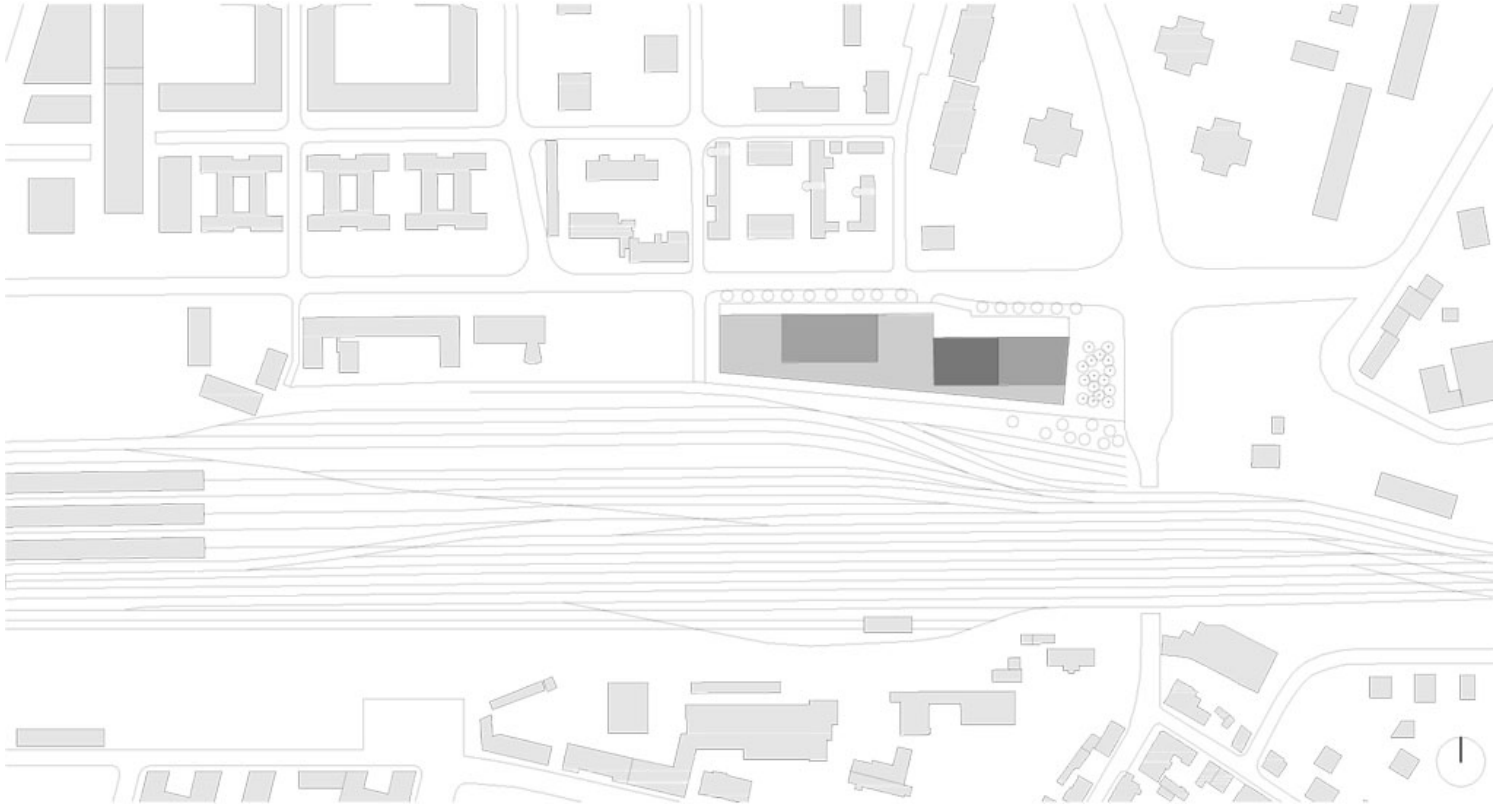
Conceived within strict limits of the Masterplan, which prescribed the exact outline of the entire complex - consisting of a two-story public 'plinth', 8-story apartment slab and a 20-story skyscraper - the idea of the project is to try to unify all different programmatic and volumetric demands within a common, single-material gesture – copper/bronze-colored perforated 'skin', appearing in different guises throughout the project.

ISSN : 2575-5374



# urbanNext Lexicon

Complex Situla  
<https://urbannext.net/complex-situla/>



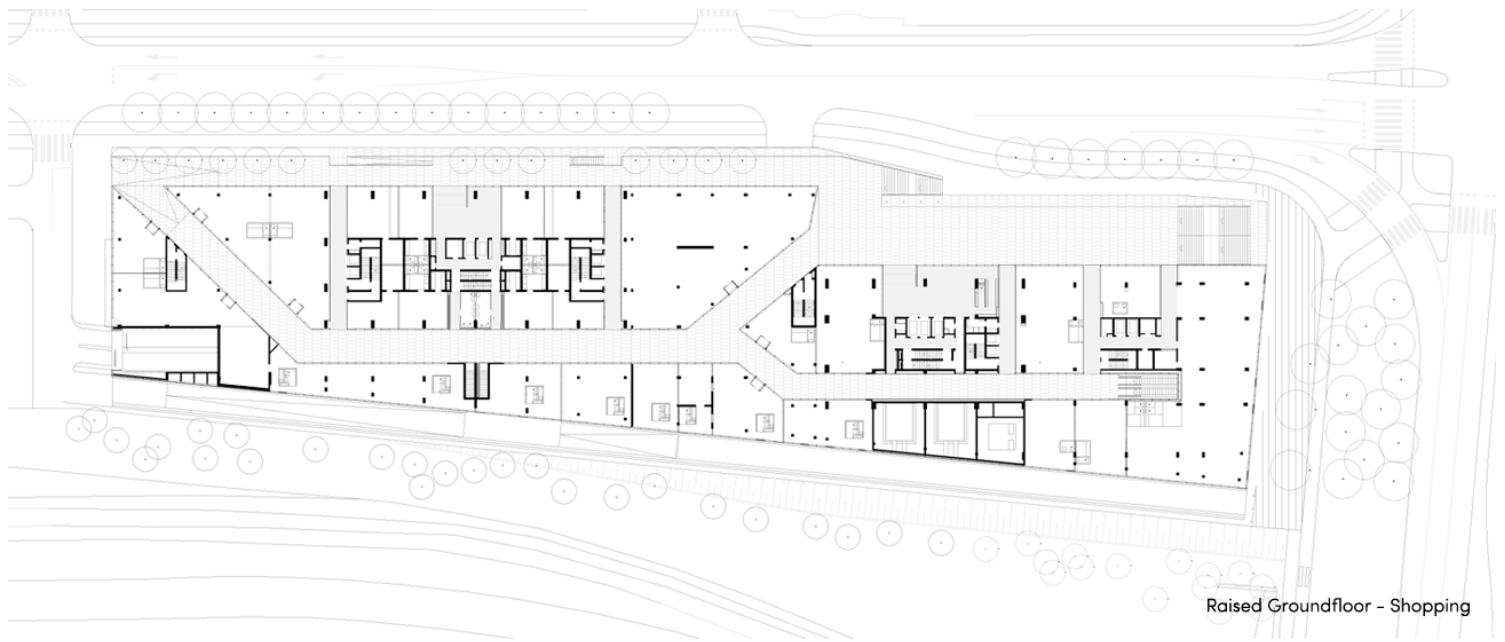
**Site Plan**

ISSN : 2575-5374

# urbanNext Lexicon

Complex Situla

<https://urbannext.net/complex-situla/>



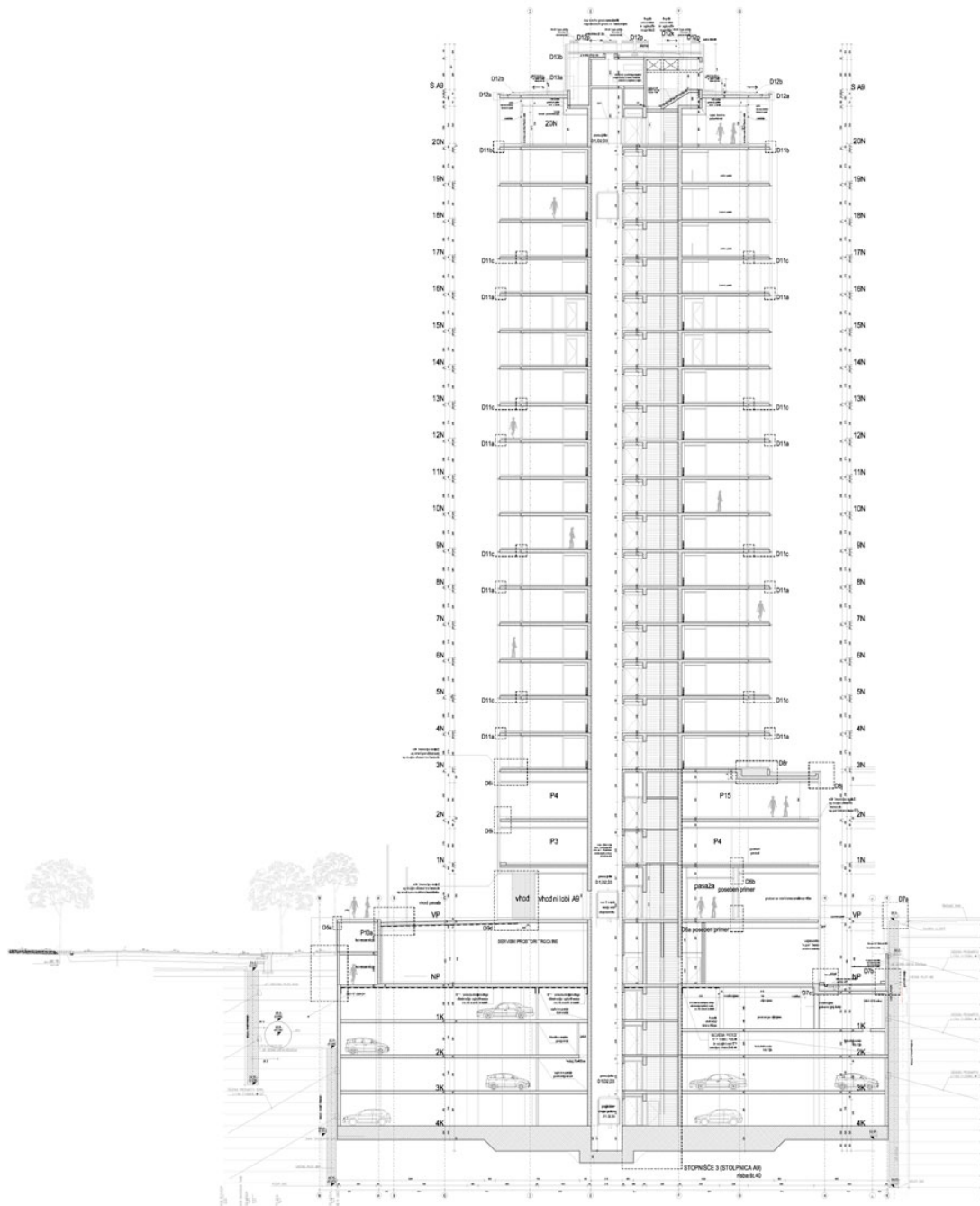
## Plans

ISSN : 2575-5374

# urbanNext Lexicon

Complex Situla

<https://urbannext.net/complex-situla/>



ISSN : 2575-5374

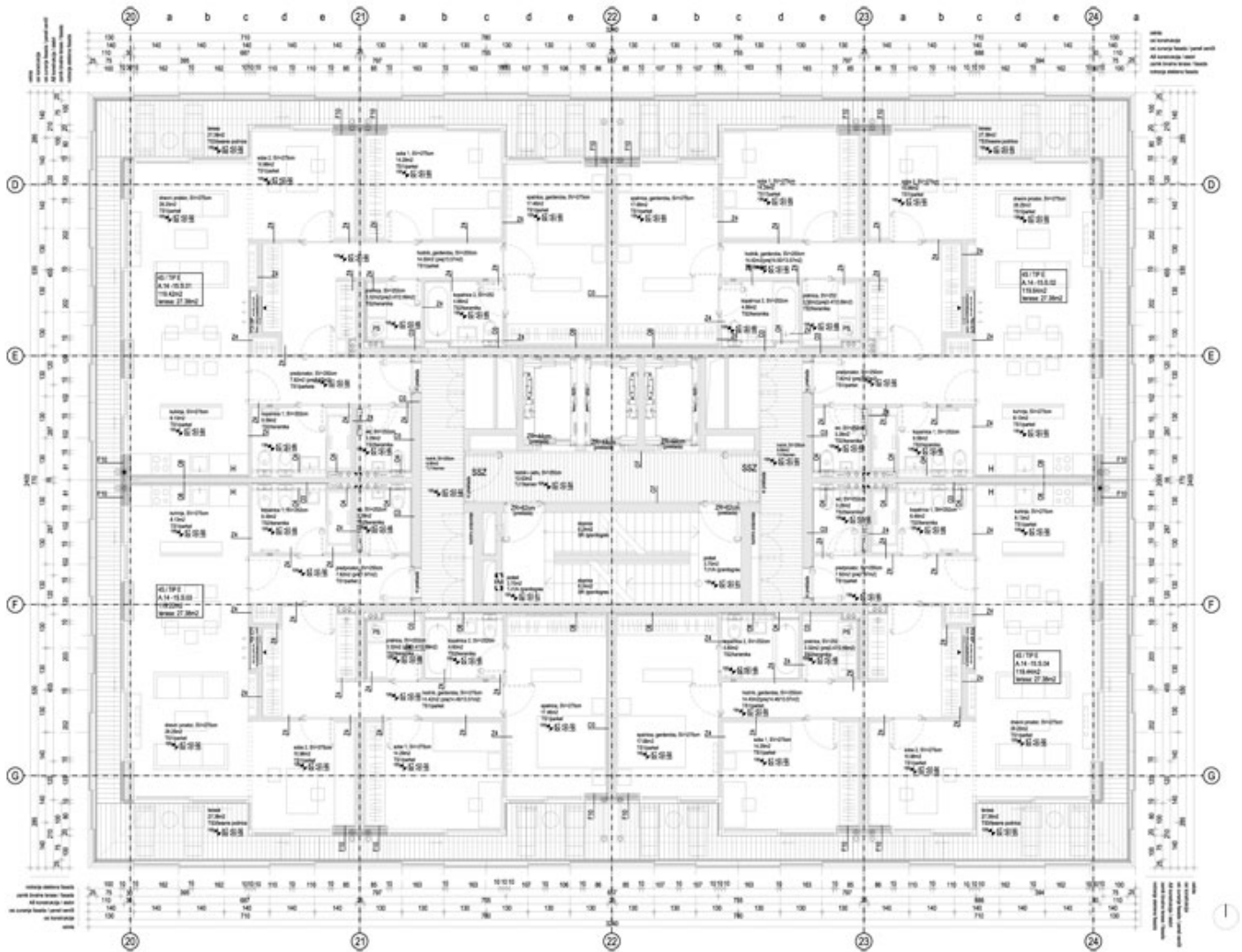
## Cross Section

The diversity of habitation possibilities, topping the office and shopping 'plinth', is a driving force of the project – ranging from patio houses and loft spaces on the roof of the base, to the standard apartment units within an 8-story slab and on the lower levels of the skyscraper, rising up in size and quality vertically up the tower, towards larger apartments and duplexes, culminating in two large penthouses on the top level of the skyscraper.

# urbanNext Lexicon

Complex Situla

<https://urbannext.net/complex-situla/>



All of the apartments are fully glazed, opening towards the views of the city centre and mountains surrounding Ljubljana, and wrapped with continuous ribbons of terraces, allowing for the units to open fully towards the outside.

ISSN : 2575-5374



# urbanNext Lexicon

Complex Situla

<https://urbannext.net/complex-situla/>



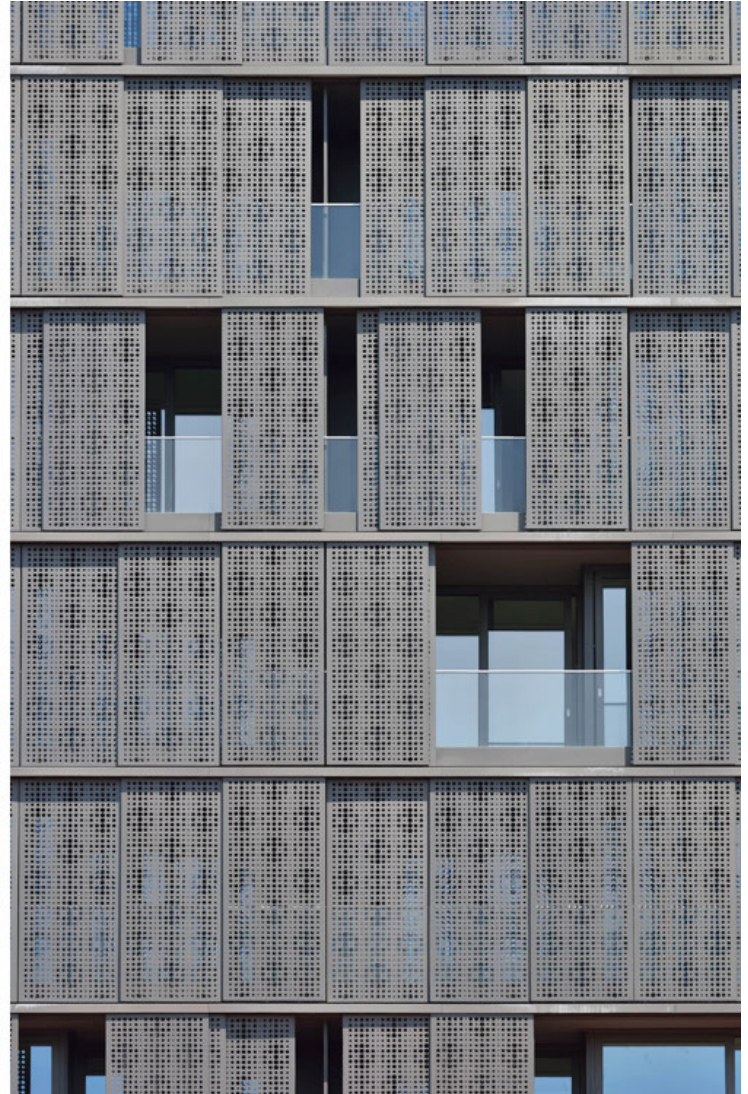
ISSN : 2575-5374



# urbanNext Lexicon

Complex Situla

<https://urbannext.net/complex-situla/>



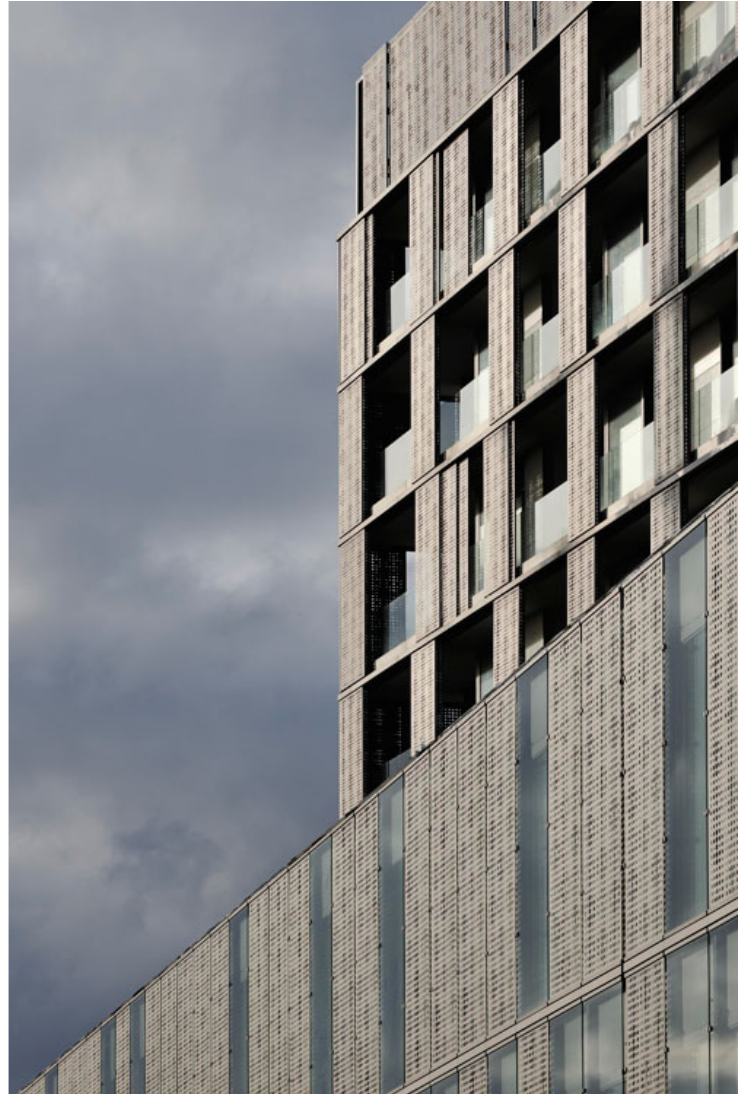
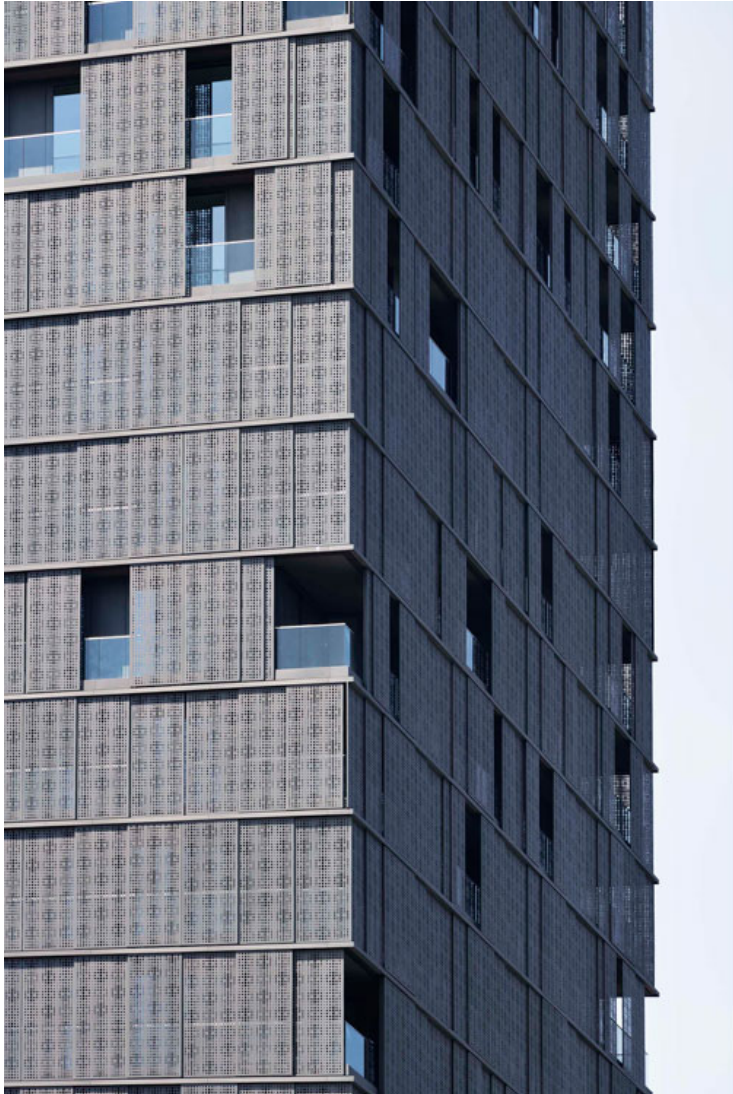
ISSN : 2575-5374



# urbanNext Lexicon

Complex Situla

<https://urbannext.net/complex-situla/>



A continuous enclosure in copper/bronze colored perforated sliding aluminum panels projects an ever-changing, but simultaneously uniform appearance of the multipurpose complex to the city.

ISSN : 2575-5374

# urbanNext Lexicon

Complex Situla

<https://urbannext.net/complex-situla/>



ISSN : 2575-5374



# urbanNext Lexicon

Complex Situla  
<https://urbannext.net/complex-situla/>

ISSN : 2575-5374