



CASA NO POMAR DO CAFEZAL

Posted on March 8, 2024 by Gabriel Sastre



Categories: [Brazil](#), [coletivo LEVANTE](#), [Energy and sustainability](#), [expanding design practices](#), [Middle Density](#), [Project](#), [Technology and fabrication](#), [Uncategorized](#)

Tags: [Architecture](#), [Brick](#), [Concrete](#), [Design strategies](#), [Energetic Approach](#), [Environment](#), [Housing](#), [Landscape](#), [Project](#), [Reuse](#)

urbanNext Lexicon

Casa no Pomar do Cafezal

<https://urbannext.net/casa-no-pomar-do-cafezal/>

The house was built on an angled plot of approximately 70 m², made up of two structural modules of 3×3 m on two levels, and bordered by a small extension running along the plot's edge. From afar, it blends in with the brick constructions of the “Aglomerado da Serra”, the slum where the house is located.



The classic 8-hole brick determines the material quality of the house, laid horizontally to reveal its textured side. This technique is unusual in the slums, since laying the brick vertically is faster and makes more efficient use of the material.

ISSN : 2575-5374

urbanNext Lexicon

Casa no Pomar do Cafezal

<https://urbannext.net/casa-no-pomar-do-cafezal/>



In this case, the idea was to provide better thermal inertia for the house, since, with the horizontal layout, the thickness of the wall corresponds to the longer edge of the brick. In addition, we explored different ways of using the brick as a modular element: in some cases, it forms a lattice, and in others it is combined with concrete blocks for structural purposes.

ISSN : 2575-5374

urbanNext Lexicon

Casa no Pomar do Cafezal

<https://urbannext.net/casa-no-pomar-do-cafezal/>



We maintained the constructive repertoire characteristic of the slums' vernacular architecture. Regarding the structure and the exposed brick enclosure, we were careful to account for the flow of rainwater and its absorption into the ground. We minimized earth movements and ensured natural ventilation and lots of daylight, in addition to controlling temperatures using lightweight elements such as eucalyptus blinds and vegetation. Finally, of course, we aimed to highlight the views, which are extraordinary and cannot be seen from anywhere else in the city.

ISSN : 2575-5374

urbanNext Lexicon

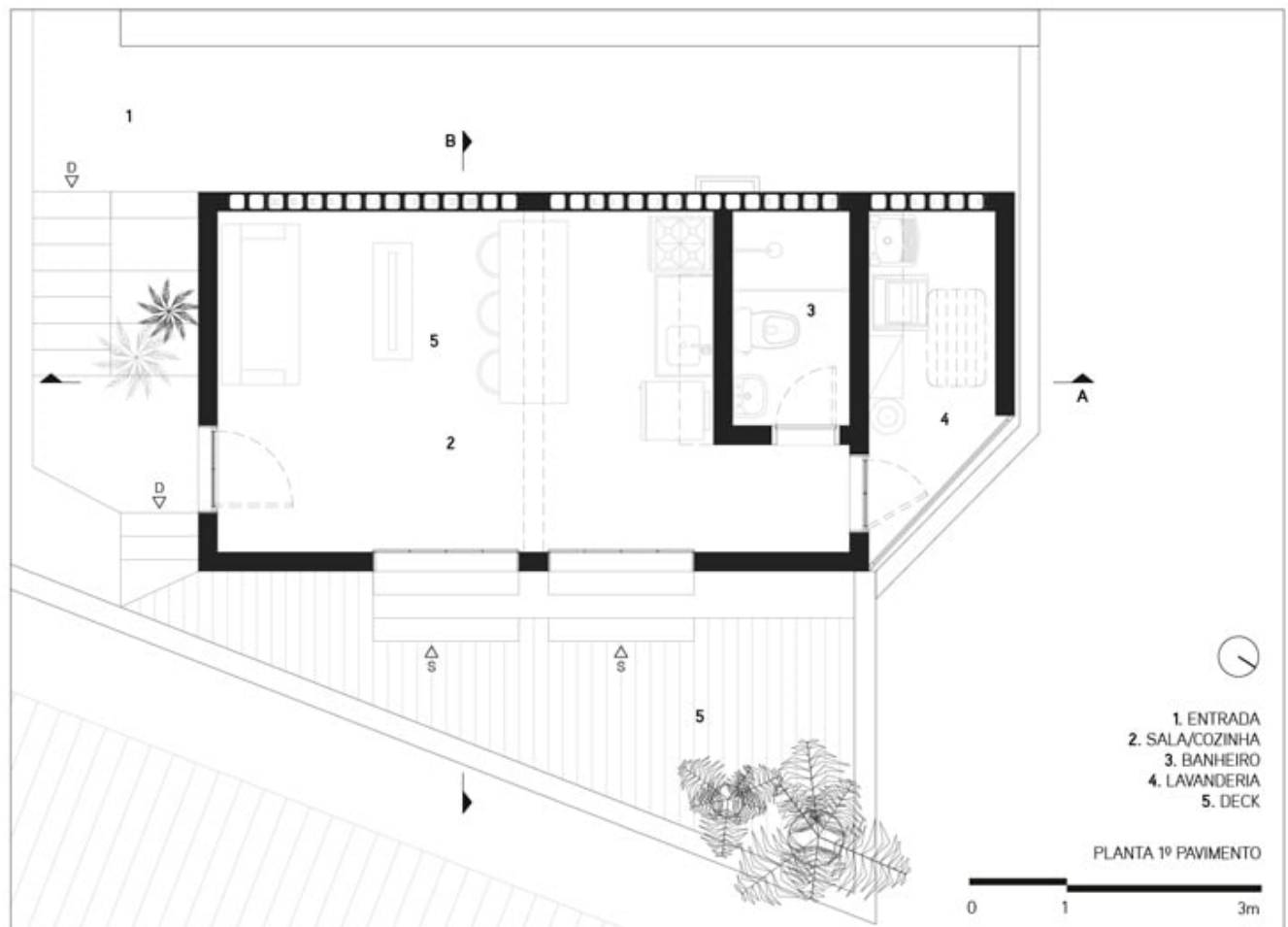
Casa no Pomar do Cafezal
<https://urbannext.net/casa-no-pomar-do-cafezal/>



"Casa no Pomar do Cafezal" was the second work carried out by the collective "LEVANTE", a group of architects, students and engineers led by Fernando Maculan and Joana Magalhães, whose goal is to design projects, involving suppliers and sponsors in slum architecture in Belo Horizonte. In 2021, the project won an Honorable Mention in the 21st IAB MG architectural competition. For us, the design of the house represents a constructive model that uses common materials in the slums with a careful implementation and attention to lighting and ventilation, resulting in great spatial quality.

urbanNext Lexicon

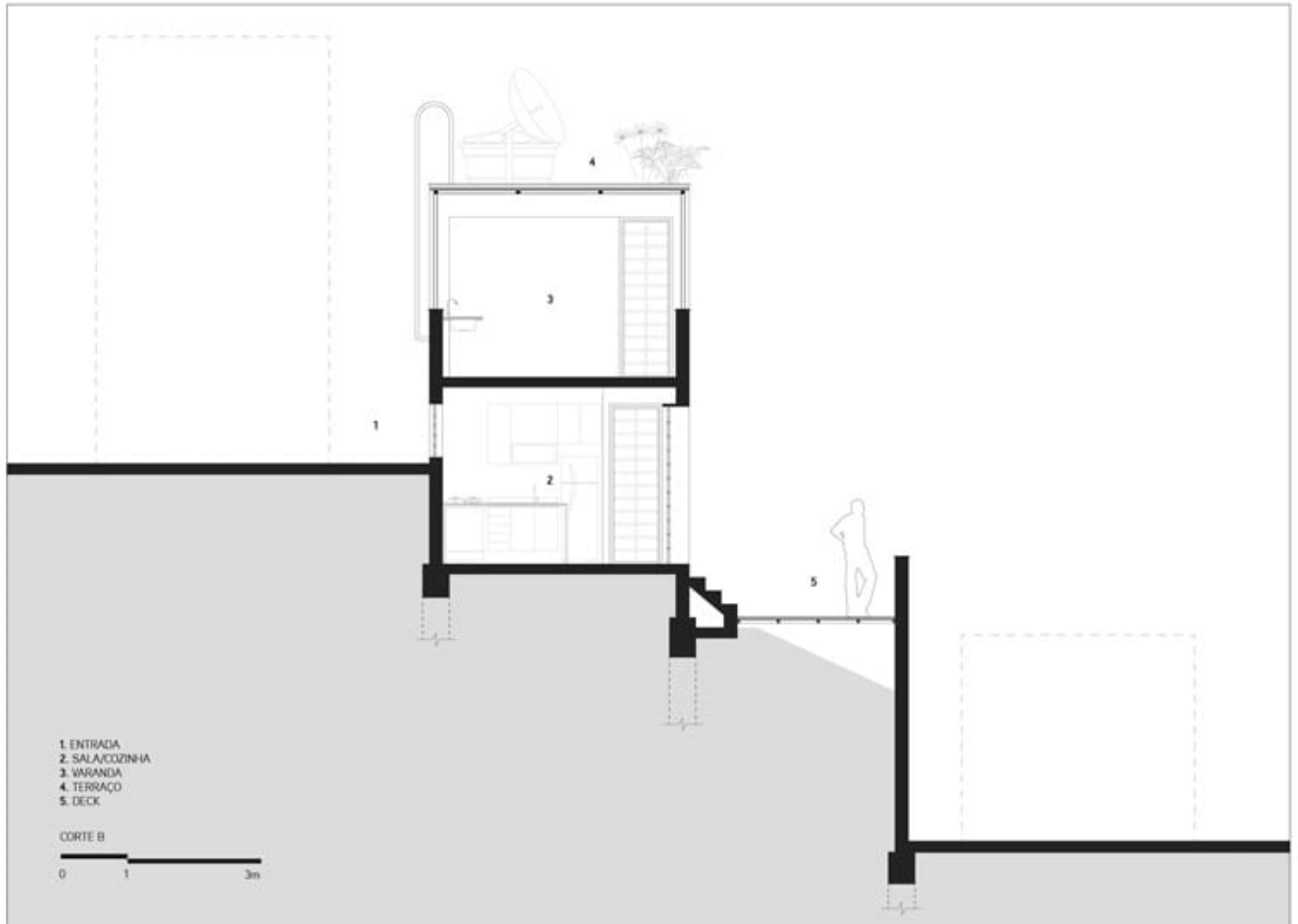
Casa no Pomar do Cafezal
<https://urbannext.net/casa-no-pomar-do-cafezal/>



ISSN : 2575-5374

urbanNext Lexicon

Casa no Pomar do Cafezal
<https://urbannext.net/casa-no-pomar-do-cafezal/>



ISSN : 2575-5374

