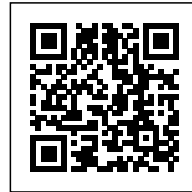




CASA EM MONSARAZ: A PROTECTED COURTYARD EMBRACING THE WATER

Posted on June 1, 2021 by martabuges



Categories: [Aires Mateus](#), [Designing Matter](#), [Low Density](#), [Project](#), [Territory and mobility](#)

Tags: [Alentejo](#), [Architecture&nature](#), [Courtyard](#), [Geometry](#), [House](#), [Inhabiting Landscape](#), [Landscape](#), [Natural Lighting](#), [Open Space](#), [Portugal](#), [Project](#), [Territorial Approach](#), [Territory](#), [Topography](#), [Waterfront](#), [Watery Territory](#)



Facing the boundless expanse of Alqueva Lake, the house requires a center: a protected courtyard embracing the water.





It uses the terrain to cast a dome that covers the social areas and is the center of life in the house.







An inverted dome intersects it and creates an opening that lights the space, shaping its precise geometry and limits.



The bedrooms open onto circular patios. Amid a wide natural landscape, the scale of the house is that of the patios and dome above.







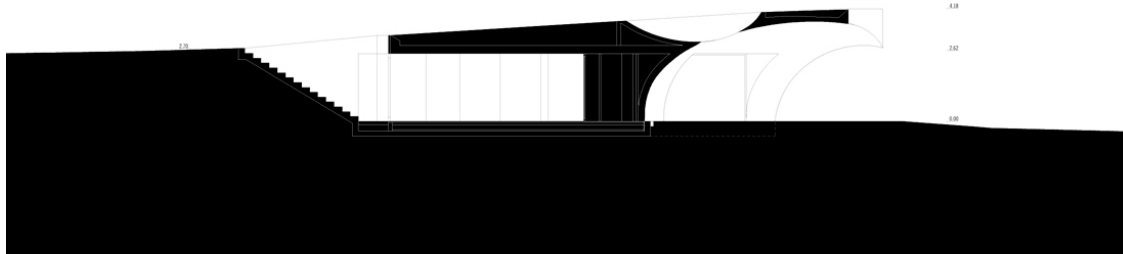
They are the sole visible elements, painted in radiant white.



east elevation



south elevation



cross section



0 5 10 20



