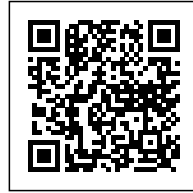




BRIGHTLANDS SMART SERVICE

Posted on December 27, 2016 by urbanNext



Categories: [Middle Density](#), [Project](#),
[Technology and fabrication](#), [Van Eijk & Van der
Lubbe](#)

Tags: [Citizen interaction](#), [Educational Building](#),
[Facilities](#), [Interaction](#), [Interactive building](#),
[Maastricht](#), [Multifunctional building](#),
[Multifunctional space](#), [Project](#), [Refurbishment](#),
[Technological Approach](#), [The Netherlands](#)

urbanNext Lexicon

Brightlands Smart Service
<https://urbannext.net/brightlands-smart-service/>

A former ABP office building dating from 1977 is now a breeding ground for education, research and entrepreneurship. *diederendirrix* architecture & urban development and Van Eijk & Van der Lubbe designed the Brightlands Smart Service Campus in Heerlen. The building got a new entrance and two floors were redesigned into a 'community floor'. It is the perfect place in the building to meet and work together.

ISSN : 2575-5374

urbanNext Lexicon

Brightlands Smart Service
<https://urbannext.net/brightlands-smart-service/>

ISSN : 2575-5374

urbanNext Lexicon

Brightlands Smart Service
<https://urbannext.net/brightlands-smart-service/>



ISSN : 2575-5374

urbanNext Lexicon

Brightlands Smart Service
<https://urbannext.net/brightlands-smart-service/>

ISSN : 2575-5374



Architecture encourages people to meet and work together

diederendirix renovated the former giant ABP office building measuring 21,000 square metres and made it into a campus for start-ups, companies and a scientific institute. The initiative was promoted by the pension provider APG, Maastricht University and the Province of Limburg.

urbanNext Lexicon

Brightlands Smart Service
<https://urbannext.net/brightlands-smart-service/>

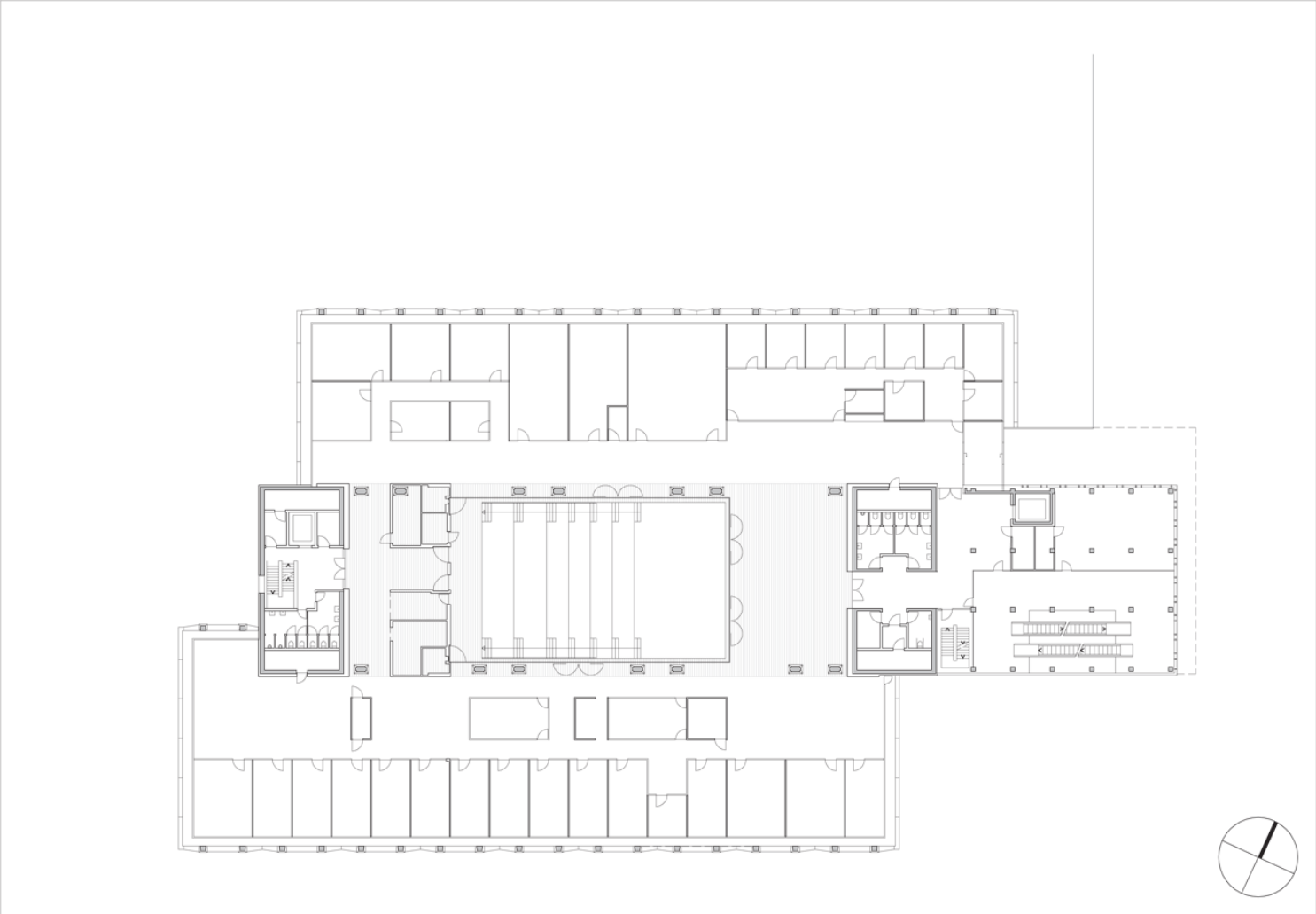
ISSN : 2575-5374

urbanNext Lexicon

Brightlands Smart Service
<https://urbannext.net/brightlands-smart-service/>

ISSN : 2575-5374

urbanNext Lexicon



Plans

urbanNext Lexicon

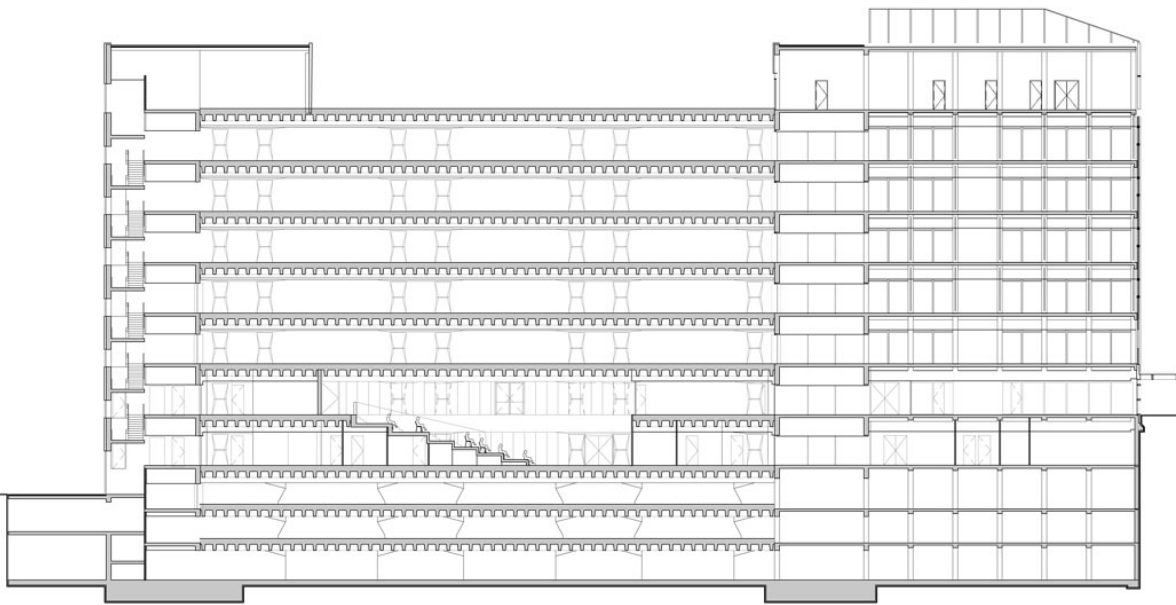
Brightlands Smart Service
<https://urbannext.net/brightlands-smart-service/>

ISSN : 2575-5374

urbanNext Lexicon

Brightlands Smart Service
<https://urbannext.net/brightlands-smart-service/>

ISSN : 2575-5374



Section

The characteristic concrete structure, with columns and façade elements in a beautiful hourglass shape, forms the basis of the design. diederendirix designed two zones within this structure. The middle zone is a warm wooden world for meeting and knowledge exchange, including among other things the Living Room, espresso bar and the Forum. In the zone around the Forum, diederendirix designed a light, glass world offering a view of the park-like surroundings. Office spaces, meeting rooms, education and research spaces – among other things – are housed in this glass world.

urbanNext Lexicon

Brightlands Smart Service
<https://urbannext.net/brightlands-smart-service/>

ISSN : 2575-5374

urbanNext Lexicon

Brightlands Smart Service
<https://urbannext.net/brightlands-smart-service/>



ISSN : 2575-5374

urbanNext Lexicon

Brightlands Smart Service
<https://urbannext.net/brightlands-smart-service/>

ISSN : 2575-5374

urbanNext Lexicon

Brightlands Smart Service

<https://urbannext.net/brightlands-smart-service/>



In the middle zone the flooring between the first and second floor was partly broken through, which creates a double-height space. This space, the Forum, contains a large wooden stand which also serves as a circulation area. Here, people can work together and debate, and lectures can be held. The glass walls provide a view of the surrounding spaces, such as the meeting places and the restaurant.

ISSN : 2575-5374

urbanNext Lexicon

Brightlands Smart Service
<https://urbannext.net/brightlands-smart-service/>

ISSN : 2575-5374

urbanNext Lexicon

Brightlands Smart Service
<https://urbannext.net/brightlands-smart-service/>



ISSN : 2575-5374

urbanNext Lexicon

Brightlands Smart Service
<https://urbannext.net/brightlands-smart-service/>

ISSN : 2575-5374



A new awning makes a welcoming entrance

On the east façade we made a new inviting entrance. This part of the façade and the awning for the new entrance are made with a special steel construction. The diamond shape and details fit in with the existing building. In collaboration with the garden and landscape designers at Donkergroen we designed the lay-out of the park at the entrance.

"Encouraging people to meet and work together more – our architectural interventions at the Brightlands campus are focused on this." Paul Diederer, architect/partner diederendirix.

urbanNext Lexicon

Brightlands Smart Service
<https://urbannext.net/brightlands-smart-service/>

ISSN : 2575-5374

urbanNext Lexicon

Brightlands Smart Service
<https://urbannext.net/brightlands-smart-service/>

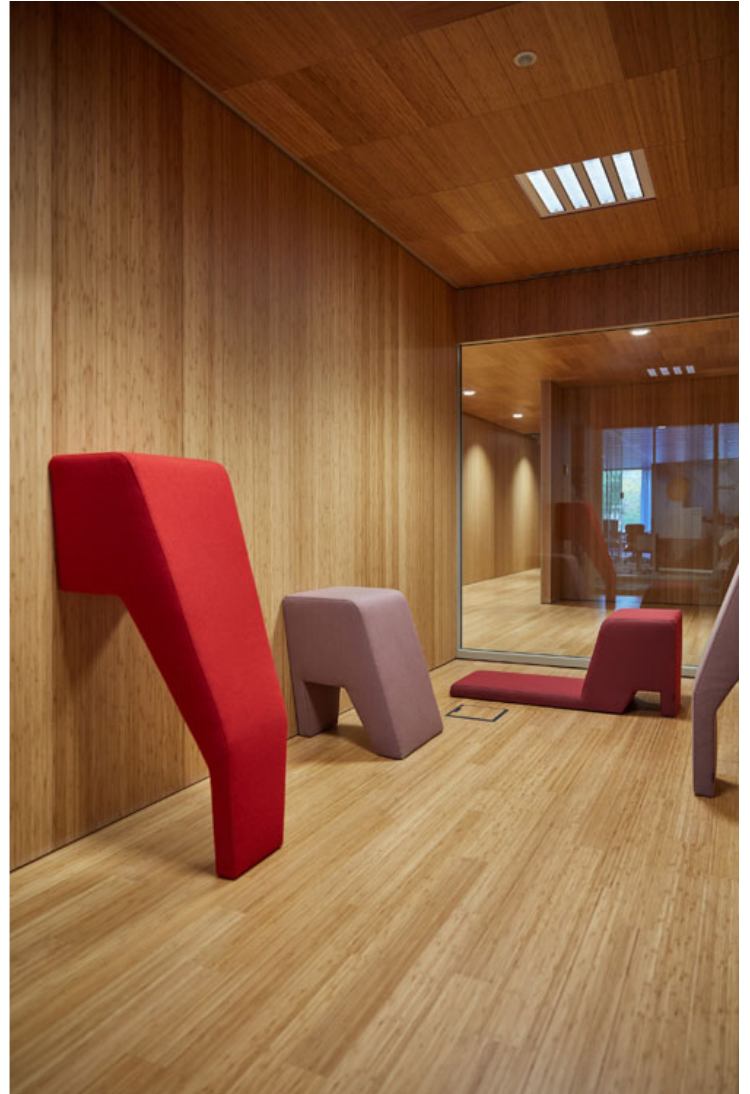


ISSN : 2575-5374

urbanNext Lexicon

Brightlands Smart Service
<https://urbannext.net/brightlands-smart-service/>

ISSN : 2575-5374



The interior design connects places and people

Van Eijk & Van der Lubbe designed the interior of the community floor. A raster of slanting lines forms the basis for a pattern of coloured carpet on the floor. The lamps and furniture also find their place along these diagonals, sometimes right through walls or glass partitions. This way, the pattern makes a connection between the spaces and the visitors. The colour grading creates different

urbanNext Lexicon

Brightlands Smart Service

<https://urbannext.net/brightlands-smart-service/>

atmospheres. There is a lot of red in the Forum, the warm heart of the building. Furniture hanging from pulleys should enable an informal and flexible use of the central space in the future. When needed, you can pull down a chair or table and just as easily pull it up again.

"By adding a contrary movement - the slanting lines in our design - to the linear building, we create dynamism. This way, we connect the spaces and also the people in the building."

ISSN : 2575-5374

urbanNext Lexicon

Brightlands Smart Service
<https://urbannext.net/brightlands-smart-service/>

ISSN : 2575-5374