

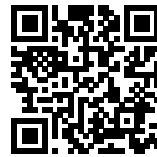


ARCHITIZER featured project

Kevin Daly Architects
Bi(h)OME

BI(H)OME

Posted on September 7, 2016 by urbanNext



Categories: [Architizer](#), [Energy and sustainability](#), [Kevin Daly Architects](#), [No Density](#), [Project](#), [Senseable Technologies](#), [Technology and fabrication](#)

Tags: [Architecture&design](#), [Architecture&environment](#), [Art&technology](#), [Built environment](#), [Ecological agencies](#), [Ecological researches](#), [Environmental technologies](#), [Experimental buildings](#), [Experimental Fabrications](#), [Experimental housing](#), [low cost](#), [Low impact](#), [Modular housing](#), [Prefabrication](#), [Project](#), [Sustainable construction](#), [Sustainable Development](#), [Technological Approach](#), [Urban Paradigms](#)

urbanNext Lexicon

Bi(h)OME

<https://urbannext.net/bihome/>

The Backyard Bi(h)OME is an ultra-modern, lightweight accessory dwelling unit that has the potential to meet Los Angeles Mayor Eric Garcetti's call for 100,000 new housing units by 2021.

ISSN : 2575-5374

urbanNext Lexicon

Bi(h)OME

<https://urbannext.net/bihome/>



ISSN : 2575-5374

urbanNext Lexicon

Bi(h)OME

<https://urbannext.net/bihome/>

The BI(h)OME demonstrates – in its design, fabrication, occupation, and recycling – what sustainability means at a personal level. The BI(h)OME was initiated by UCLA's CityLAB and designed by Kevin Daly Architects.

The low-cost, low-impact BI(H)OME could serve as housing for an elderly parent, a returning college graduate, or as a rental unit. It is easy to install, requiring no sewer hookup and just a hose for water supply, and easy to remove. It is almost entirely recyclable. Rather than requiring a mortgage, it could be leased, like a car, so it is semi-permanent, can flexibly serve the needs of homeowners for as long as they want, and then be recycled or reinstalled.



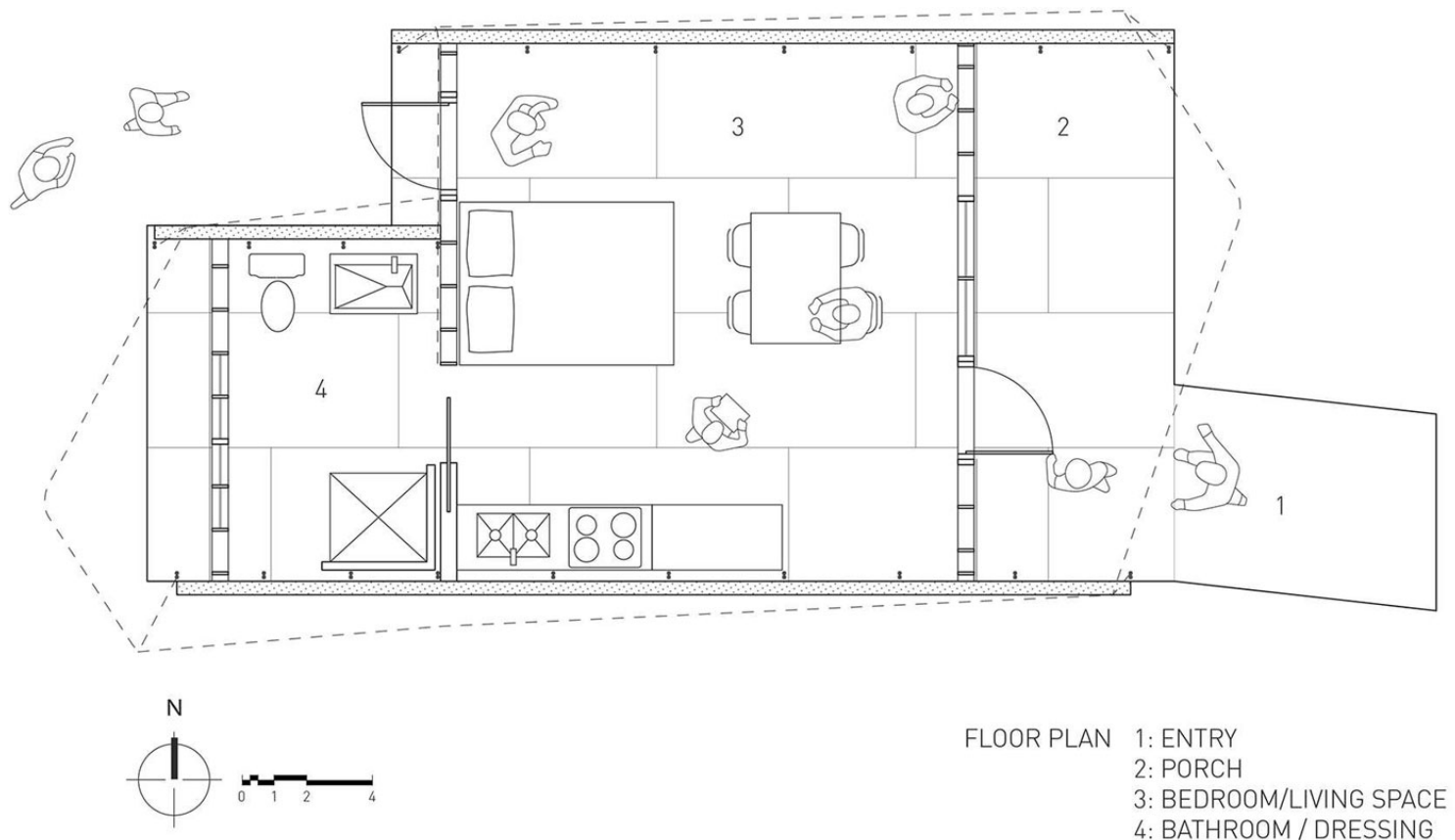
ISSN : 2575-5374

urbanNext Lexicon

Bi(h)OME

<https://urbannext.net/bihome/>

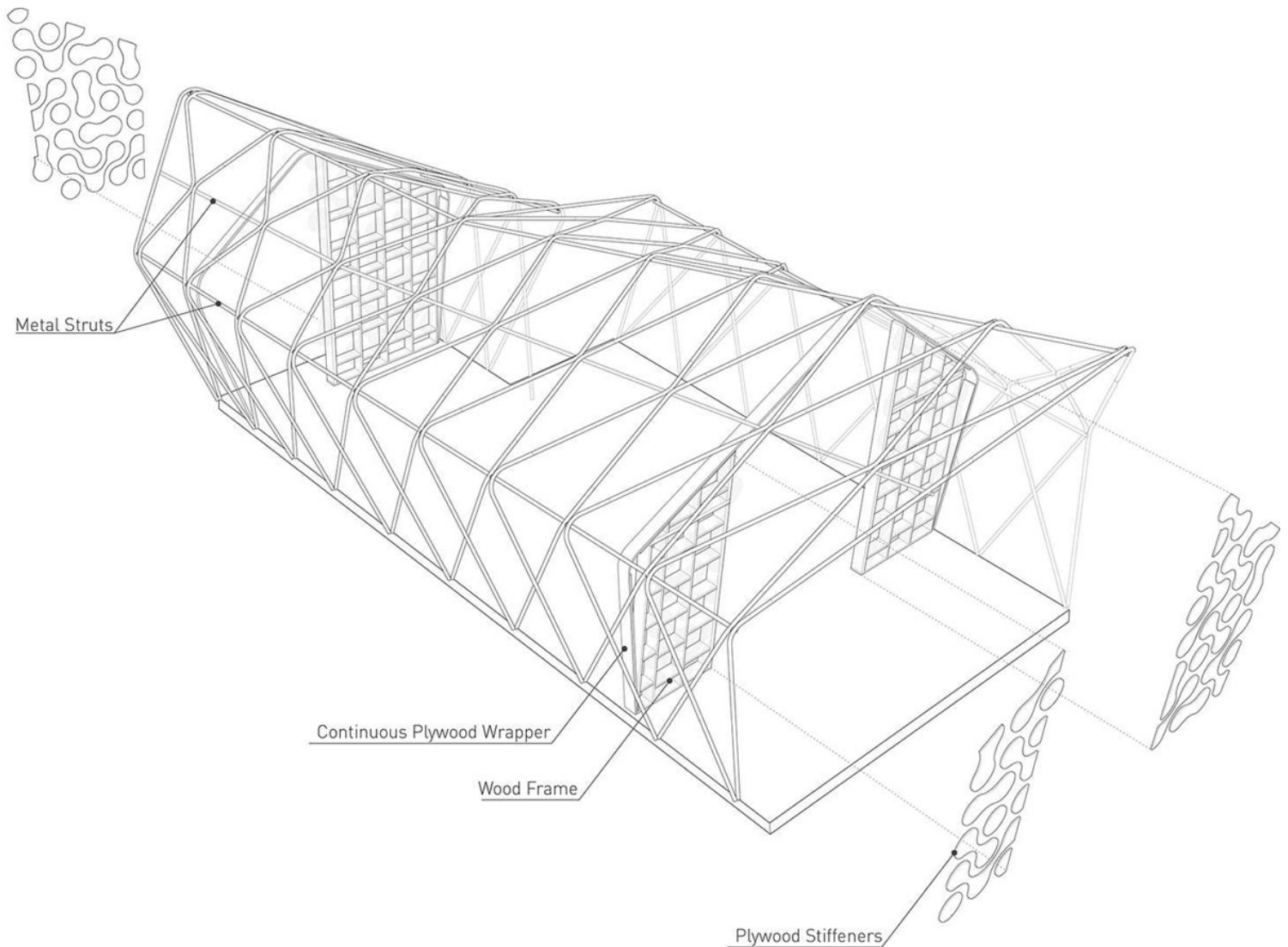
The environmental impact of the structure over its entire life cycle is between 10 and 100 times less than a conventional auxiliary dwelling. Each 500-square-foot backyard home contains a bedroom, living room, kitchen/dining room, and bathroom. The floor is mounted on a temporary low rock wall and posts that are screwed into the ground, so it does not require a foundation.



Plan

The structure is covered with an innovative translucent skin consisting of two layers of ETFE, a tough Teflon plastic, vacuum-sealed around a paper honeycomb, creating a remarkably solid yet light structure. Modular units contain the bathroom, shower, a closet, kitchen sink and counter.

ISSN : 2575-5374



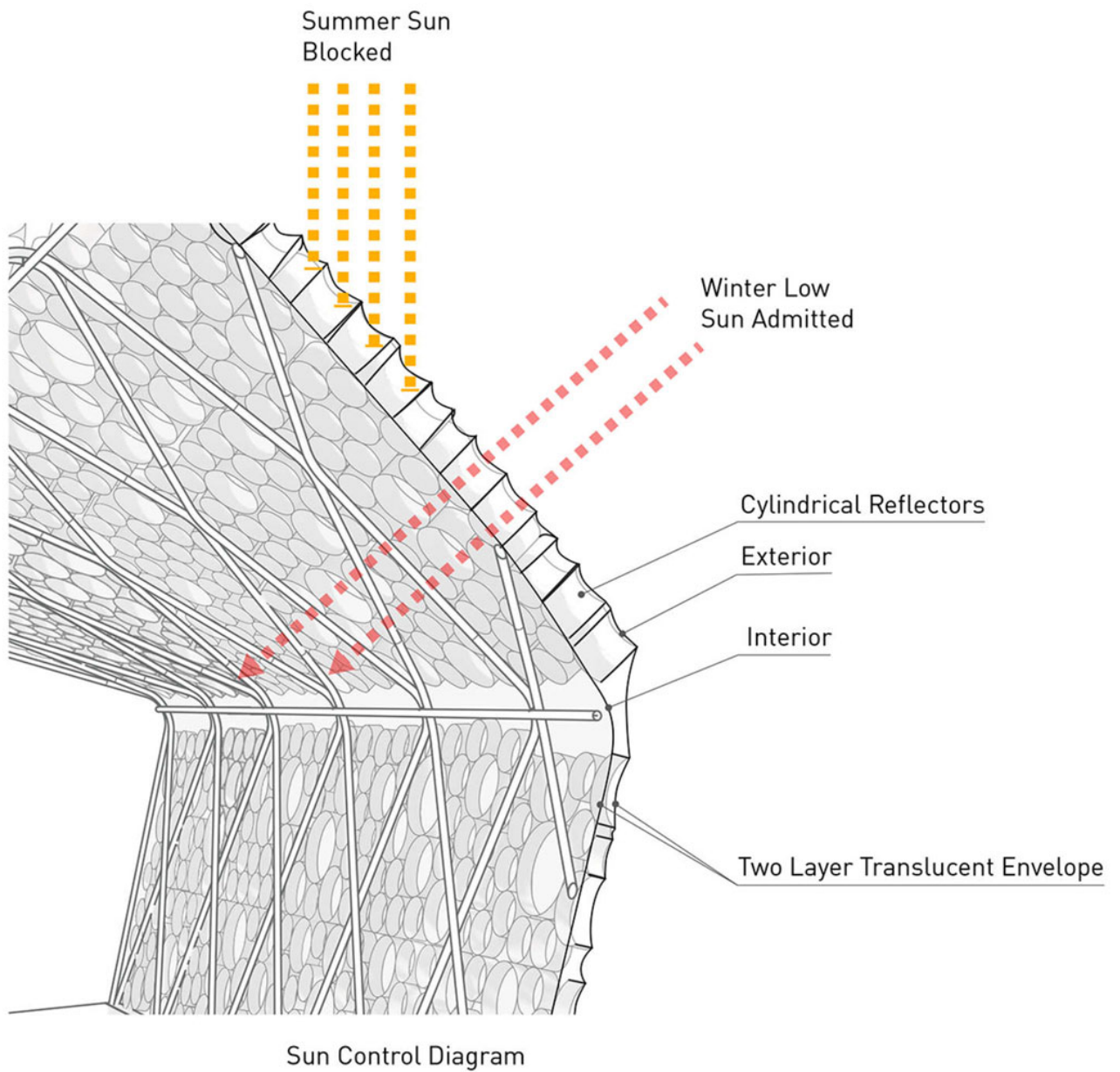
Structural Components

The structure can be configured in different ways to fit any backyard and to catch the sun on photovoltaic cells that can be printed on the outside layer of the BI(H)OME's skin, while LED lights can be built into the inner layer.

urbanNext Lexicon

Bi(h)OME

<https://urbannext.net/bihome/>



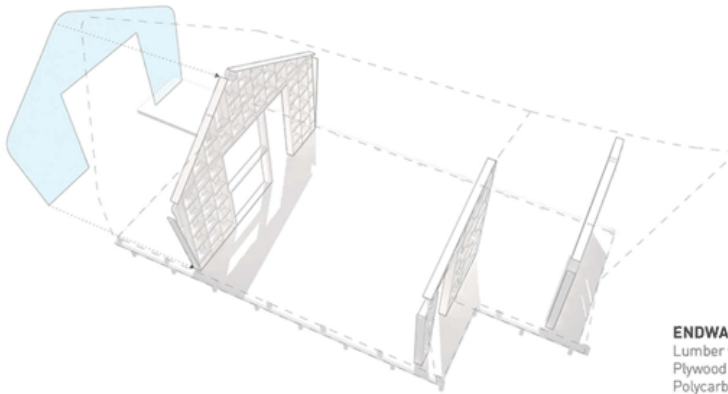
ISSN : 2575-5374

Detail

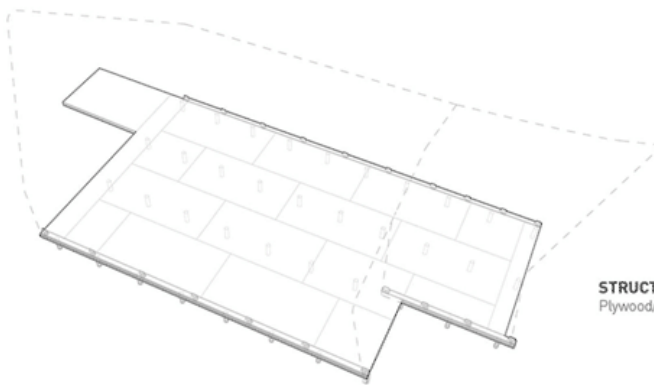
urbanNext Lexicon

Bi(h)OME

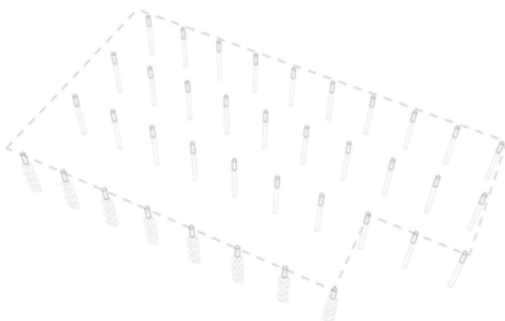
<https://urbannext.net/bihome/>



ENDWALL PANELS:
Lumber with waterjet cut
Plywood stiffeners
Polycarbonate skin



STRUCTURAL INSULATED FLOOR:
Plywood/Insulation/Plywood



GROUND WORK:
Removeable screw jacks with auger
footing.

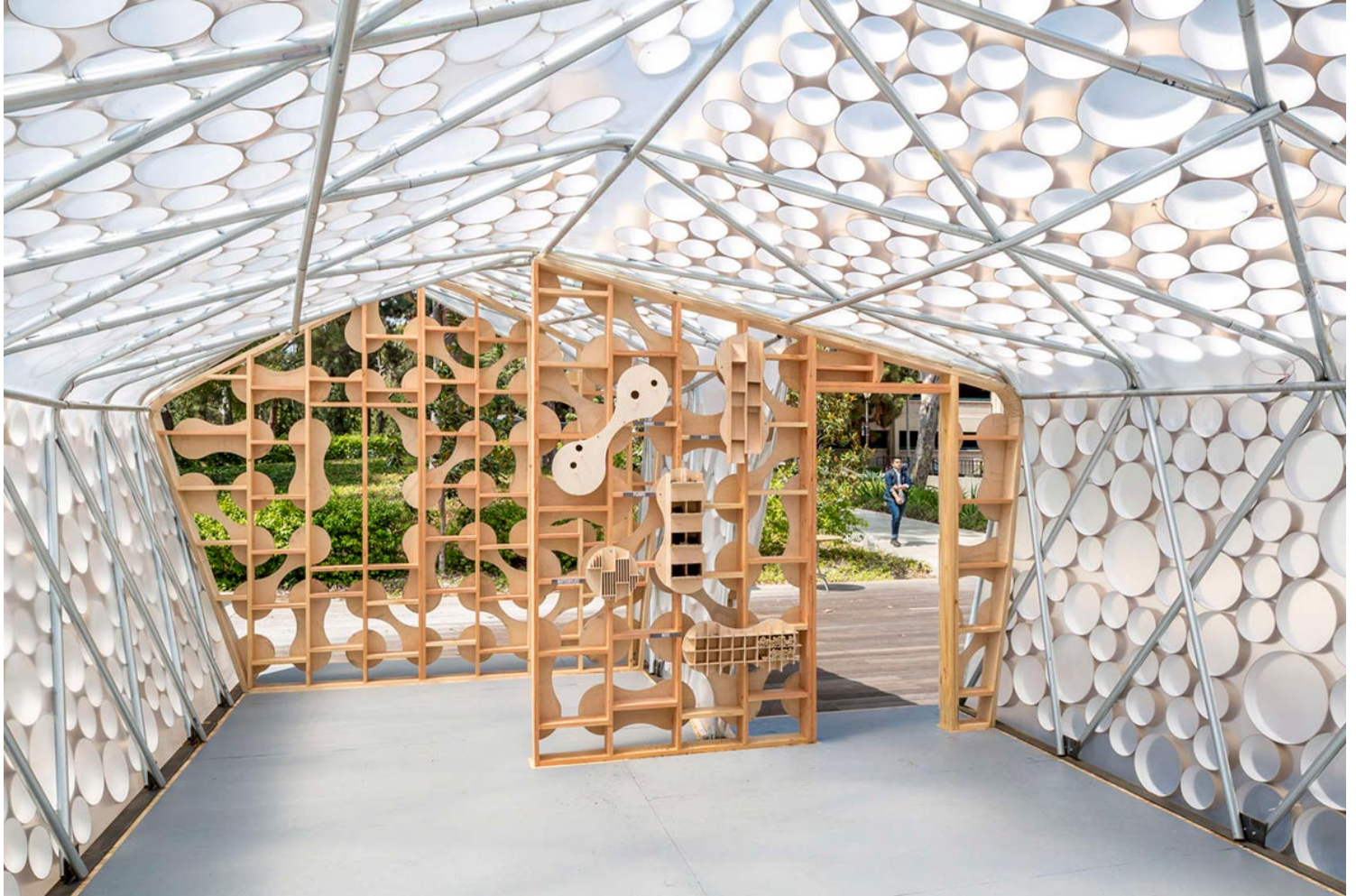
ISSN : 2575-5374

urbanNext Lexicon

Bi(h)OME

<https://urbannext.net/bihome/>

Diagrams



ISSN : 2575-5374

urbanNext Lexicon

Bi(h)OME

<https://urbannext.net/bihome/>



ISSN : 2575-5374

urbanNext Lexicon

Bi(h)OME
<https://urbannext.net/bihome/>

ISSN : 2575-5374

urbanNext Lexicon

Bi(h)OME
<https://urbannext.net/bihome/>

ISSN : 2575-5374