



BIBLIOTHÈQUE DU BOISÉ

Posted on February 4, 2016 by Urban UrbanNext



Categories: [Energy and sustainability](#), [Lemay](#), [Middle Density](#), [Project](#)

Tags: [Building](#), [Canada](#), [Culture](#), [Energetic Approach](#), [Facilities](#), [Institutional Architecture](#), [Landscape Architecture](#), [Library](#), [Montreal](#), [Multifunctional building](#), [Museum](#), [Natural dialogue](#), [Nature](#), [Project](#), [Public buildings](#), [Sustainability](#), [Sustainable construction](#), [Sustainable Development](#), [Topography](#)

urbanNext Lexicon

Bibliothèque du Boisé

<https://urbannext.net/bibliotheque-du-boise/>

The Bibliothèque du Boisé aims to become a place fostering a feeling of belonging, promoting exploration and discovery. Located between Thimens Boulevard and the Marcel-Laurin Park, it covers a surface area of 5,000 m² and is integrated into the site by drawing on its major elements.



ISSN : 2575-5374

urbanNext Lexicon

Bibliothèque du Boisé
<https://urbannext.net/bibliotheque-du-boise/>



ISSN : 2575-5374



This isn't a project about architecture alone: it's also about landscape. As such, this certified LEED Platinum building connects the city with the surrounding landscape, and serves as a point of connection that allows users to explore its site—inside and outside, from Boulevard Thimens as well as from the park. Visitors will discover the building by approaching it from a variety of spaces both intimate and dramatic, spaces that, by offering a variety of access pathways, set the stage for the site as well as for its users

urbanNext Lexicon

Bibliothèque du Boisé

<https://urbannext.net/bibliotheque-du-boise/>

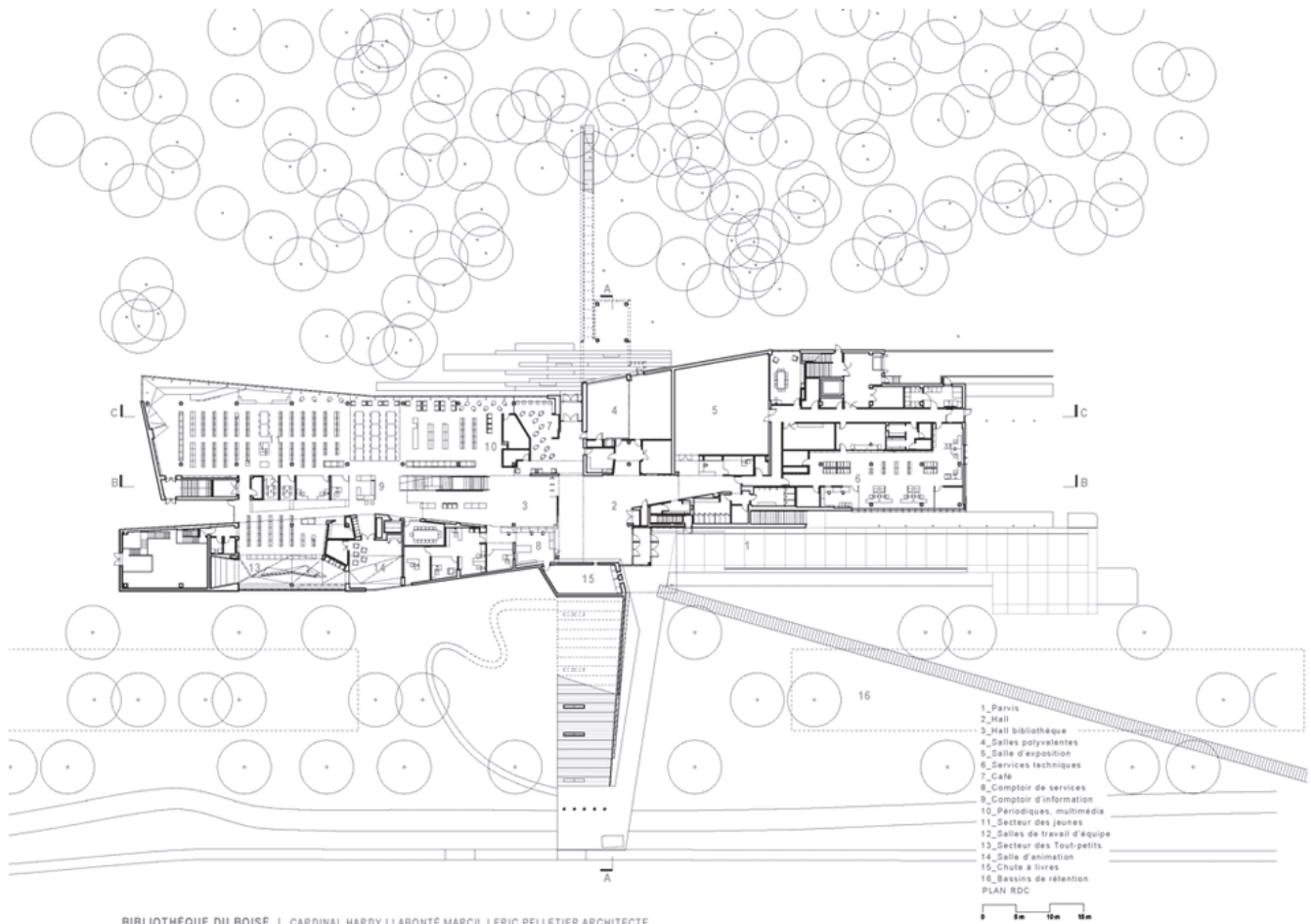


In this project, architecture is landscape and landscape is architecture. The architecture changes shape, unfolds, spreads out and rises up, reducing the boundaries between the built space and the site. There are several means of access to the building - all of which encourage interaction and discovery. Therefore, the library is not an architectural gesture, but rather an act of communication and exchange. It gives to the collectivity the opportunity to get together and know each other.

ISSN : 2575-5374

urbanNext Lexicon

Bibliothèque du Boisé
<https://urbannext.net/bibliotheque-du-boise/>

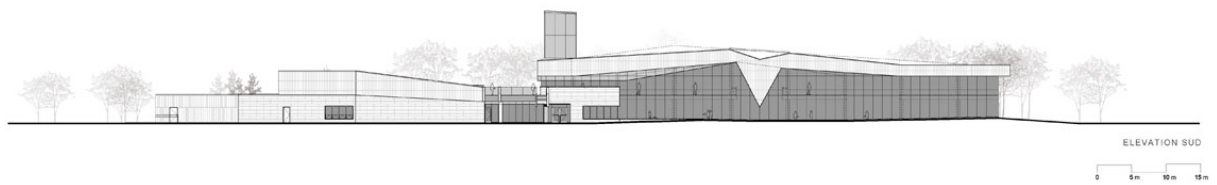
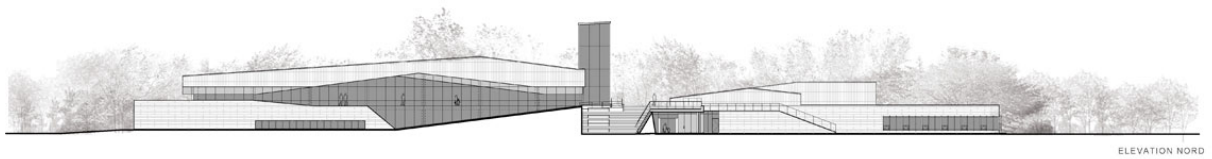


Plans

ISSN : 2575-5374

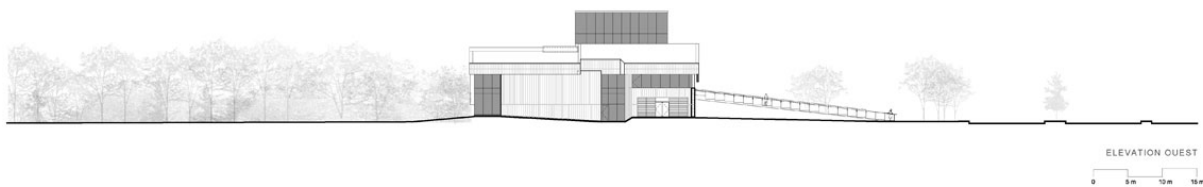
urbanNext Lexicon

Bibliothèque du Boisé
<https://urbannext.net/bibliotheque-du-boise/>



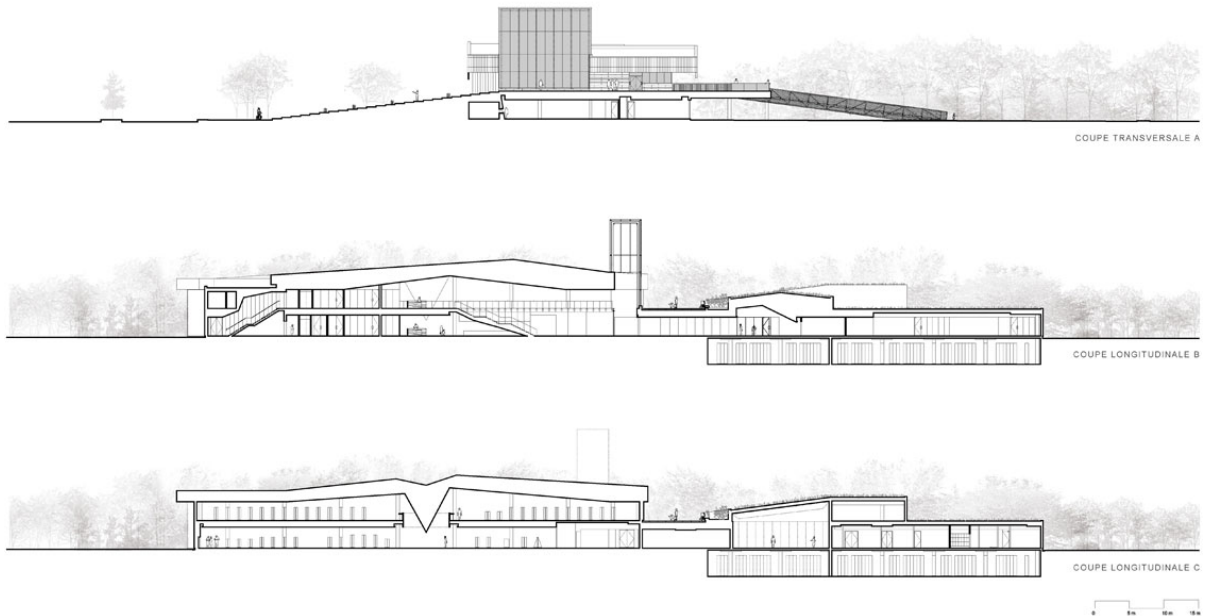
BIBLIOTHÈQUE DU BOISÉ | CARDINAL HARDY | LABONTÉ MARCIL | ERIC PELLETIER ARCHITECTE

ISSN : 2575-5374



BIBLIOTHÈQUE DU BOISÉ | CARDINAL HARDY | LABONTÉ MARCIL | ERIC PELLETIER ARCHITECTE

Elevations



BIBLIOTHÈQUE DU BOISÉ | CARDINAL HARDY | LABONTÉ MARCIL | ERIC PELLETIER ARCHITECTE

Sections

urbanNext Lexicon

Bibliothèque du Boisé
<https://urbannext.net/bibliotheque-du-boise/>



ISSN : 2575-5374

urbanNext Lexicon

Bibliothèque du Boisé
<https://urbannext.net/bibliotheque-du-boise/>



Far from a monumental approach, the library is integrated into a natural and urban context, it adds richness to the site, helps to define the space and offers a simple and universal reading. True reflection of the human condition, of the fate of a changing landscape, of its architecture, the Bibliothèque du Boisé created a significant identity hub as well as a rich, dynamic and open space where boundaries are redefined to foster discovery, learning, and a sense of belonging for the entire community.

ISSN : 2575-5374

urbanNext Lexicon

Bibliothèque du Boisé
<https://urbannext.net/bibliotheque-du-boise/>



ISSN : 2575-5374

urbanNext Lexicon

Bibliothèque du Boisé
<https://urbannext.net/bibliotheque-du-boise/>



ISSN : 2575-5374

urbanNext Lexicon

Bibliothèque du Boisé
<https://urbannext.net/bibliotheque-du-boise/>



ISSN : 2575-5374

urbanNext Lexicon

Bibliothèque du Boisé
<https://urbannext.net/bibliotheque-du-boise/>

ISSN : 2575-5374