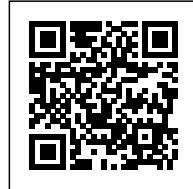




AESCHI SCHOOL

Posted on July 30, 2024 by Gabriel Sastre



Categories: [Energy and sustainability](#), [Haller Gut](#), [No Density](#), [Project](#)

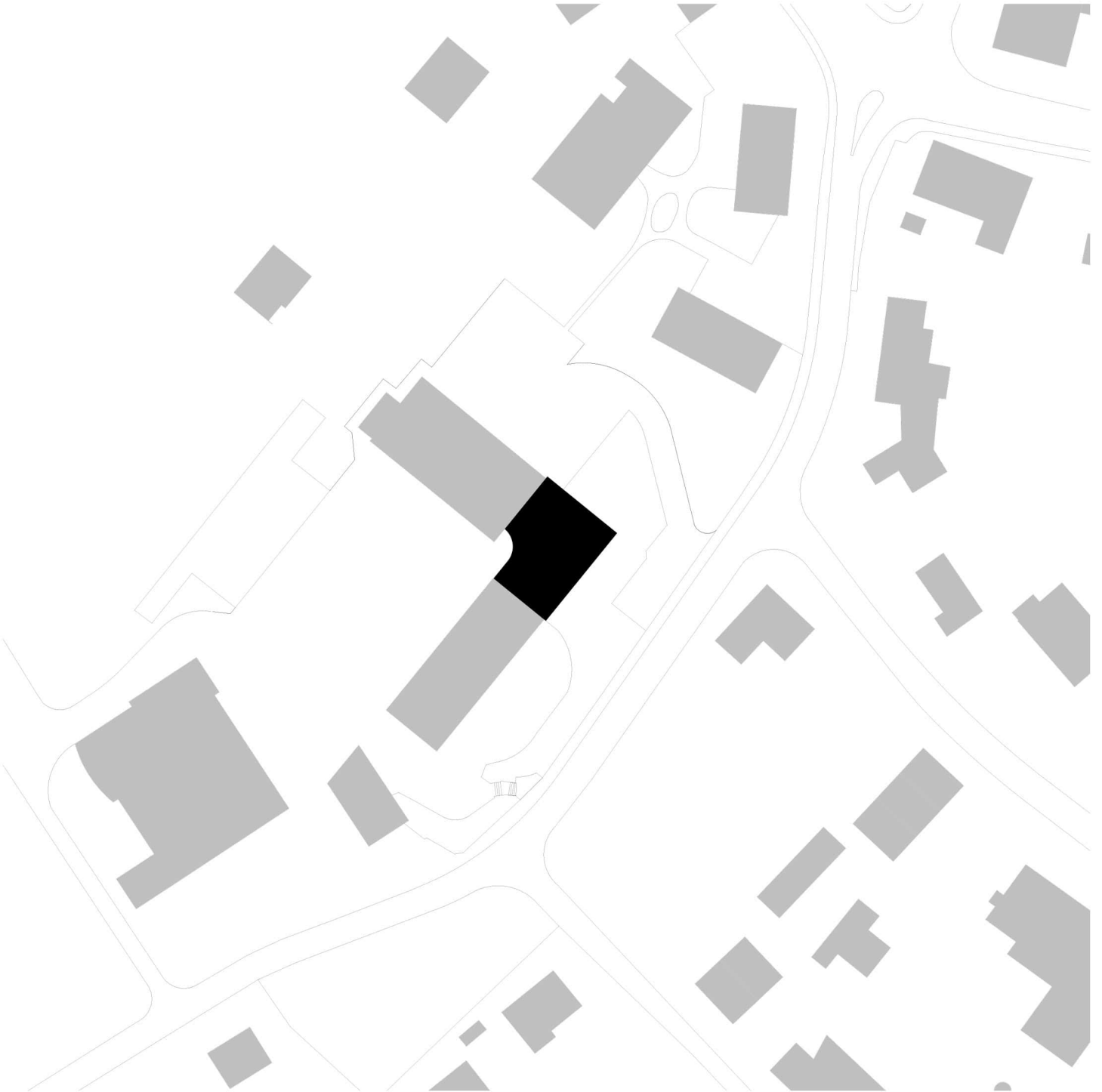
Tags: [Architecture](#), [Housing](#), [Infrastructure](#), [Project](#), [Transformation](#)

Our task was to create additional classrooms and group rooms for the school complex as well as rooms for the municipal administration. The existing complex consisted of 4 detached buildings from different decades. The small new building closes the gap between the existing school building and the work yard with classrooms on the upper floor.

urbanNext Lexicon

Aeschi School

<https://urbannext.net/aeschi-school/>



ISSN : 2575-5374

urbanNext Lexicon

Aeschi School

<https://urbannext.net/aeschi-school/>



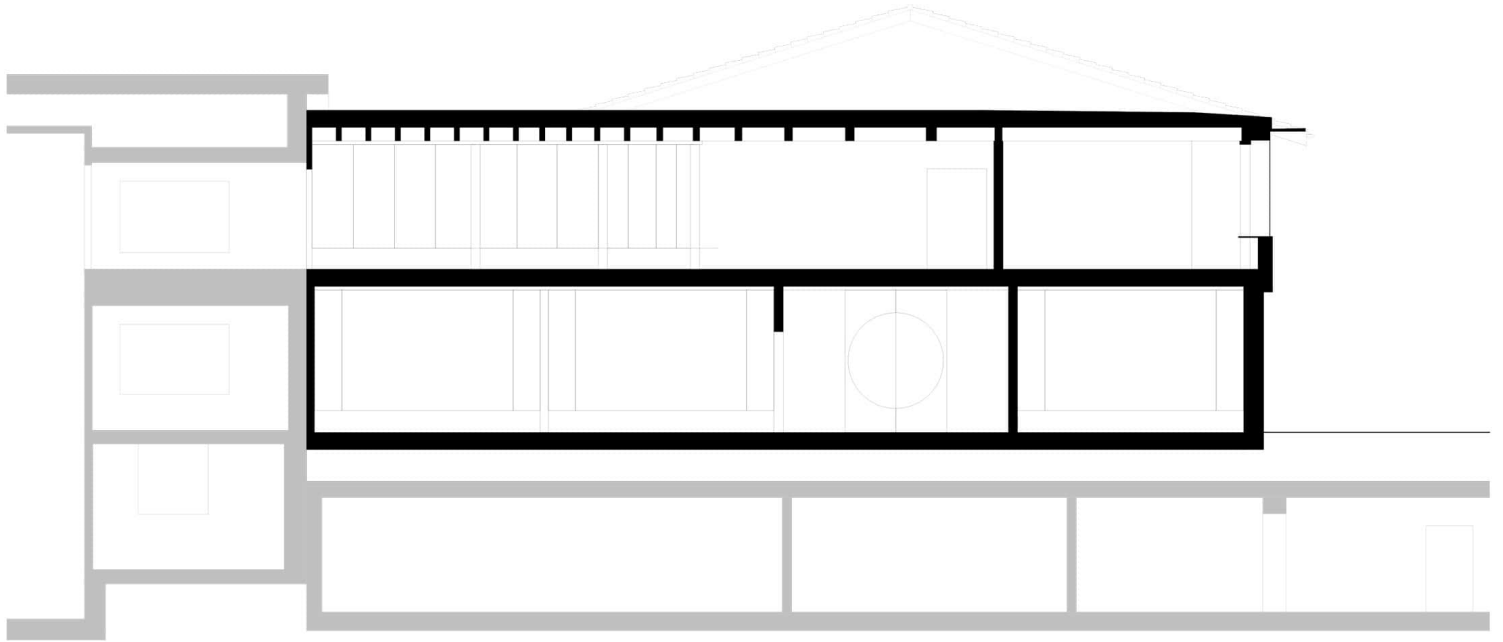
ISSN : 2575-5374

urbanNext Lexicon

Aeschi School

<https://urbannext.net/aeschi-school/>

This approach connects the 2 existing buildings and creates a coherent school building on the inside. In addition, all 3 buildings could be connected with just one lift on all floors without thresholds. In addition to the school use on the upper floor, the ground floor of the new building houses the municipal administration.



ISSN : 2575-5374

urbanNext Lexicon

Aeschi School

<https://urbannext.net/aeschi-school/>



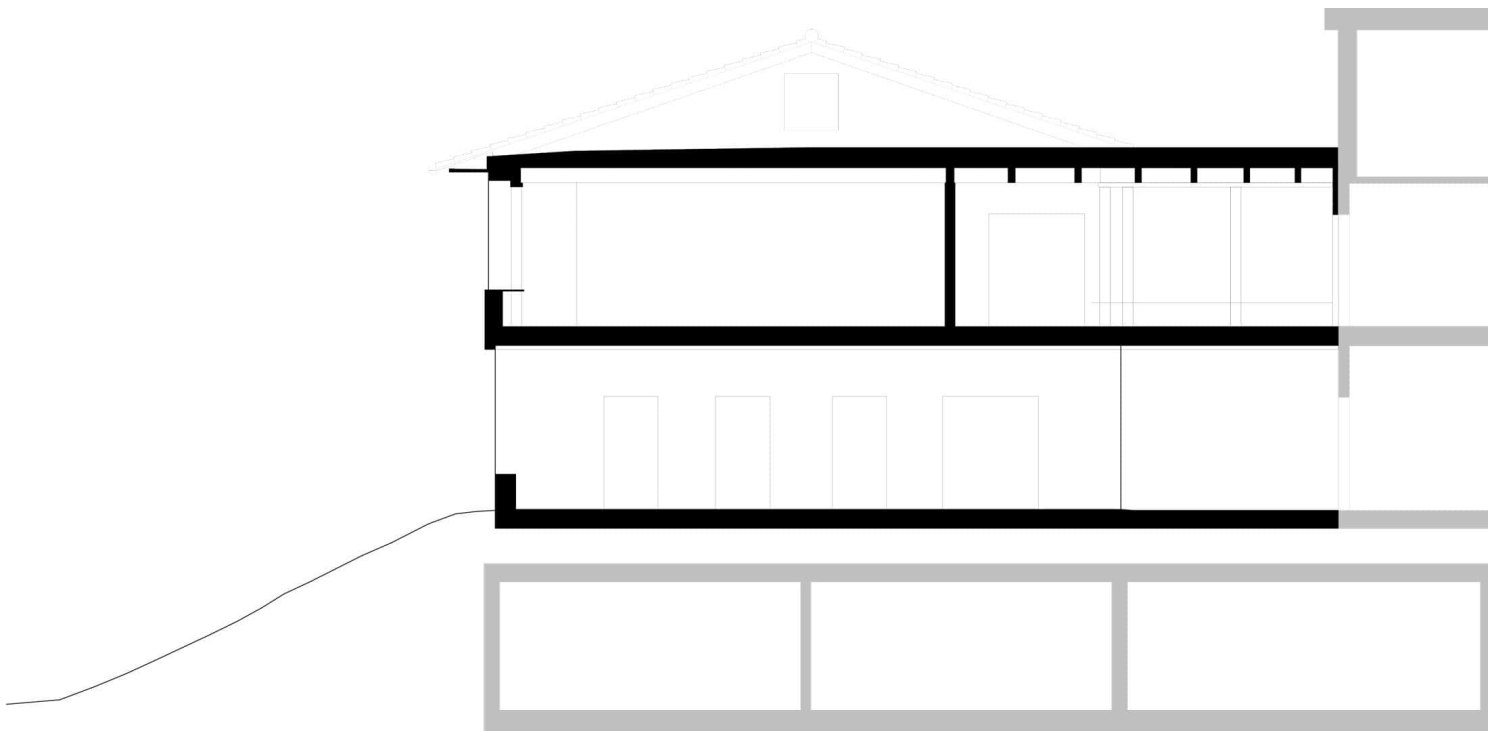
ISSN : 2575-5374

urbanNext Lexicon

Aeschi School

<https://urbannext.net/aeschi-school/>

The small new building therefore has to fulfil many tasks and yet should close the gap in the existing building as naturally as possible. On the ground floor, the new building is set back from the work yard and creates a passageway to the schoolyard as well as covered access to the administration. On the upper floor, the corridors of the two existing buildings will be connected with a circular façade in the access area.



ISSN : 2575-5374

urbanNext Lexicon

Aeschi School

<https://urbannext.net/aeschi-school/>



This newly created space will be used both for teaching and as a cloakroom. The classrooms and group rooms are all arranged along the façade and connected to each other with floor-to-ceiling doors. The setback on the ground floor and the stacking are evident in the façade.

ISSN : 2575-5374

urbanNext Lexicon

Aeschi School

<https://urbannext.net/aeschi-school/>



ISSN : 2575-5374

urbanNext Lexicon

Aeschi School

<https://urbannext.net/aeschi-school/>



The upper floor protrudes slightly and has smaller windows and a more compartmentalised structure. The façade is deliberately kept thin and almost looks like paper. The new building is a mixed construction with concrete slabs, exposed brickwork and the exposed round wooden columns and wooden beam ceilings.

ISSN : 2575-5374

urbanNext Lexicon

Aeschi School

<https://urbannext.net/aeschi-school/>



ISSN : 2575-5374

In the interiors, the concrete and brickwork are shown very directly and are harmonised and slightly refined by means of colour. The wooden supporting structure of the roof creates a warm atmosphere in the classrooms and accommodates the lights in the spaces in between. Individual elements such as cupboards, coat hooks and the windows are treated with different colours, deliberately contrasting with the white walls and the wooden structure.

urbanNext Lexicon

Aeschi School

<https://urbannext.net/aeschi-school/>



ISSN : 2575-5374

The ribbon-like windows in the classrooms on the upper floor allow a view into the distance. On the ground floor, individual very large windows with closed ventilation sashes were installed in the municipal administration, which frame the view and allow plenty of daylight into the workrooms.

urbanNext Lexicon

Aeschi School

<https://urbannext.net/aeschi-school/>



ISSN : 2575-5374

urbanNext Lexicon

Aeschi School

<https://urbannext.net/aeschi-school/>

ISSN : 2575-5374

urbanNext Lexicon

Aeschi School
<https://urbannext.net/aeschi-school/>

ISSN : 2575-5374